

QuWireless 4422 Sector

QuWireless 4422 Sector is a multi-band X-pol sector antenna for LTE and 5G sector coverage, operating in 690-960 MHz, 1695-2700 MHz and 3300-4200 MHz bands.

QuWireless 4422 Sector is a multi-band X-pol sector antenna for LTE and 5G sector coverage, operating in 690-960 MHz, 1695-2700 MHz and 3300-4200 MHz bands. With gain up to 12.6 dBi, VSWR < 1.8, front-to-back ratio > 25 dB and connector isolation > 25 dB, it delivers reliable performance for mobile networks, private wireless systems and high-capacity deployments. DC grounded design and directional coverage make it a strong choice for professional telecom installations.



OUTDOOR ANTENNA WORKS IN ANY WEATHER CONDITIONS, IP67



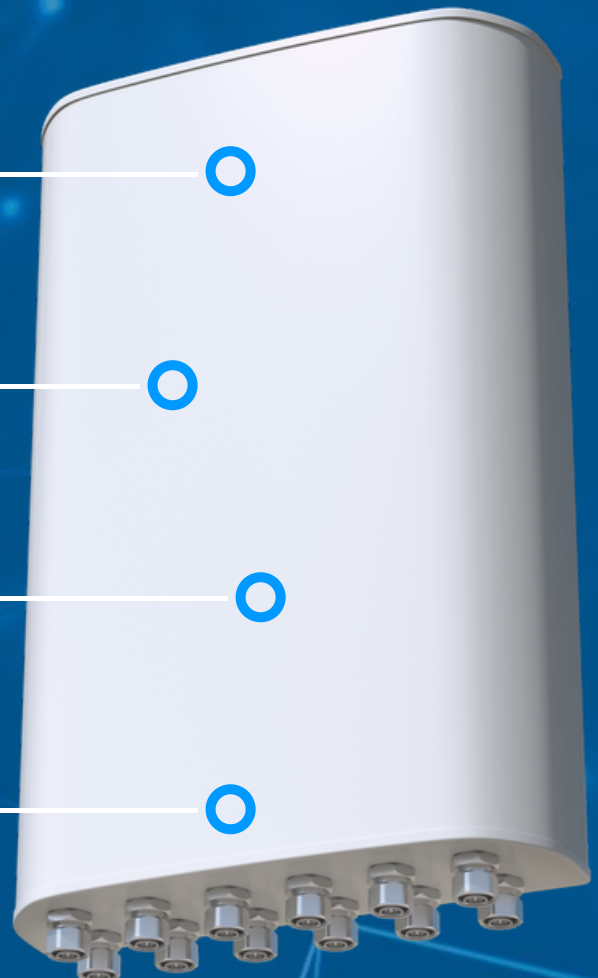
FREQUENCY BAND: 690 - 4200 MHZ



HIGH GAIN: 12 DBI



MADE IN EUROPE



ANTENNA SPECIFICATION

FREQUENCY	690-960 MHz 1695-2700 MHz 3300- 4200 MHz
GAIN	690-960 MHz: 8.3 dBi 1695-2700 MHz: 12.2 dBi 3300- 4200 MHz: 12.6 dBi
VSWR	< 1.80
BEAMWIDTH	690-960 MHz 75°/65° ± 5° 1695-2700 MHz 75°/30° ± 5° 3300- 4200 MHz 70°/30° ± 5°
POLARIZATION	X-pol
SEPARATION BETWEEN CONNECTORS	>25 dB
FRONT TO BACK	>25 dB
MAX INPUT POWER	50 W
DC GROUND	YES
IMPEDANCE	50 Ω

MECHANICAL SPECIFICATION

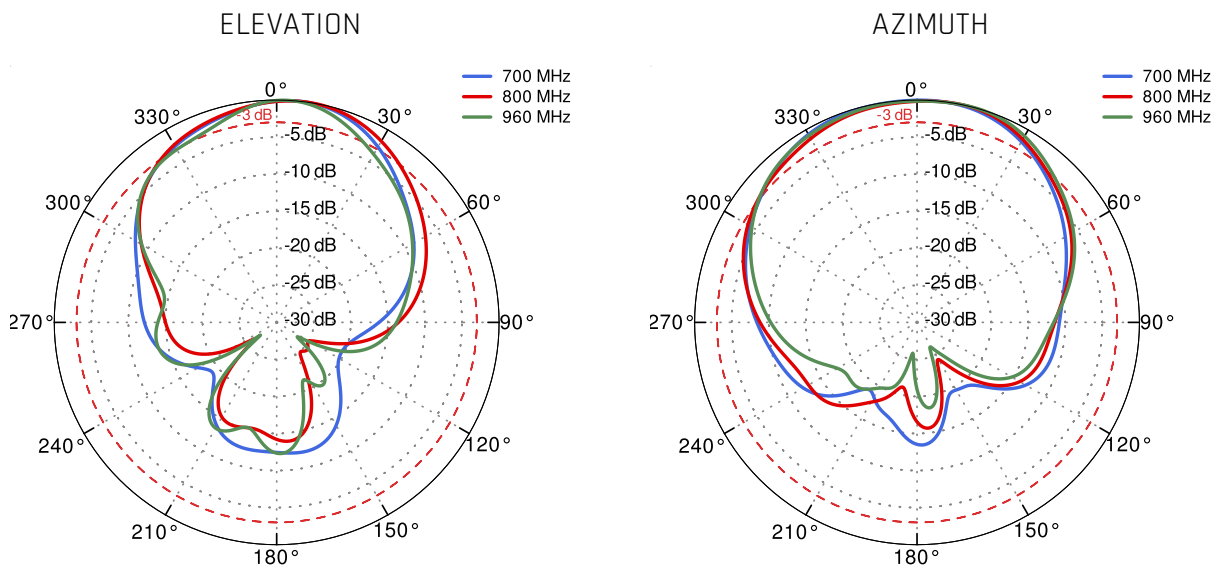
INGRESS PROTECTION	IP67
CONNECTOR TYPE	12x 4.3 RF
DIMENSIONS	320 x 95 x 500 mm
OPERATING TEMPERATURE	From -40°C to 75°C From -40°F to 167°F

COMPATIBLE ROUTERS

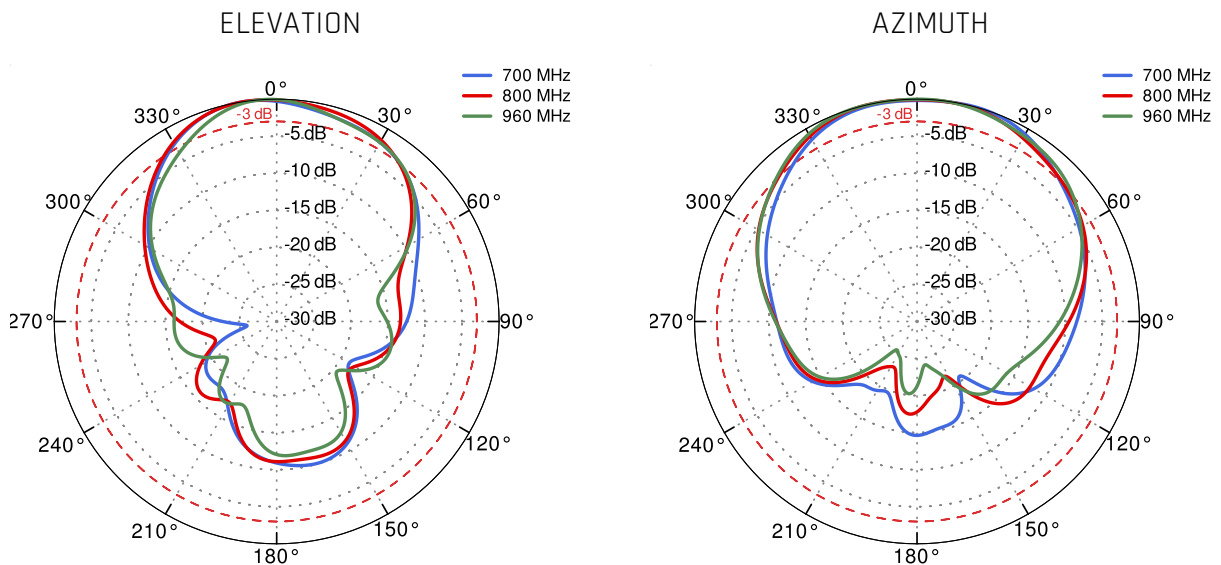
VARIANT: - _____

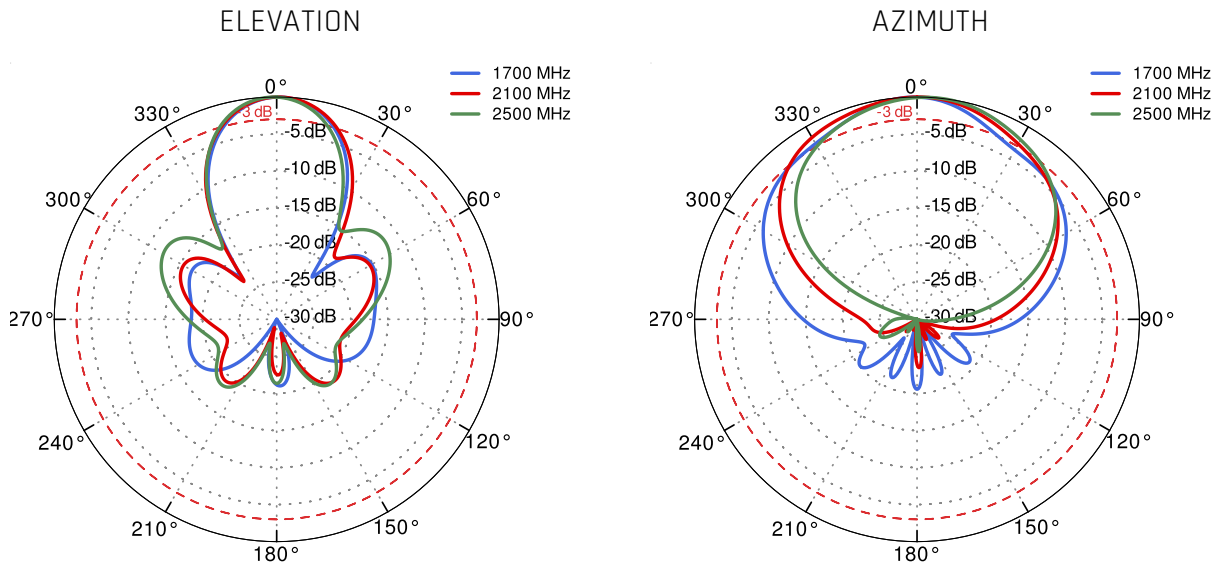
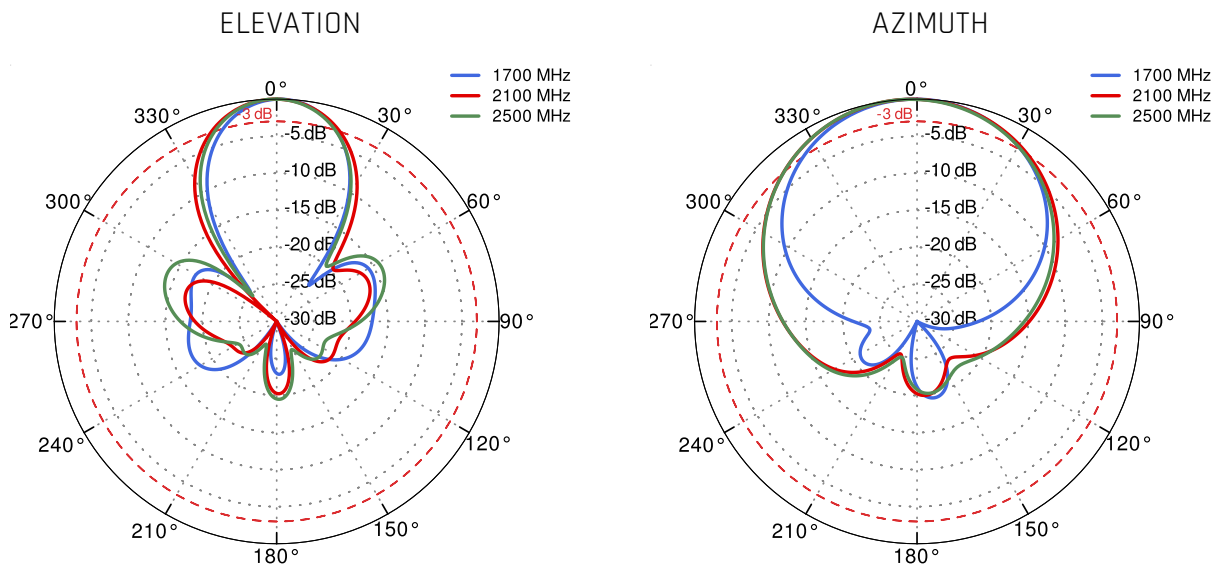
PLOTS

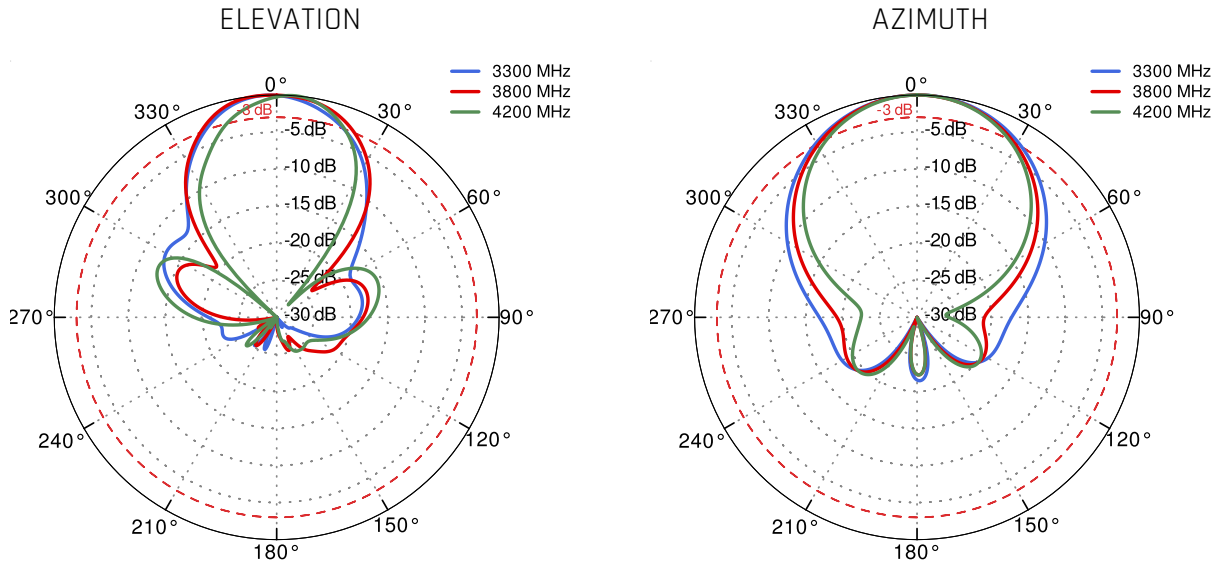
PORT 1&3 - from 700MHz to 960MHz



PORT 2&4 - from 700MHz to 960MHz



PORT 5&7 - from 1700MHz to 2500MHz

PORT 6&8 - from 1700MHz to 2500MHz


PORT 9&11 - from 3300MHz to 4200MHz

PORT 10&12 - from 3300MHz to 4200MHz
