

QuCube 5G/LTE MIMO 2x2 + GPS

INTEGRATED MULTI-BAND LTE & 5G OMNI ANTENNA + GPS ANTENNA + PLACE TO INSTALL ROUTERBOARD WITH MODEM

QuCube 2x2 Omnidirectional 5G Antenna is an ultra-wideband outdoor solution designed for LTE/5G/3G/2G 2x2 modems. Covering 600-6000 MHz, including the new Extended LTE Band 71, it delivers reliable performance across multiple frequency bands. A dedicated internal space allows integration of custom electronics.

Engineered for **outdoor and mobile** applications, **QuCube** is ideal for use in transportation systems, for underground connectivity or urban and public installations. It ensures consistent performance wherever dependable connectivity is essential. The included bracket enables secure mounting on **poles or walls**. The antenna is equipped with **MHF4 connectors** (There is no specific order for 5G/LTE cable connection).



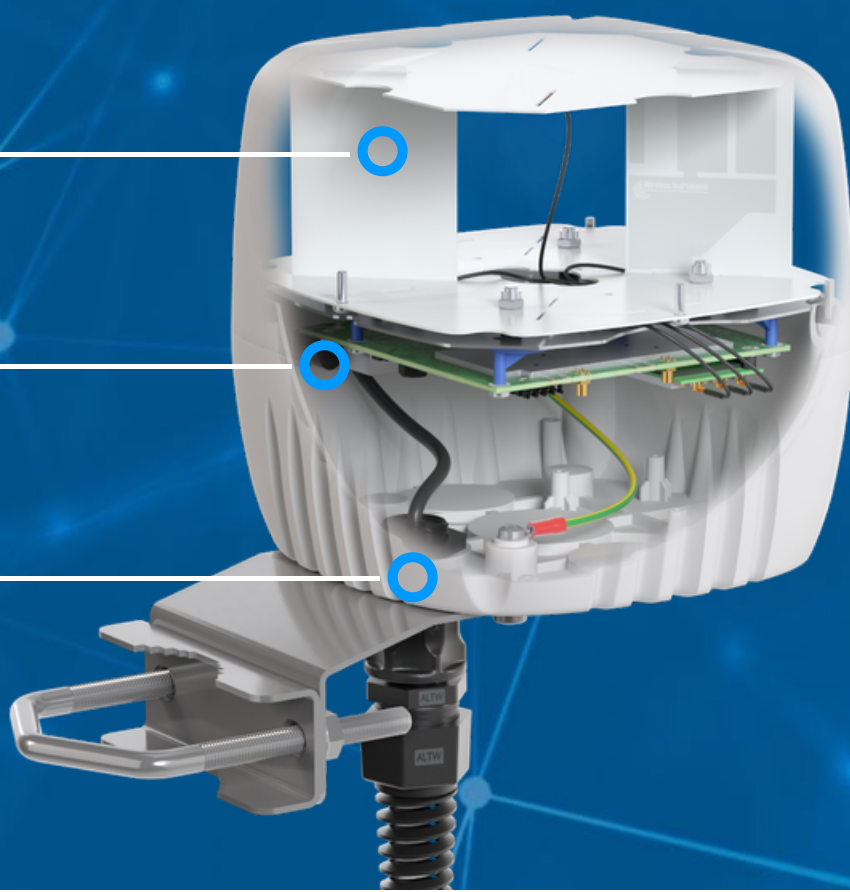
OUTDOOR ANTENNA WORKS IN **ANY WEATHER CONDITIONS**, IP68



GALVANIZED STEEL, WALL OR POLE MOUNTING BRACKET



MADE IN **EUROPE**



5G/LTE SPECIFICATION

FREQUENCY	617 - 960 MHz 1.7 - 2.7 GHz 3.3 - 6.0 GHz
GAIN	617 - 960 MHz : 2 dBi 1.7 - 2.7 GHz : 3 dBi 3.3 - 6.0 GHz : 4 dBi
SUPPORTED LTE BANDS	1, 2, 3, 4, 5, 7, 8, 9, 10, 12, 13, 14, 17, 18, 19, 20, 22, 25, 26, 27, 28, 29, 30, 33, 34, 35, 36, 37, 38, 39, 40, 41, 42, 43, 44, 46, 47, 48, 49, 52, 53, 65, 66, 67, 68, 69, 71, 85, 103, 106
SUPPORTED 5G BANDS	n1, n2, n3, n5, n7, n8, n12, n13, n14, n18, n20, n25, n26, n28, n29, n30, n34, n38, n39, n40, n41, n46, n47, n48, n53, n65, n66, n67, n71, n77, n78, n79, n80, n81, n82, n83, n84, n85, n86, n89, n90, n95, n97, n98, n100, n101, n256
VSWR	<1.20, max <2.50
BEAMWIDTH	360°/35° ±5°
POLARIZATION	Vertical
IMPEDANCE	50 Ω

MECHANICAL SPECIFICATION

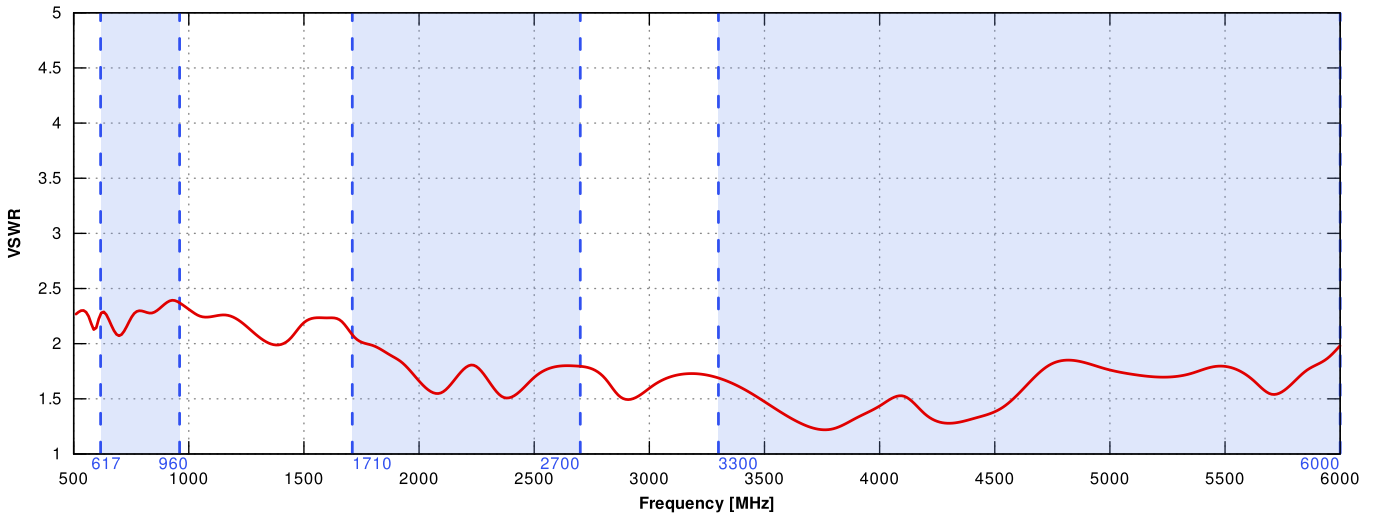
MATERIAL	ABS
CONNECTOR	MHF4
OUTER DIMENSIONS	160 x 160 x 155 mm 6.3 x 6.3 x 6.10 inch
WEIGHT	1.5 kg
OPERATING TEMPERATURE	-40°C to 80°C -40°F to 176°F
INGRESS PROTECTION	IP67 and IP68

MOUNTING KIT

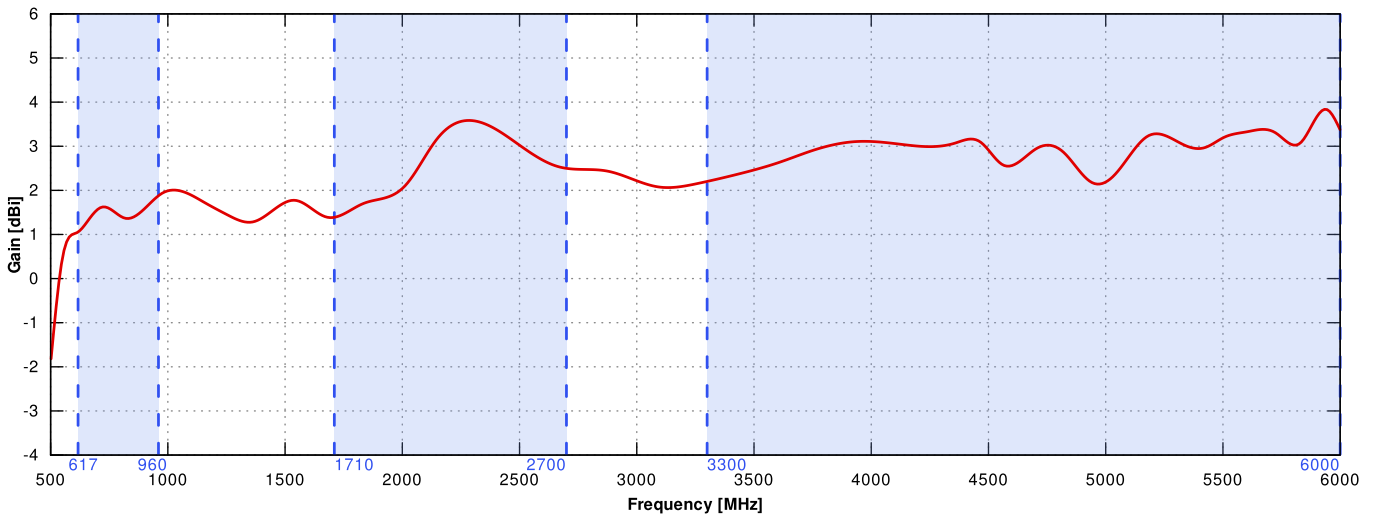
MATERIAL	Galvanized steel
WEIGHT	0.4kg
MOUNTING PLACE	Wall or mast
MAST DIAMETER	25-66 mm 0.98-2.60 inch

PLOTS

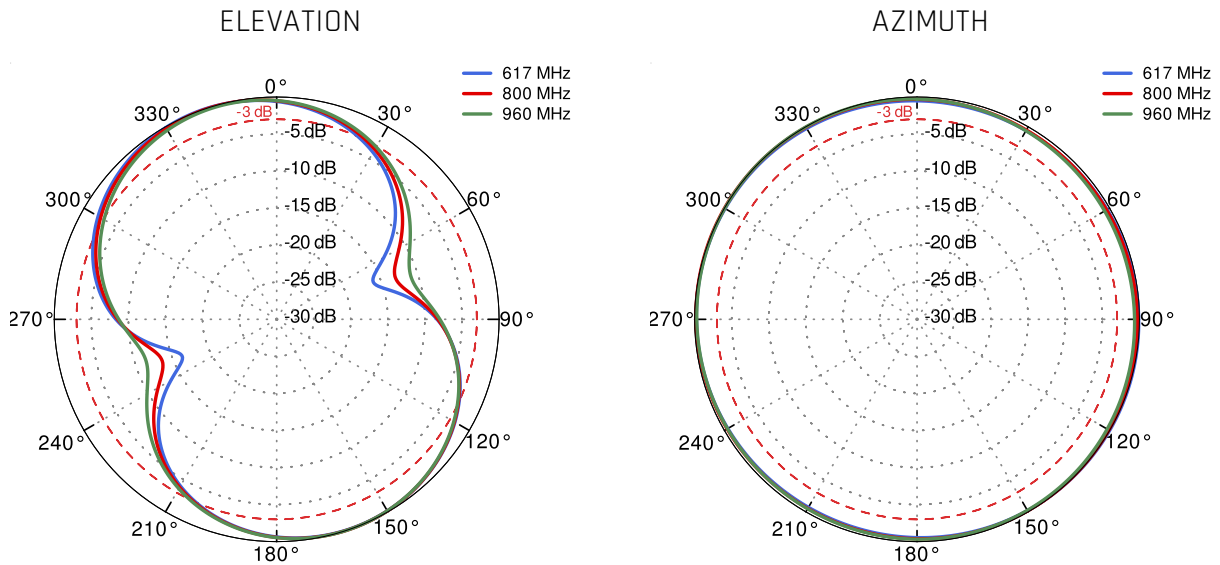
5G/LTE VSWR



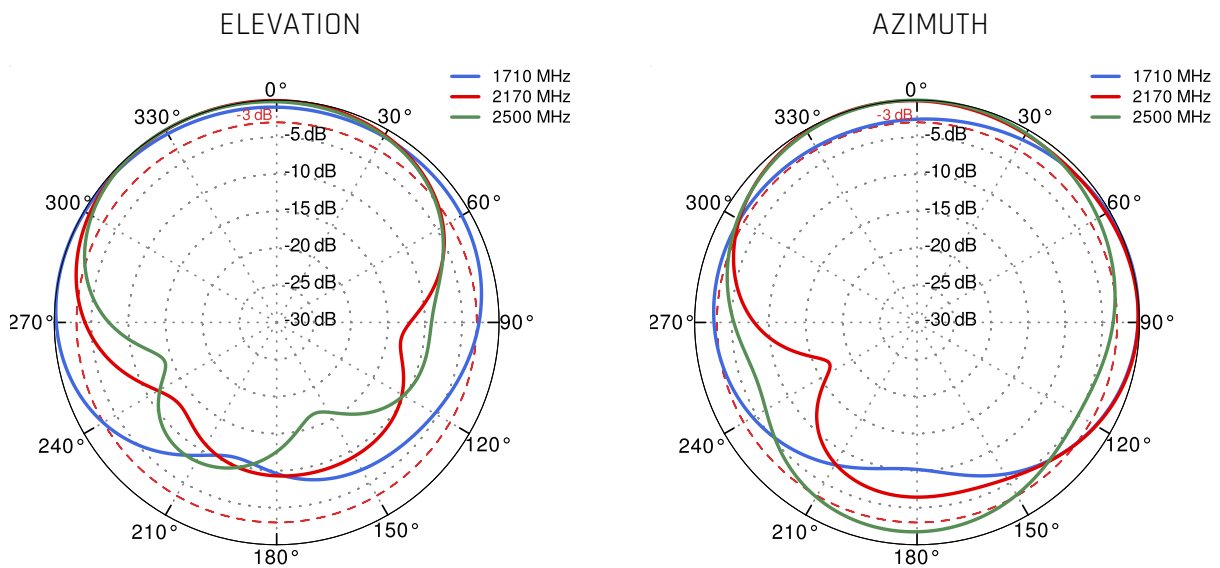
5G/LTE GAIN

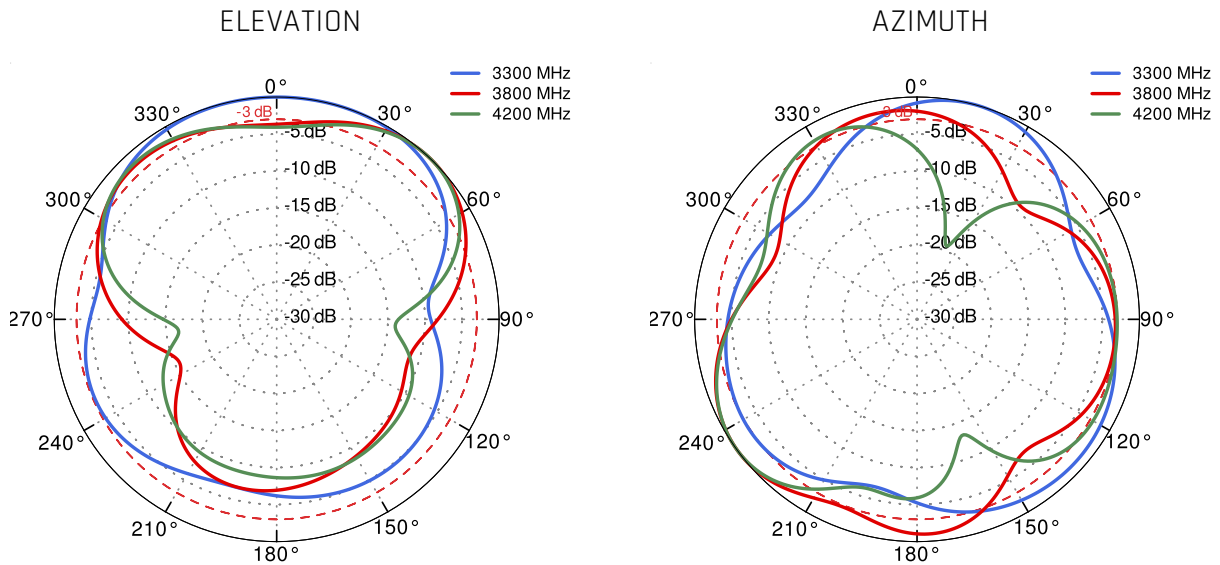
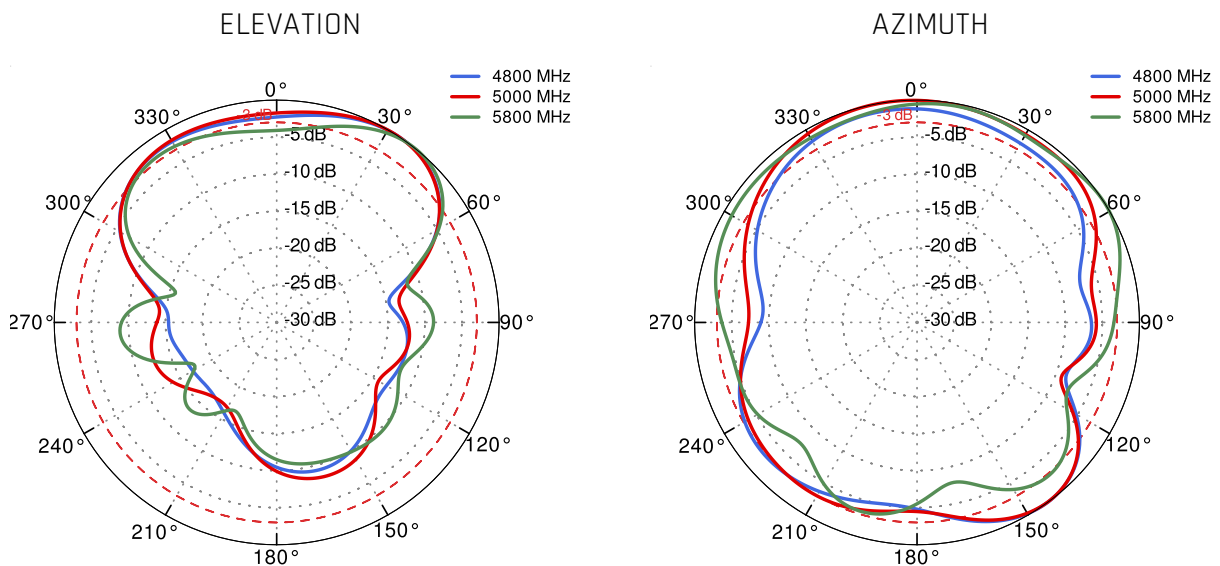


5G/LTE from 617MHz to 960MHz



5G/LTE from 1.71GHz to 2.7GHz



5G/LTE from 3.3GHz to 4.2GHz

5G/LTE from 4.8GHz to 5.8GHz


DIMENSIONS

