

# QuCube for Teltonika

**INTEGRATED MULTI-BAND 5G OMNI ANTENNA + WI-FI 6E OMNI ANTENNA + GPS ANTENNA + BLUETOOTH ANTENNA + PLACE TO INSTALL TELTONIKA (ALL-IN-ONE)**

**QuCube for Teltonika** is a perfect outdoor device for mobile and fixed installations like industrial, CCTV, hotspots, yachts, boats, campers, RV etc. It has embedded **omni 5G, omni Wi-Fi 6E, BT and GPS antenna**. If you use Teltonika router with QuCube antenna, you get an integrated complete solution with embedded router and multi band antennas in one enclosure.

Additional accessory: a [QuPoE splitter](#), allowing you to split data and power from a single Ethernet cable and maintain gigabit transfer speeds while protecting the LAN port from damage caused by overvoltage, short circuit or improper connection.



OUTDOOR ANTENNA WORKS IN ANY WEATHER CONDITIONS, IP68



ANTENNA PERFECTLY MATCHED WITH THE TELTONIKA ROUTERS



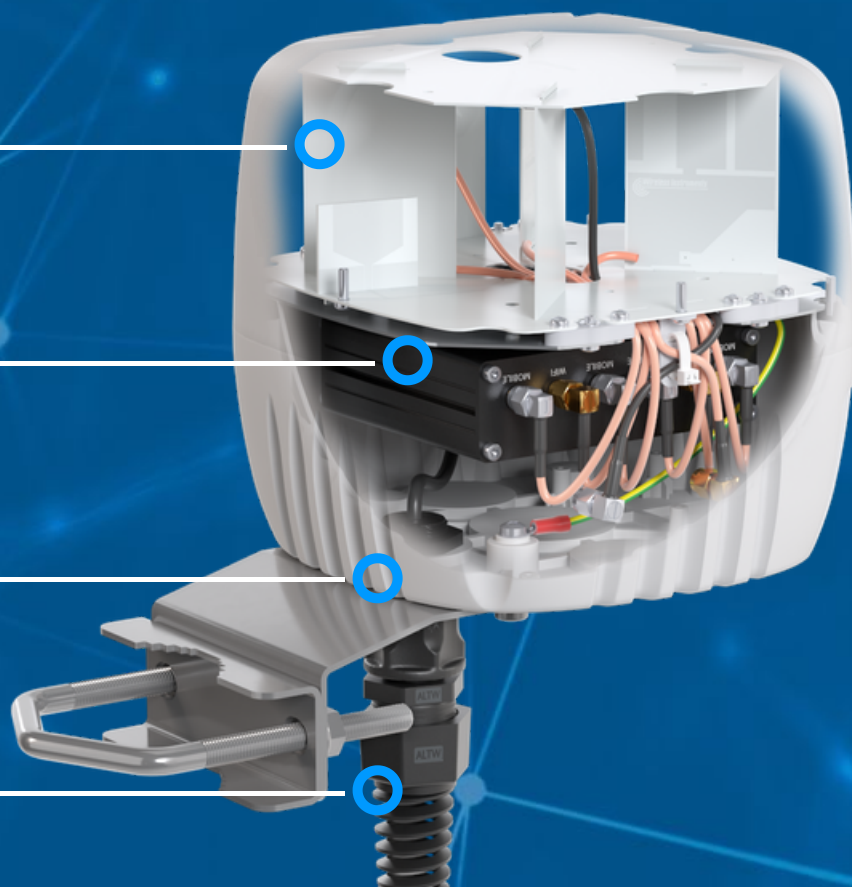
ALL ANTENNAS AND TELTONIKA ROUTER INTEGRATED IN ONE ENCLOSURE



GALVANIZED STEEL, WALL OR POLE MOUNTING BRACKET



MADE IN EUROPE



## 5G / LTE ANTENNA SPECIFICATION

<b>FREQUENCY</b>	617 - 960 MHz 1.7 - 2.7 GHz 3.3 - 6.0 GHz
<b>GAIN</b>	617 - 960 MHz : 2 dBi 1.7 - 2.7 GHz : 3 dBi 3.3 - 6.0 GHz : 4 dBi
<b>SUPPORTED LTE BANDS</b>	1, 2, 3, 4, 5, 7, 8, 9, 10, 12, 13, 14, 17, 18, 19, 20, 22, 25, 26, 27, 28, 29, 30, 33, 34, 35, 36, 37, 38, 39, 40, 41, 42, 43, 44, 46, 47, 48, 49, 52, 53, 65, 66, 67, 68, 69, 71, 85, 103, 106
<b>SUPPORTED 5G BANDS</b>	n1, n2, n3, n5, n7, n8, n12, n13, n14, n18, n20, n25, n26, n28, n29, n30, n34, n38, n39, n40, n41, n46, n47, n48, n53, n65, n66, n67, n71, n77, n78, n79, n80, n81, n82, n83, n84, n85, n86, n89, n90, n95, n97, n98, n100, n101, n256
<b>VSWR</b>	<1.20, max <2.50
<b>BEAMWIDTH</b>	360°/35° ±5°
<b>POLARIZATION</b>	Vertical
<b>IMPEDANCE</b>	50 Ω
<b>CONNECTOR</b>	4x SMA
<b>CABLE TYPE</b>	RG316

## **WI-FI ANTENNA SPECIFICATION**

<b>FREQUENCY</b>	2.4 - 2.5 GHz 5.0 - 7.2 GHz
<b>GAIN</b>	2.4 - 2.5 GHz: 2dBi 5 - 7.2 GHz: 5dBi
<b>VSWR</b>	< 2.50
<b>BEAMWIDTH</b>	360°/25°
<b>POLARIZATION</b>	Vertical
<b>IMPEDANCE</b>	50 Ω
<b>CONNECTOR</b>	2x RPSMA
<b>CABLE TYPE</b>	RG316

## **GPS ACTIVE ANTENNA SPECIFICATION**

<b>FREQUENCY</b>	1.56 - 1.61 GHz
<b>VSWR</b>	< 2
<b>GAIN</b>	3 dBi
<b>GAIN 3V</b>	28 dBi
<b>DC POWER INPUT</b>	2.5 V ~ 6.5 V
<b>POWER CONSUMPTION</b>	2.5 - 6.5 mA
<b>IMPEDANCE</b>	50 Ω
<b>POLARIZATION</b>	RHCP (right hand circularly polarized)

**CONNECTOR**

1x SMA

**CABLE TYPE**

RG174

 **MECHANICAL SPECIFICATION****MATERIALS**

ABS, aluminum, PTFE

**CONNECTOR TYPE**

1x QuRJ45

**OUTER DIMENSIONS**160 x 160 x 155 mm  
6.3 x 6.3 x 6.10 inch**INGRESS PROTECTION**

IP68

**OPERATING TEMPERATURE**From -40°C to 80°C  
From -40°F to 176°F**MAST DIAMETER**25-66 mm  
0.98-2.60 inch**ENCLOSURE RECOMMENDED  
TIGHTENING TORQUE**

0.5 - 0.7 Nm

## FREQUENCY BANDS

LTE / 4G

	1	2	3	4	5	7	8	
	9	10	12	13	14	17	18	
	19	20	22	25	26	27	28	
617 MHz	29	30	33	34	35	36	37	6000 MHz
	38	39	40	41	42	43	44	
	47	48	49	52	53	65	66	
	67	68	69	71	85	103	106	

5G

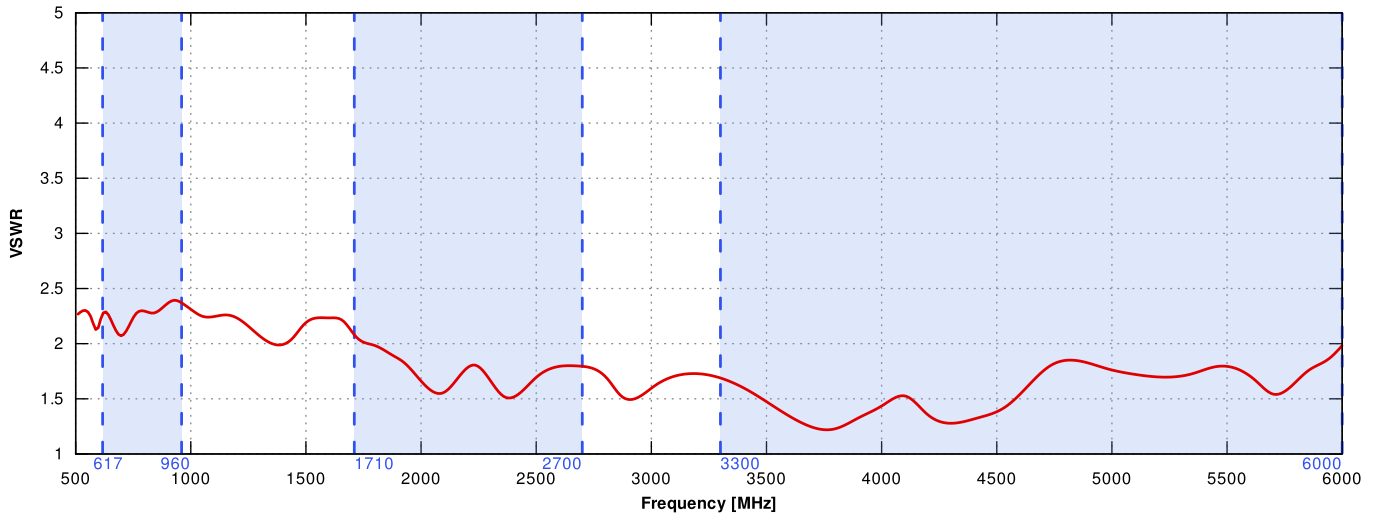
	n1	n2	n3	n5	n7	n8	n12	
	n13	n14	n18	n20	n25	n26	n28	
	n29	n30	n34	n38	n39	n40	n41	
617 MHz	n47	n48	n53	n65	n66	n67	n71	6000 MHz
	n77	n78	n80	n81	n82	n83	n84	
	n85	n86	n89	n90	n95	n97	n98	
	n100	n101	n256					

## COMPATIBLE ROUTERS

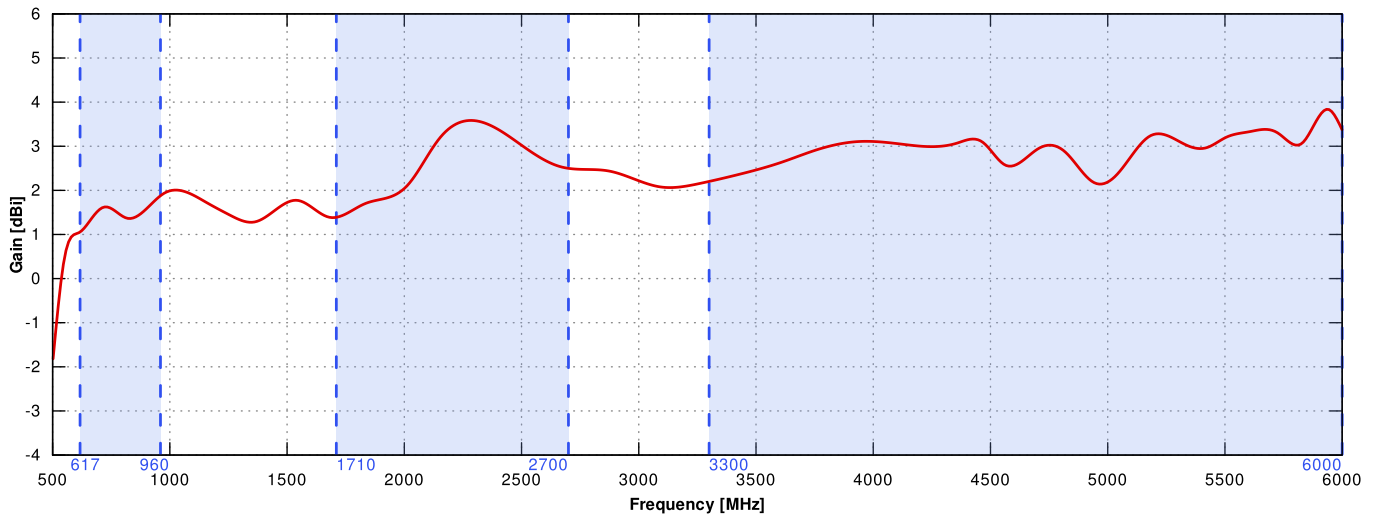
VARIANT: - \_\_\_\_\_

# PLOTS

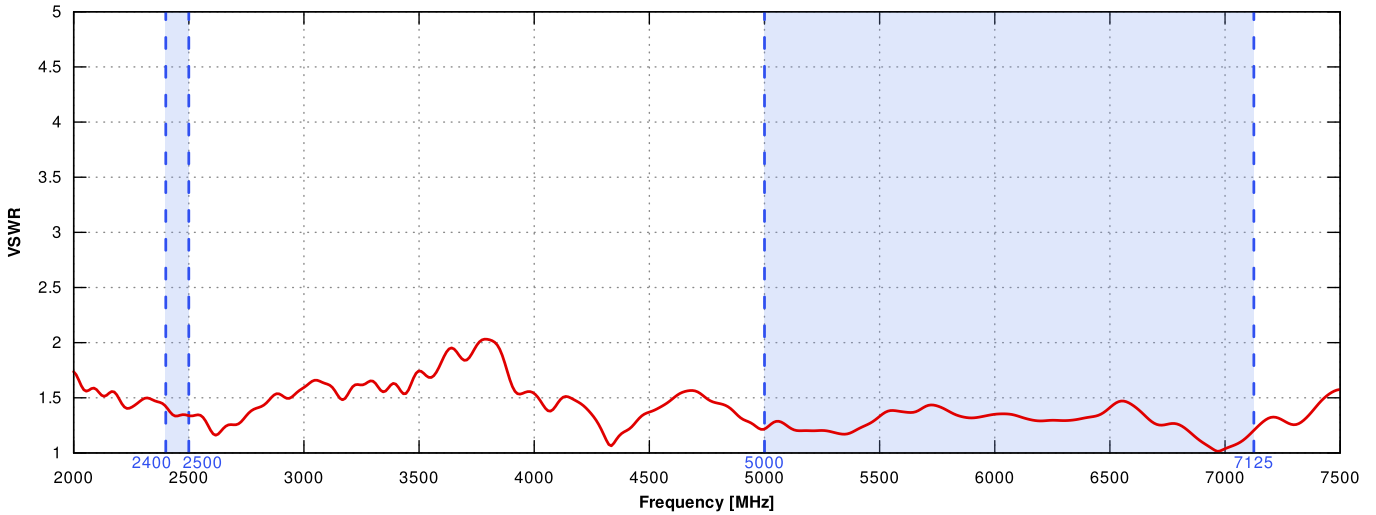
## 5G/LTE VSWR



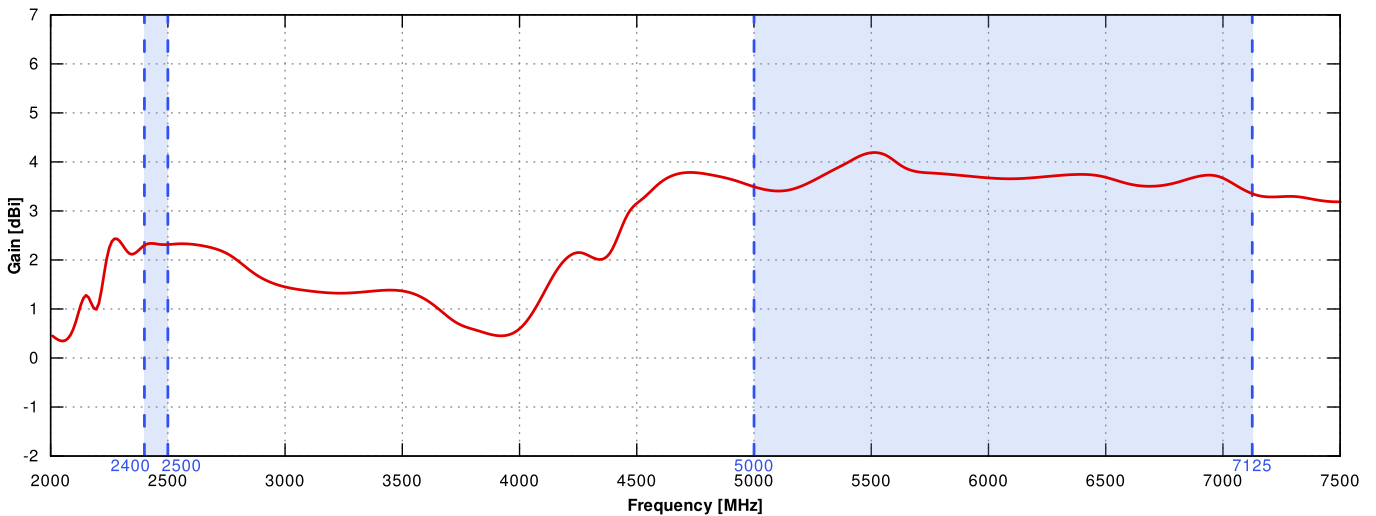
## 5G/LTE Gain



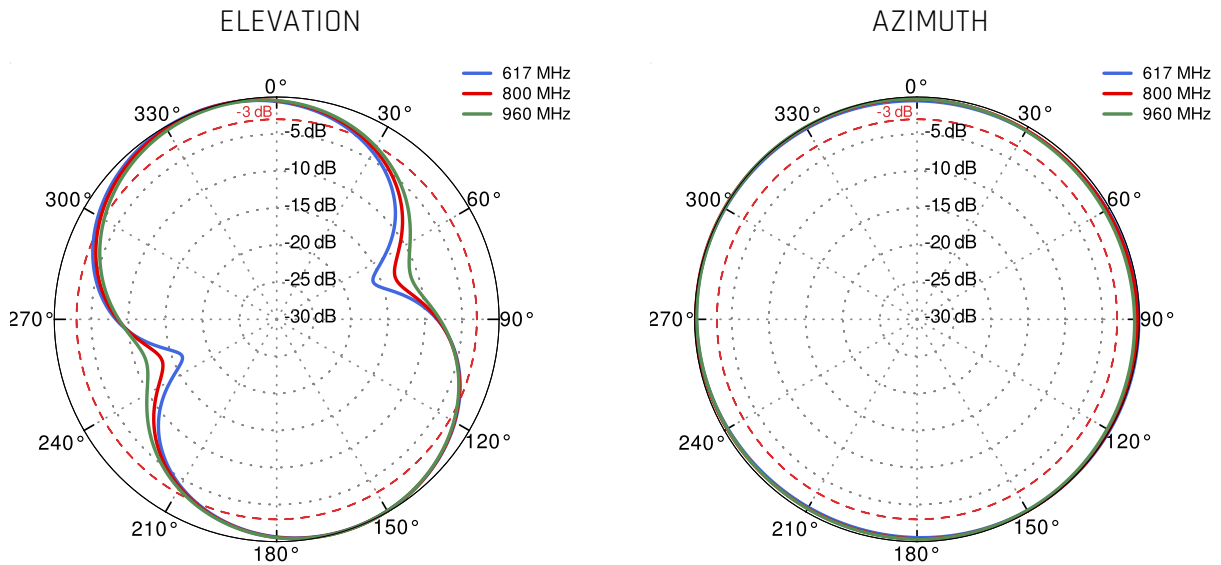
### WI-FI VSWR



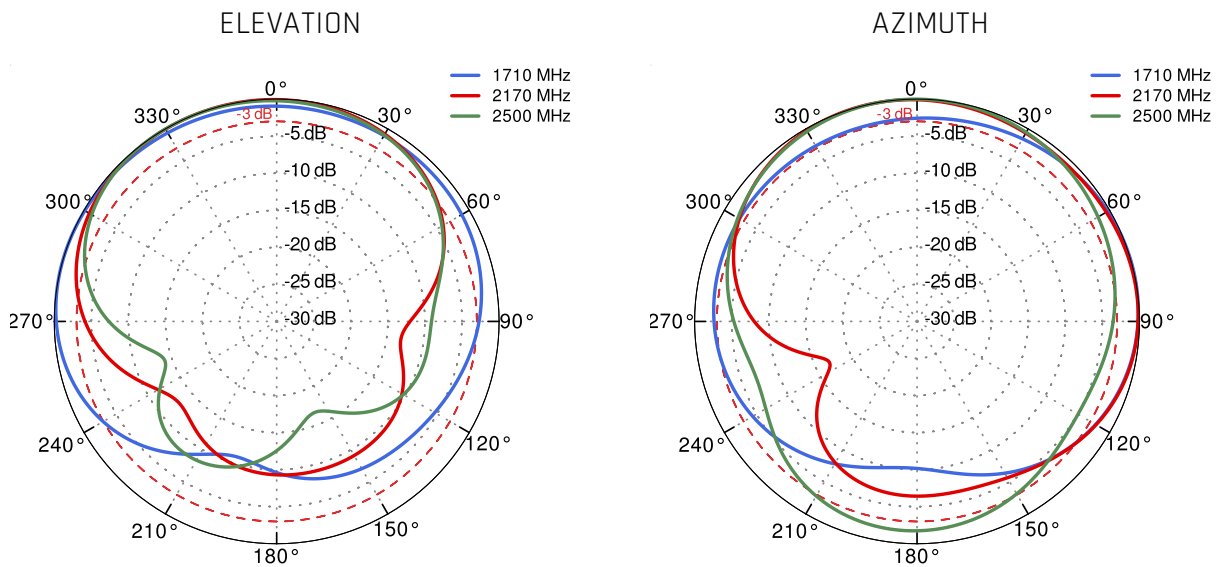
### WI-FI Gain



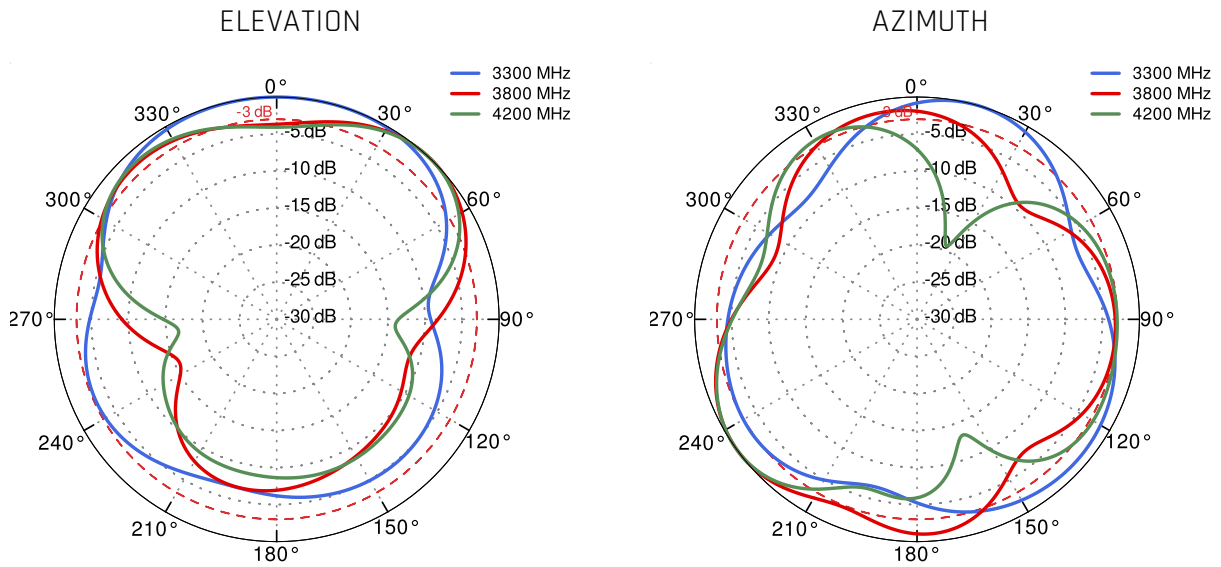
### 5G/LTE From 617MHz to 960MHz



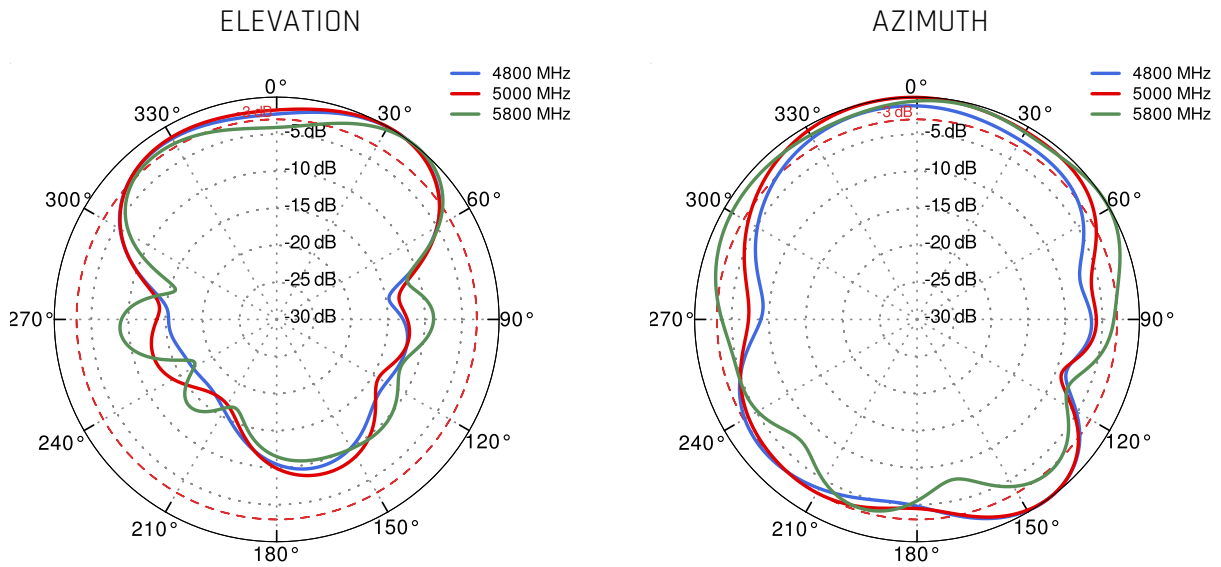
### 5G/LTE From 1.71GHz to 2.5GHz



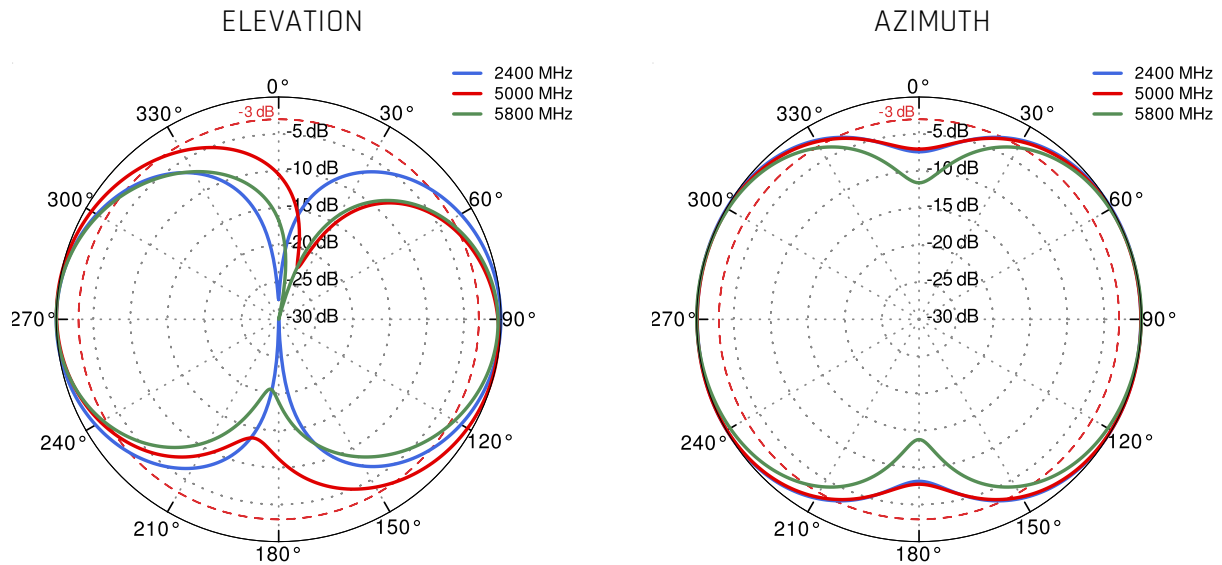
5G/LTE From 3.3GHz to 4.2GHz



5G/LTE From 4.8GHz to 5.8GHz



# Wi-Fi From 2.4 GHz to 5.8 GHz



## DIMENSIONS

