

QuCube for Teltonika CALYX

INTEGRATED MULTI-BAND LTE & 5G OMNI ANTENNA + PLACE TO INSTALL TELTONIKA CALYX (ALL-IN-ONE)

QuCube for Teltonika CALYX is a revolutionary outdoor antenna solution that combines minimized dimensions with exceptional antenna performance. Designed specifically as an **antenna for Teltonika CALYX modem**, it delivers reliable, high-speed wireless connectivity in even the most demanding environments.

This all-in-one unit integrates high-gain omnidirectional **5G antennas** with Teltonika modem into a compact, rugged **IP68-rated waterproof enclosure**. The integration reduces installation complexity while enabling rapid deployment of advanced outdoor 5G solutions.

Engineered for outdoor and mobile applications, **QuCube** is ideal for use in transportation systems, for underground connectivity or urban and public installations. It ensures consistent performance wherever dependable connectivity is essential.

The set contains a **802.3af/at PoE splitter to USB-C**, allowing you to split data and power from a single Ethernet cable and maintain gigabit transfer speeds while protecting the LAN port from damage caused by overvoltage, short circuit or improper connection.



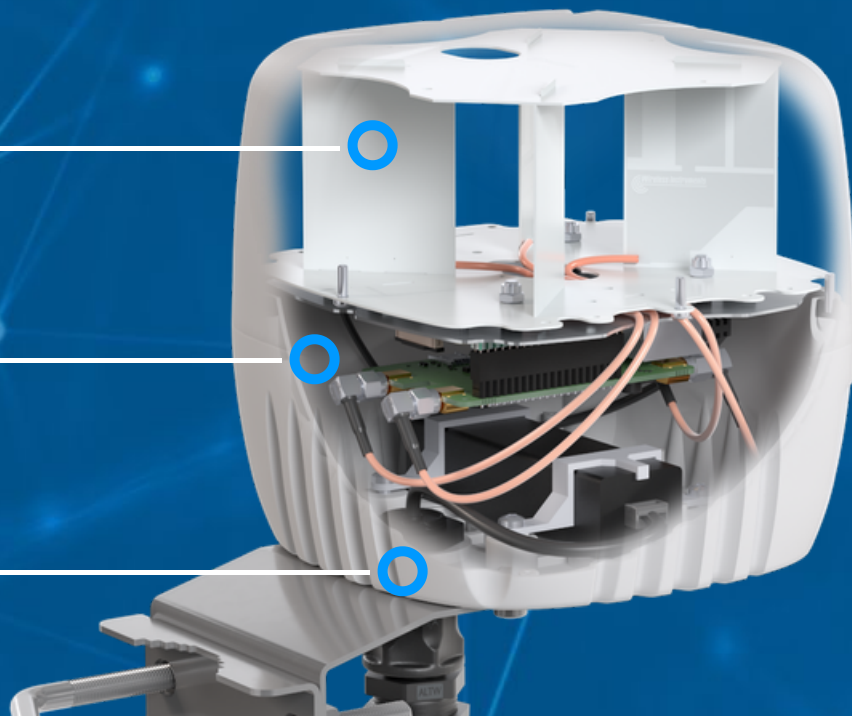
OUTDOOR ANTENNA WORKS IN **ANY WEATHER CONDITIONS**, IP68



ANTENNA **PERFECTLY MATCHED** WITH THE MODEM



MADE IN **EUROPE**



5G/LTE SPECIFICATION

| | |
|----------------------------|--|
| FREQUENCY | 617 - 960 MHz 1.7 - 2.7 GHz 3.3 - 6.0 GHz |
| GAIN | 617 - 960 MHz : 2 dBi 1.7 - 2.7 GHz : 3 dBi 3.3 - 6.0 GHz : 4 dBi |
| SUPPORTED LTE BANDS | 1, 2, 3, 4, 5, 7, 8, 9, 10, 12, 13, 14, 17, 18, 19, 20, 22, 25, 26, 27, 28, 29, 30, 33, 34, 35, 36, 37, 38, 39, 40, 41, 42, 43, 44, 46, 47, 48, 49, 52, 53, 65, 66, 67, 68, 69, 71, 85, 103, 106 |
| SUPPORTED 5G BANDS | n1, n2, n3, n5, n7, n8, n12, n13, n14, n18, n20, n25, n26, n28, n29, n30, n34, n38, n39, n40, n41, n46, n47, n48, n53, n65, n66, n67, n71, n77, n78, n79, n80, n81, n82, n83, n84, n85, n86, n89, n90, n95, n97, n98, n100, n101, n256 |
| VSWR | <1.20, max <2.50 |
| BEAMWIDTH | 360°/35° ±5° |
| POLARIZATION | Vertical |
| IMPEDANCE | 50 Ω |

MECHANICAL SPECIFICATION

| | |
|------------------------------|---|
| MATERIAL | ABS |
| CONNECTOR | QuRJ45 |
| OUTER DIMENSIONS | 160 x 160 x 155 mm 6.3 x 6.3 x 6.10 inch |
| WEIGHT | 1.5 kg |
| OPERATING TEMPERATURE | -40°C to 80°C -40°F to 176°F |
| INGRESS PROTECTION | IP67 and IP68 |

MOUNTING KIT

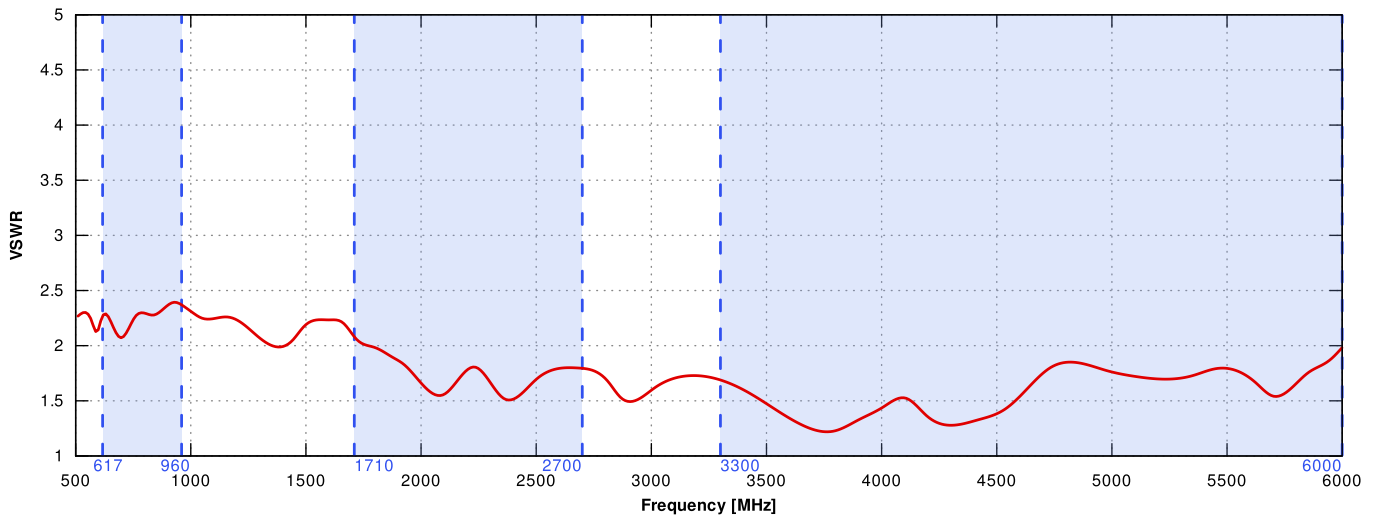
| | |
|-----------------------|----------------------------|
| MATERIAL | Galvanized steel |
| WEIGHT | 0.4kg |
| MOUNTING PLACE | Wall or mast |
| MAST DIAMETER | 25-66 mm 0.98-2.60 inch |

COMPATIBLE ROUTERS

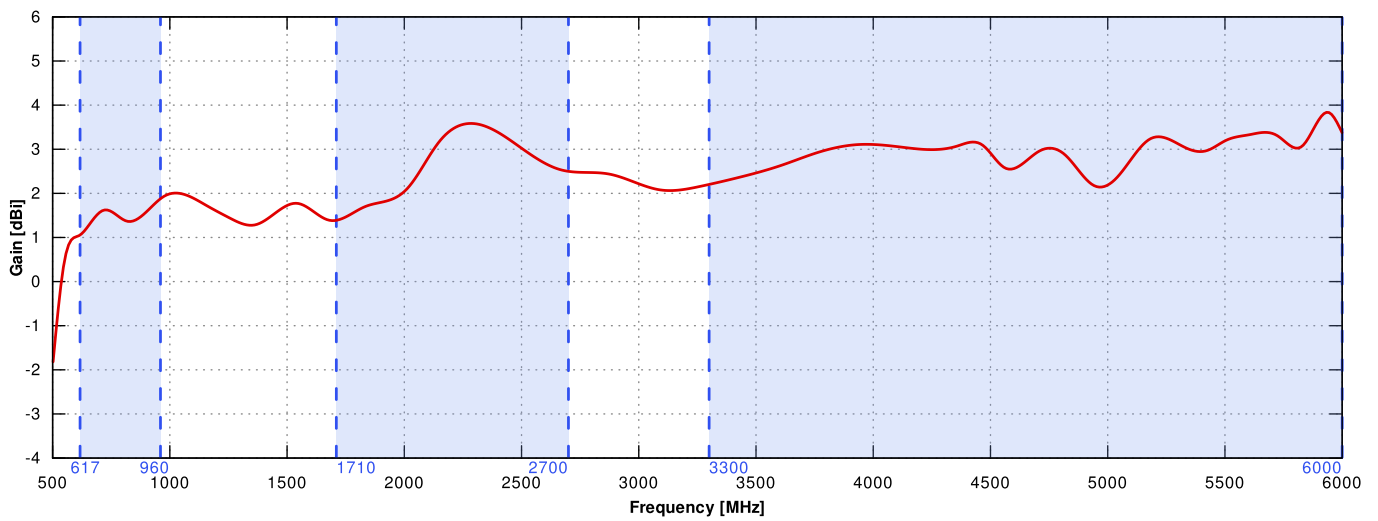
VARIANT: - _____

PLOTS

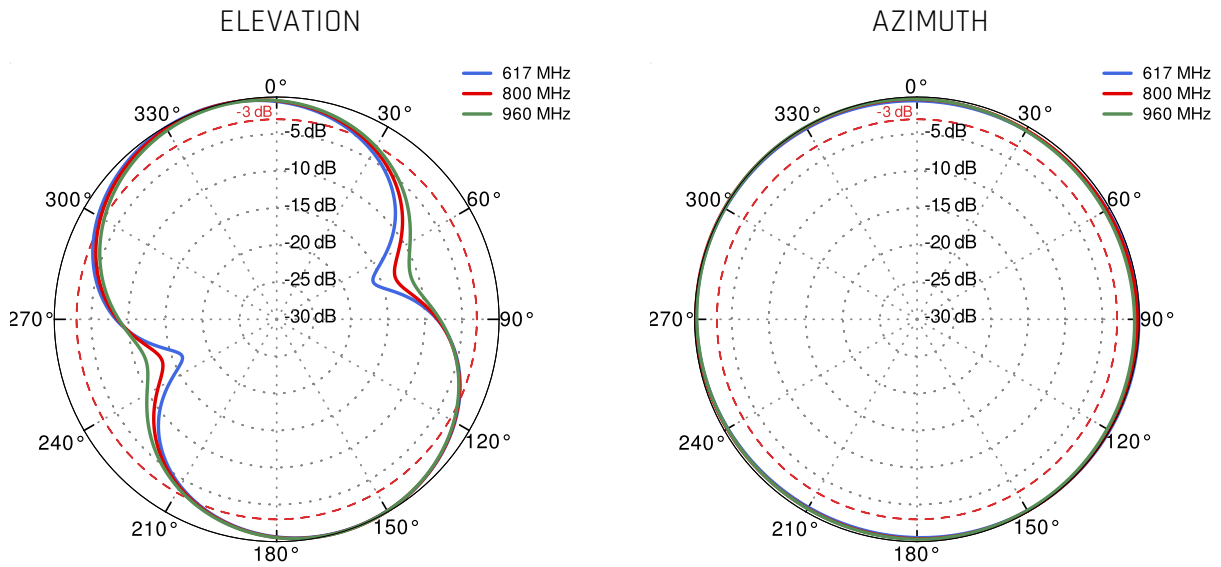
5G/LTE VSWR



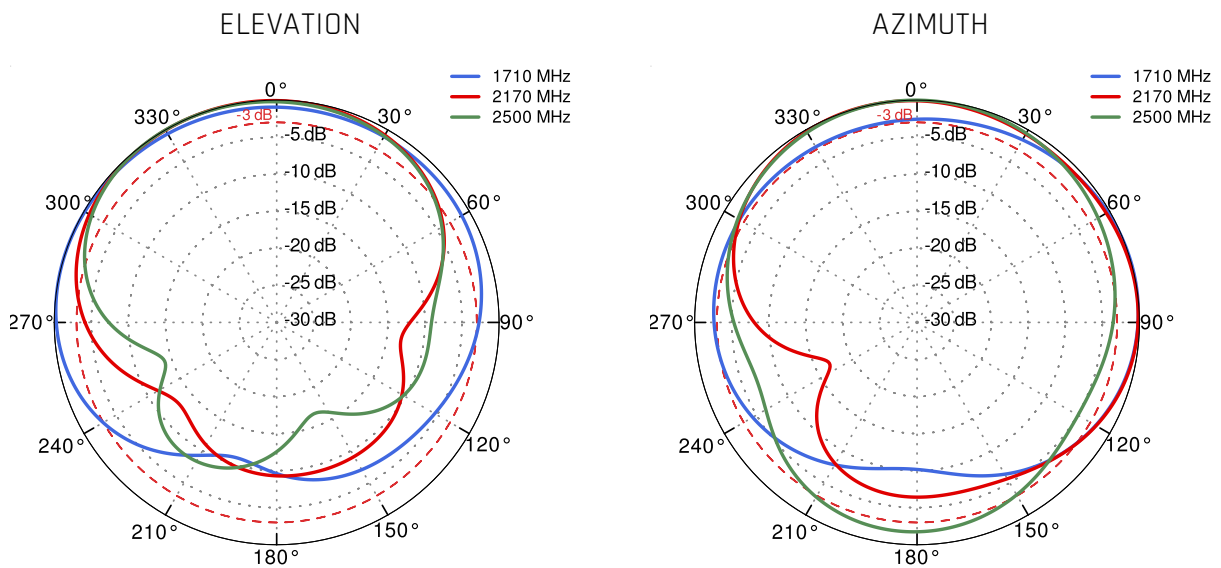
5G/LTE GAIN



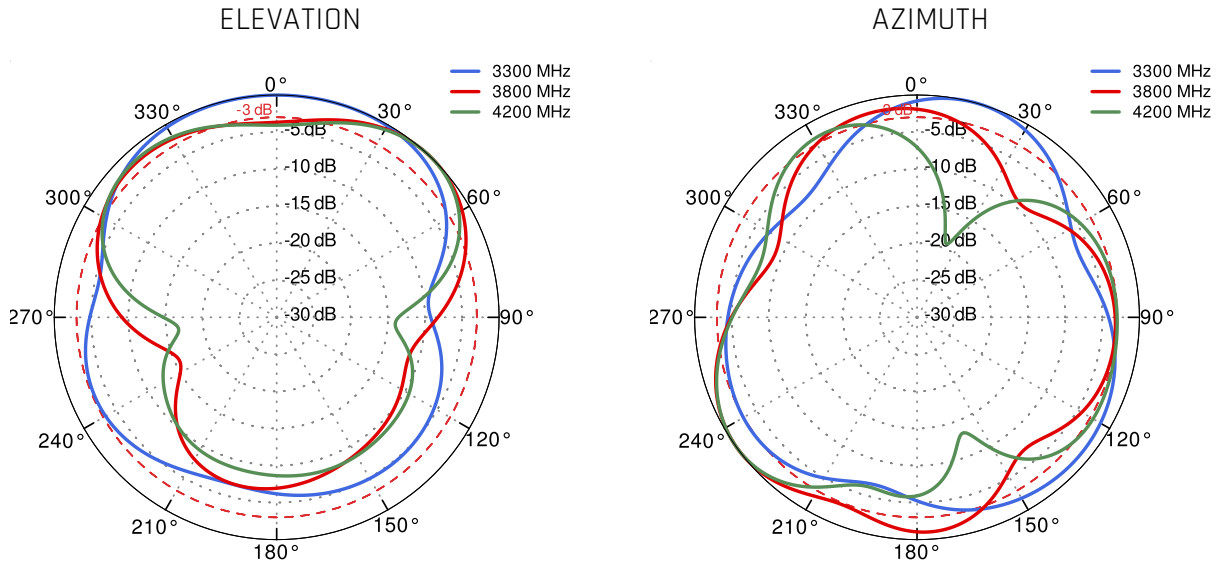
5G/LTE from 617MHz to 960MHz



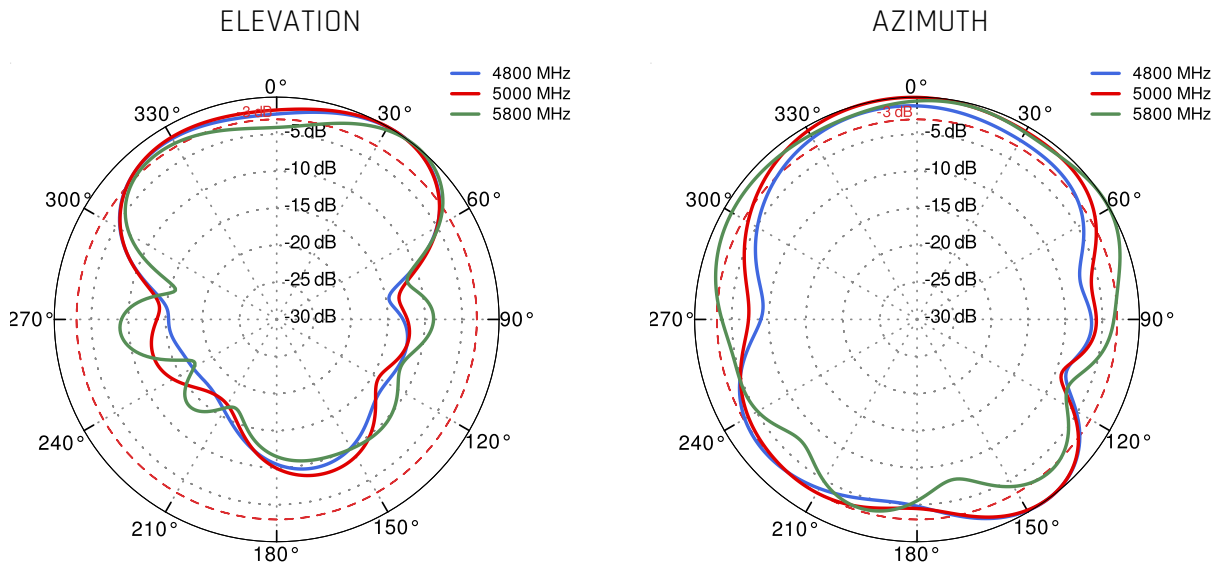
5G/LTE from 1.71GHz to 2.7GHz



5G/LTE from 3.3GHz to 4.2GHz



5G/LTE from 4.8GHz to 5.8GHz



DIMENSIONS

