

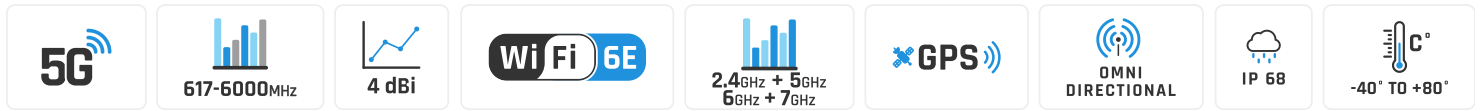
QuCube for Teltonika RUT9xx

**INTEGRATED MULTI-BAND LTE & 5G OMNI ANTENNA + WI-FI ANTENNA + GPS ANTENNA + PLACE TO INSTALL
TELTONIKA RUT986/RUT976/RUT955/RUT956/RUT906 (ALL-IN-ONE)**

QuCube for Teltonika RUT9xx is a revolutionary outdoor antenna solution that combines minimized dimensions with exceptional antenna performance. Designed specifically as an **antenna for Teltonika RUT986, RUT976, RUT955, RUT956 and RUT906 routers**, it delivers reliable, high-speed wireless connectivity in even the most demanding environments.

This all-in-one unit integrates high-gain omnidirectional **5G, Wi-Fi and GPS antennas** with Teltonika routers into a compact, rugged **IP68-rated waterproof enclosure**. The integration reduces installation complexity while enabling rapid deployment of advanced outdoor 5G solutions.

Engineered for outdoor and mobile applications, **QuCube** is ideal for use in transportation systems, for underground connectivity or urban and public installations. It ensures consistent performance wherever dependable connectivity is essential.



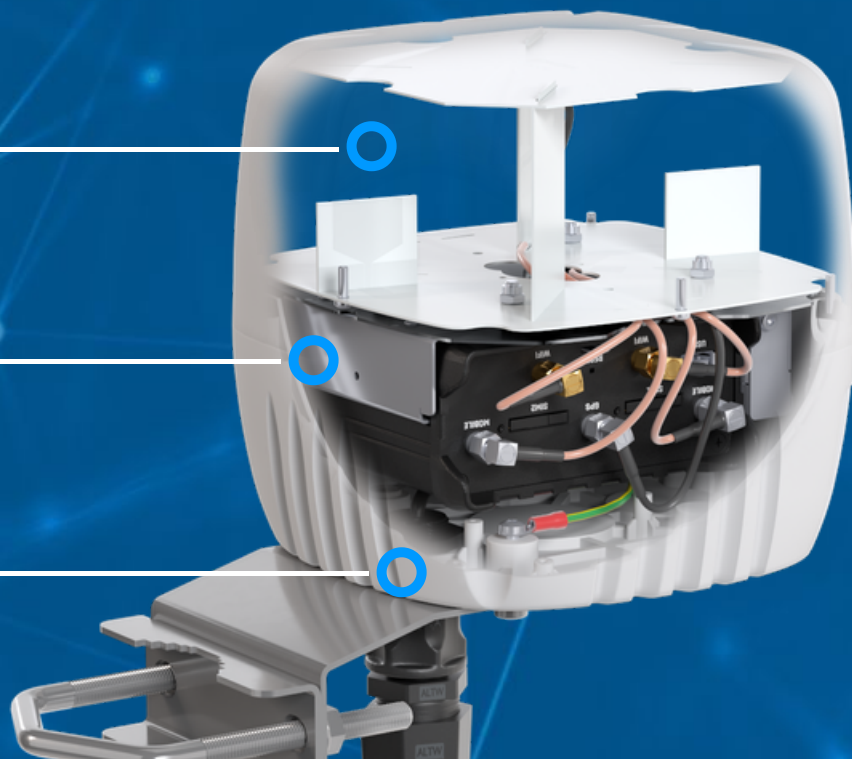
OUTDOOR ANTENNA WORKS IN **ANY WEATHER CONDITIONS**, IP68



ANTENNA **PERFECTLY MATCHED** WITH THE ROUTER



MADE IN **EUROPE**



5G/LTE SPECIFICATION

FREQUENCY	617 - 960 MHz 1.7 - 2.7 GHz 3.3 - 6.0 GHz
GAIN	617 - 960 MHz : 2 dBi 1.7 - 2.7 GHz : 3 dBi 3.3 - 6.0 GHz : 4 dBi
SUPPORTED LTE BANDS	1, 2, 3, 4, 5, 7, 8, 9, 10, 12, 13, 14, 17, 18, 19, 20, 22, 25, 26, 27, 28, 29, 30, 33, 34, 35, 36, 37, 38, 39, 40, 41, 42, 43, 44, 46, 47, 48, 49, 52, 53, 65, 66, 67, 68, 69, 71, 85, 103, 106
SUPPORTED 5G BANDS	n1, n2, n3, n5, n7, n8, n12, n13, n14, n18, n20, n25, n26, n28, n29, n30, n34, n38, n39, n40, n41, n46, n47, n48, n53, n65, n66, n67, n71, n77, n78, n79, n80, n81, n82, n83, n84, n85, n86, n89, n90, n95, n97, n98, n100, n101, n256
VSWR	<1.20, max <2.50
BEAMWIDTH	360°/35° ±5°
POLARIZATION	Vertical
IMPEDANCE	50 Ω

WI-FI SPECIFICATION

FREQUENCY	2.4 - 2.5 GHz 5 - 7.2 GHz
GAIN	2.4 - 2.5 GHz: 2dBi 5 - 7.2 GHz: 5dBi
VSWR	< 2.50
BEAMWIDTH	360°/25°
POLARIZATION	Vertical
IMPEDANCE	50 Ω
MAX INPUT POWER	50W
DC GROUND	Yes

MECHANICAL SPECIFICATION

MATERIAL	ABS
CONNECTOR	QuRJ45
OUTER DIMENSIONS	160 x 160 x 155 mm 6.3 x 6.3 x 6.10 inch
WEIGHT	1.5 kg
OPERATING TEMPERATURE	-40°C to 80°C -40°F to 176°F
INGRESS PROTECTION	IP67 and IP68

MOUNTING KIT

MATERIAL

Galvanized steel

WEIGHT

0.4kg

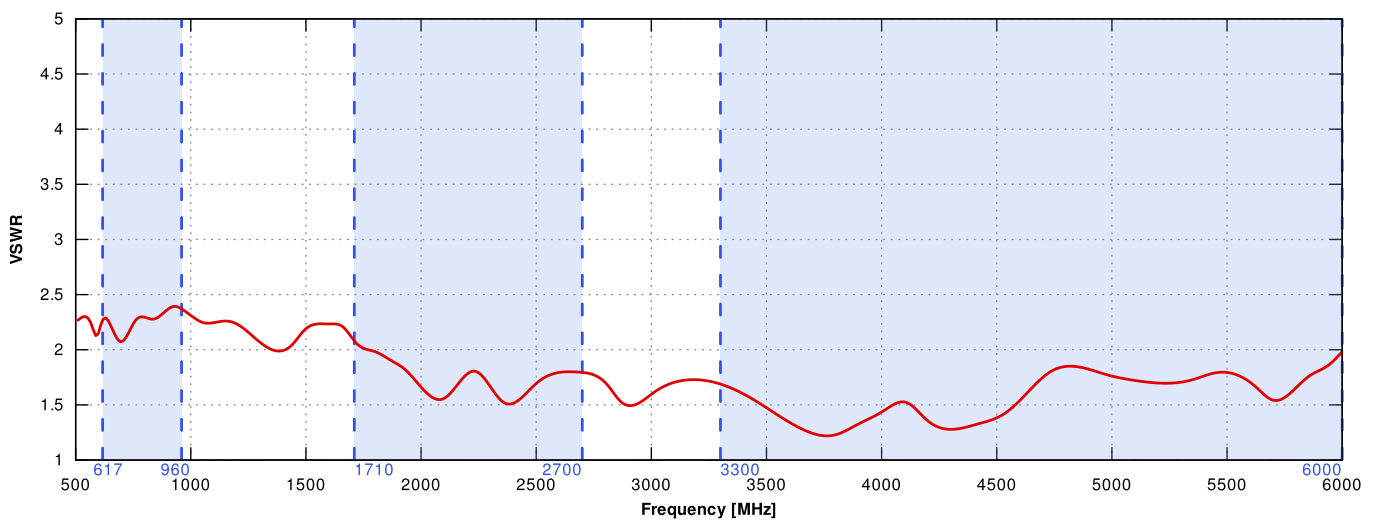
MOUNTING PLACE

Wall or mast

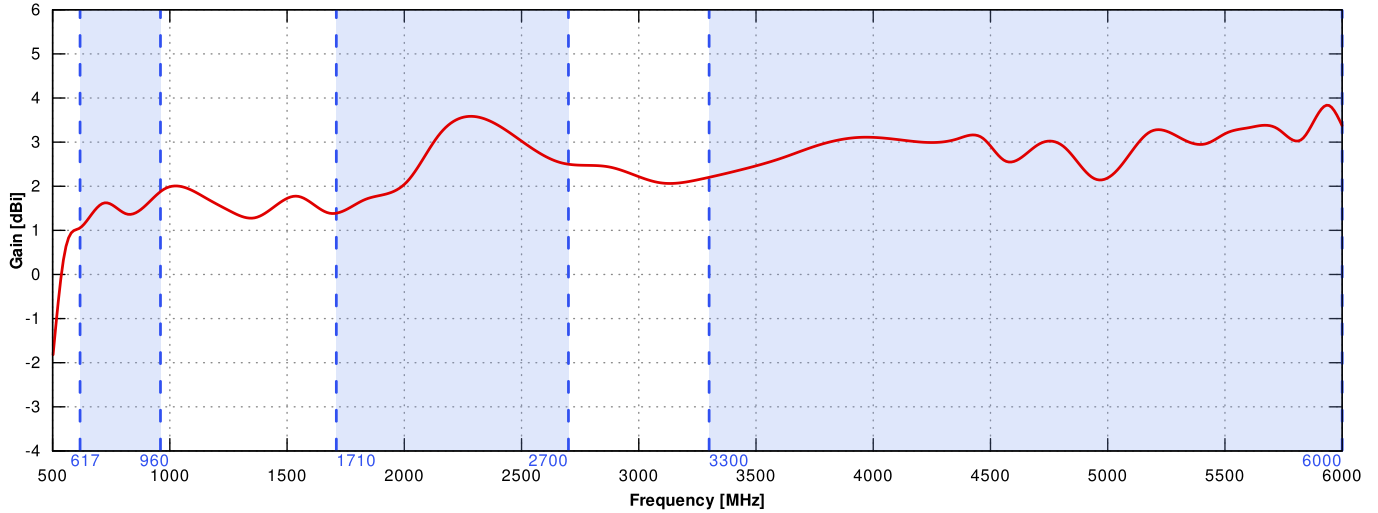
MAST DIAMETER25-66 mm
0.98-2.60 inch

PLOTS

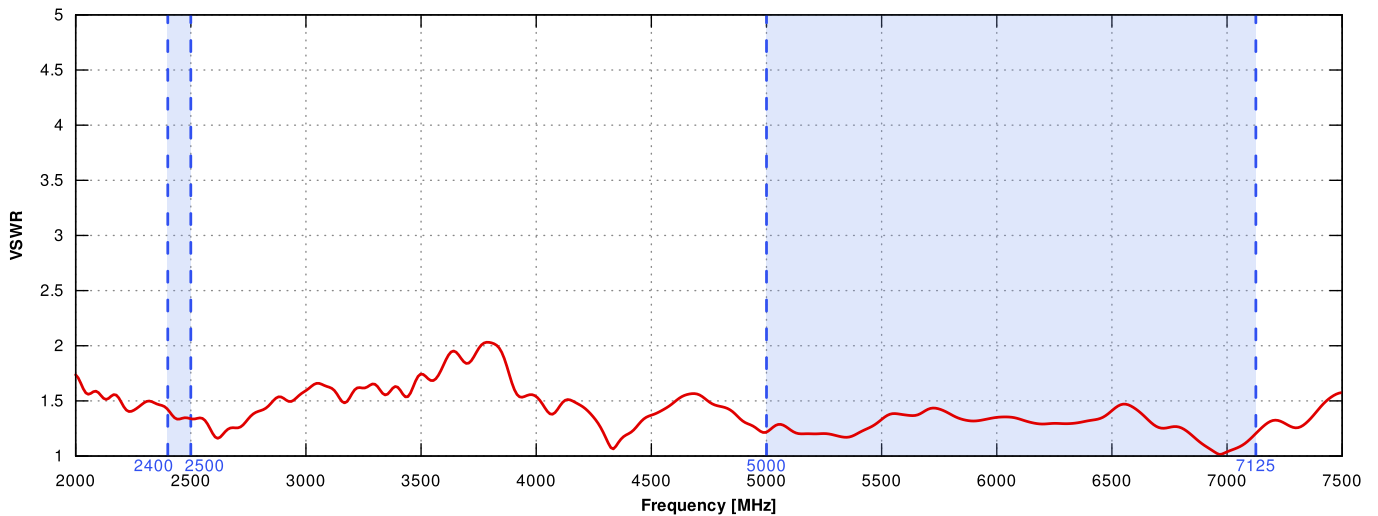
5G/LTE VSWR



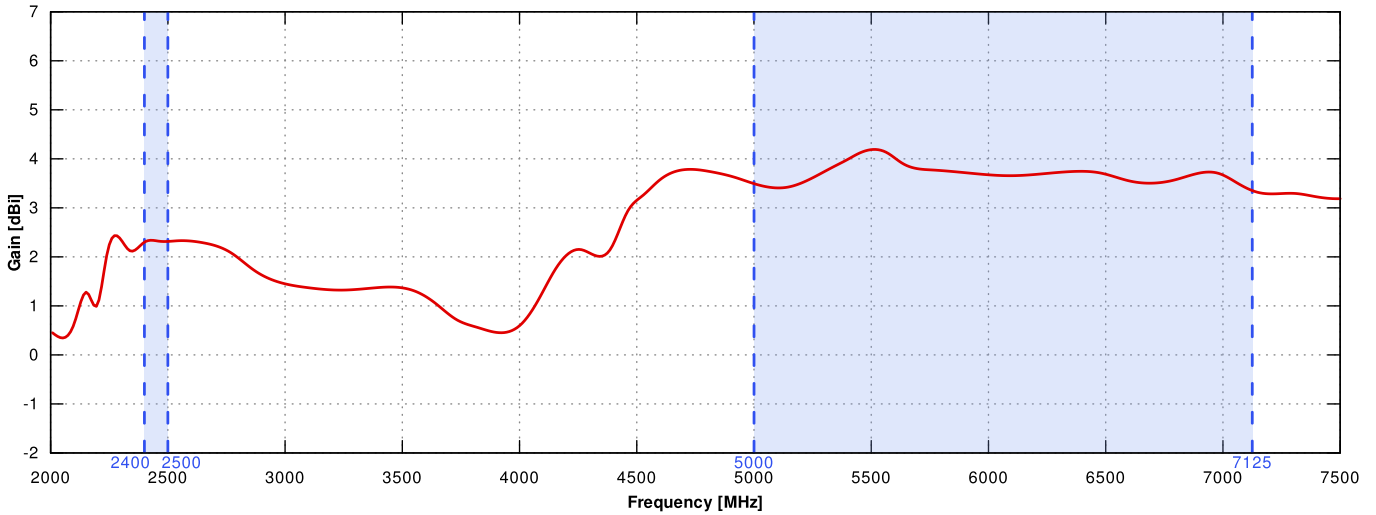
5G/LTE GAIN



Wi-Fi - V VSWR



Wi-Fi - V Gain



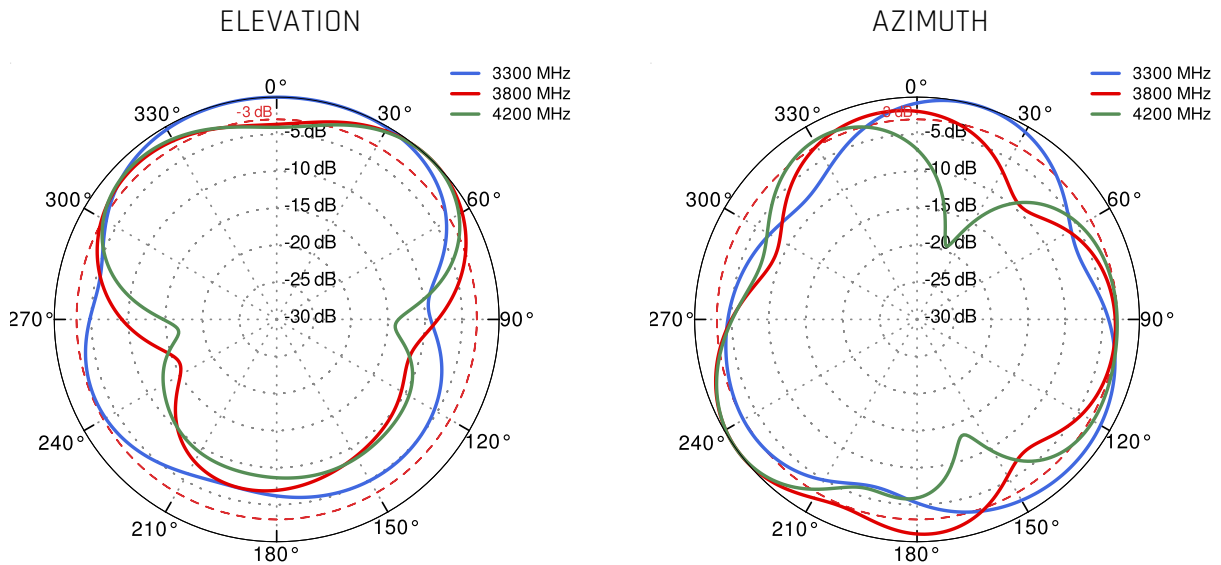
5G/LTE from 617MHz to 960MHz



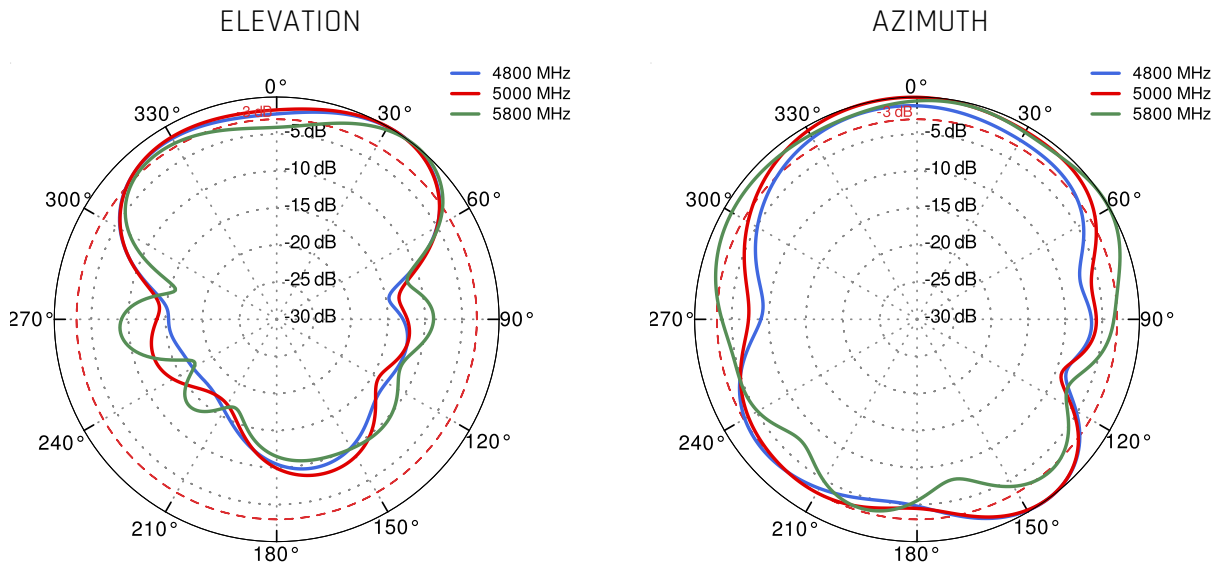
5G/LTE from 1.71GHz to 2.7GHz



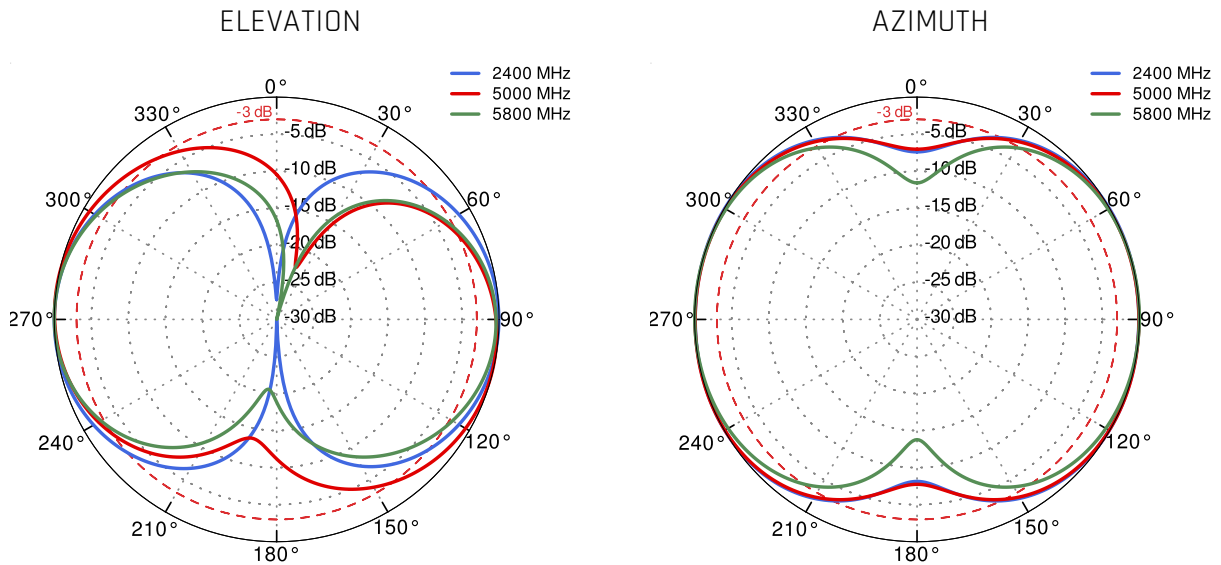
5G/LTE from 3.3GHz to 4.2GHz



5G/LTE from 4.8GHz to 5.8GHz



Wi-Fi V From 2.4 GHz to 6.5 GHz



DIMENSIONS

