

# QuCube for Teltonika

## RUTM20/RUTM30/RUTM31/TRB501

**INTEGRATED MULTI-BAND LTE & 5G OMNI ANTENNA + WI-FI ANTENNA + PLACE TO INSTALL TELTONIKA RUTM20/RUTM30/RUTM31/TRB501 (ALL-IN-ONE)**

**QuCube for Teltonika RUTM20/RUTM30/RUTM31/TRB501** is a revolutionary outdoor antenna solution that combines minimized dimensions with exceptional antenna performance. Designed specifically as an **antenna for Teltonika RUTM20/RUTM30/RUTM31/TRB501 routers**, it delivers reliable, high-speed wireless connectivity in even the most demanding environments.

This all-in-one unit integrates high-gain omnidirectional **5G and Wi-Fi antennas** with Teltonika routers into a compact, rugged **IP68-rated waterproof enclosure**. The integration reduces installation complexity while enabling rapid deployment of advanced outdoor 5G solutions.

Engineered for outdoor and mobile applications, **QuCube** is ideal for use in transportation systems, for underground connectivity or urban and public installations. It ensures consistent performance wherever dependable connectivity is essential.



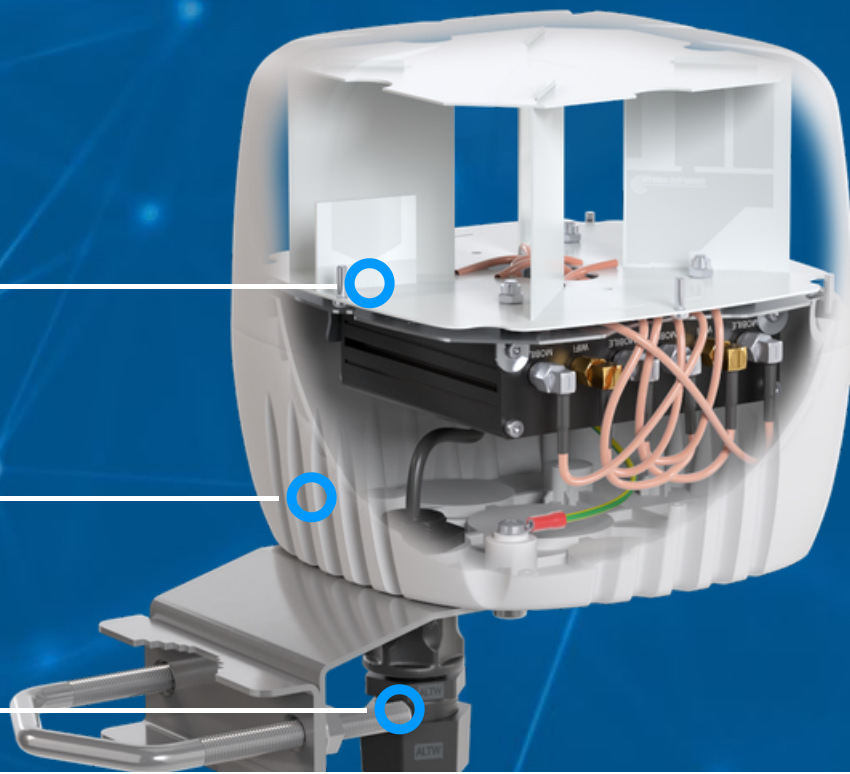
OUTDOOR ANTENNA WORKS IN **ANY WEATHER CONDITIONS**, IP68



ANTENNA **PERFECTLY MATCHED** WITH THE ROUTER



MADE IN **EUROPE**



## 5G/LTE SPECIFICATION

|                            |  |
|----------------------------|--|
| <b>FREQUENCY</b>           | 617 - 960 MHz<br>1.7 - 2.7 GHz<br>3.3 - 6.0 GHz  |
| <b>GAIN</b>                | 617 - 960 MHz : 2 dBi<br>1.7 - 2.7 GHz : 3 dBi<br>3.3 - 6.0 GHz : 4 dBi  |
| <b>SUPPORTED LTE BANDS</b> | 1, 2, 3, 4, 5, 7, 8, 9, 10, 12, 13, 14, 17, 18, 19, 20, 22, 25, 26, 27, 28, 29, 30, 33, 34, 35, 36, 37, 38, 39, 40, 41, 42, 43, 44, 46, 47, 48, 49, 52, 53, 65, 66, 67, 68, 69, 71, 85, 103, 106                                       |
| <b>SUPPORTED 5G BANDS</b>  | n1, n2, n3, n5, n7, n8, n12, n13, n14, n18, n20, n25, n26, n28, n29, n30, n34, n38, n39, n40, n41, n46, n47, n48, n53, n65, n66, n67, n71, n77, n78, n79, n80, n81, n82, n83, n84, n85, n86, n89, n90, n95, n97, n98, n100, n101, n256 |
| <b>VSWR</b>                | <1.20, max <2.50   |
| <b>BEAMWIDTH</b>           | 360°/35° ±5°   |
| <b>POLARIZATION</b>        | Vertical   |
| <b>IMPEDANCE</b>           | 50 Ω   |

## WI-FI SPECIFICATION

|                        |  |
|------------------------|--|
| <b>FREQUENCY</b>       | 2.4 - 2.5 GHz<br>5 - 7.2 GHz             |
| <b>GAIN</b>            | 2.4 - 2.5 GHz: 2dBi<br>5 - 7.2 GHz: 5dBi |
| <b>VSWR</b>            | < 2.50                                   |
| <b>BEAMWIDTH</b>       | 360°/25°                                 |
| <b>POLARIZATION</b>    | Vertical                                 |
| <b>IMPEDANCE</b>       | 50 $\Omega$                              |
| <b>MAX INPUT POWER</b> | 50W                                      |
| <b>DC GROUND</b>       | Yes                                      |

## MECHANICAL SPECIFICATION

|                              |   |
|------------------------------|---|
| <b>MATERIAL</b>              | ABS   |
| <b>CONNECTOR</b>             | QuRJ45                                      |
| <b>OUTER DIMENSIONS</b>      | 160 x 160 x 155 mm<br>6.3 x 6.3 x 6.10 inch |
| <b>WEIGHT</b>                | 1.5 kg                                      |
| <b>OPERATING TEMPERATURE</b> | -40°C to 80°C<br>-40°F to 176°F             |
| <b>INGRESS PROTECTION</b>    | IP67 and IP68                               |

## MOUNTING KIT

**MATERIAL**

Galvanized steel

**WEIGHT**

0.4kg

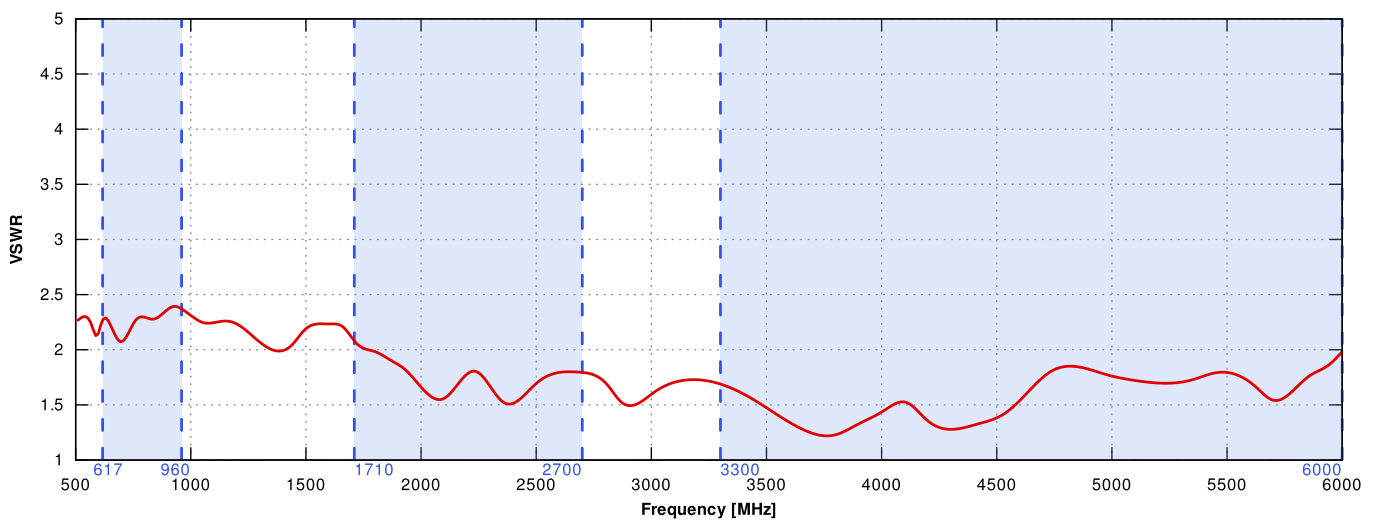
**MOUNTING PLACE**

Wall or mast

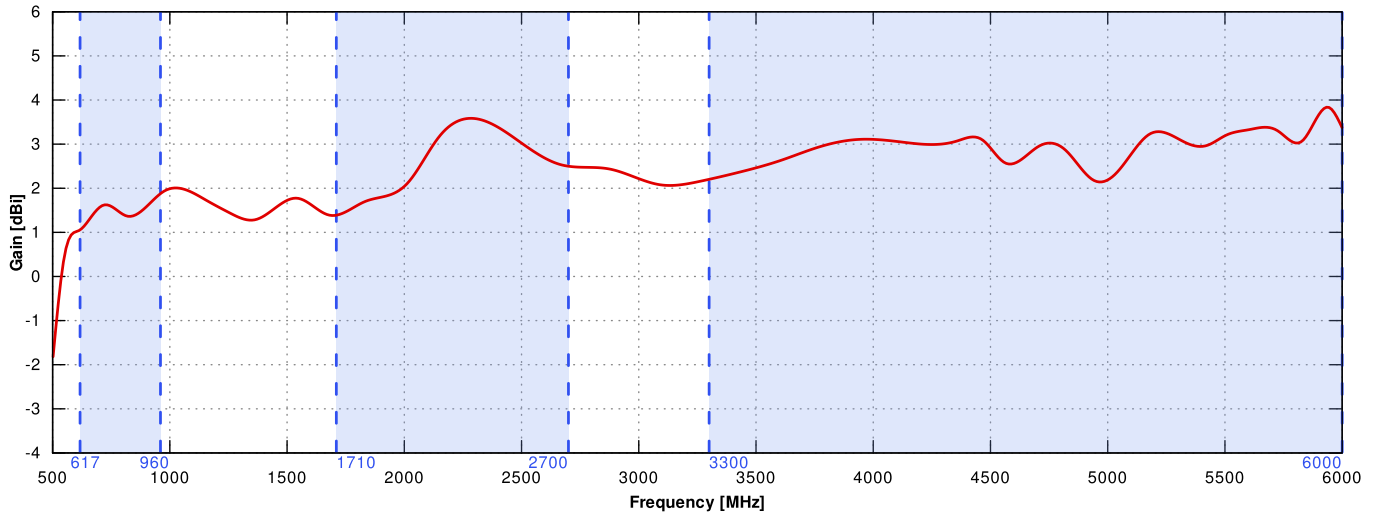
**MAST DIAMETER**25-66 mm  
0.98-2.60 inch

## PLOTS

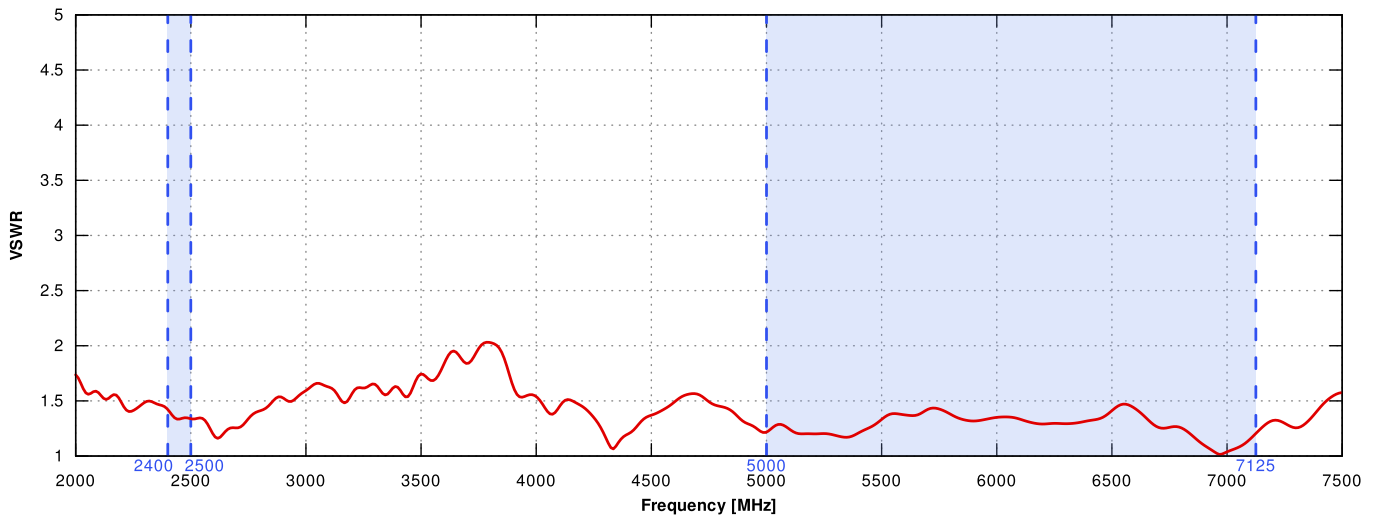
### 5G/LTE VSWR



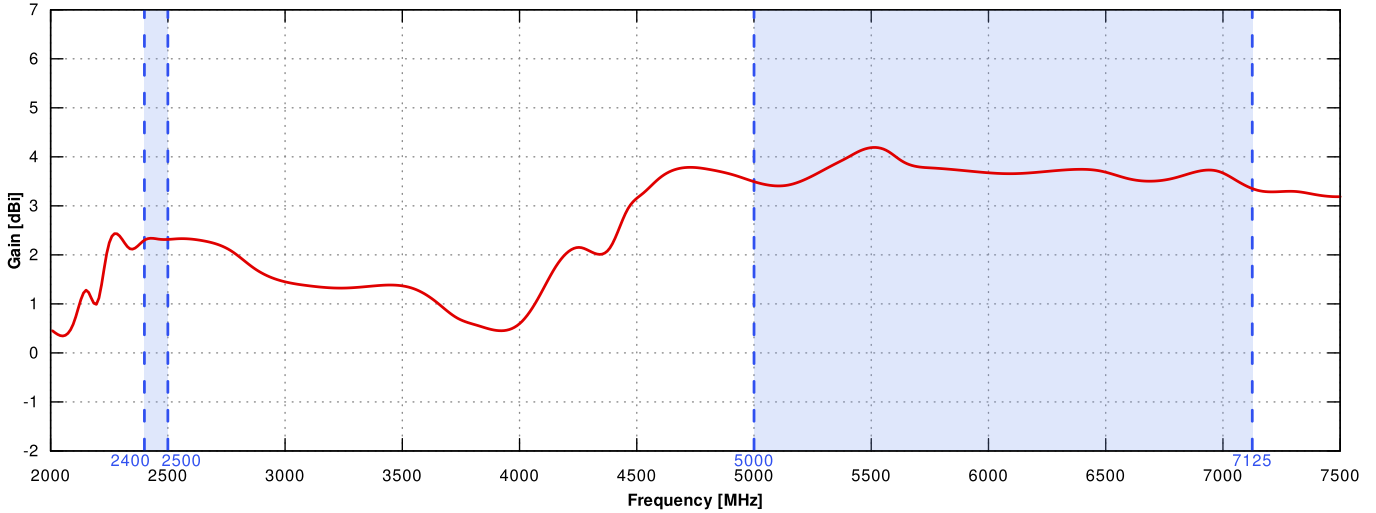
### 5G/LTE GAIN



### Wi-Fi - V VSWR



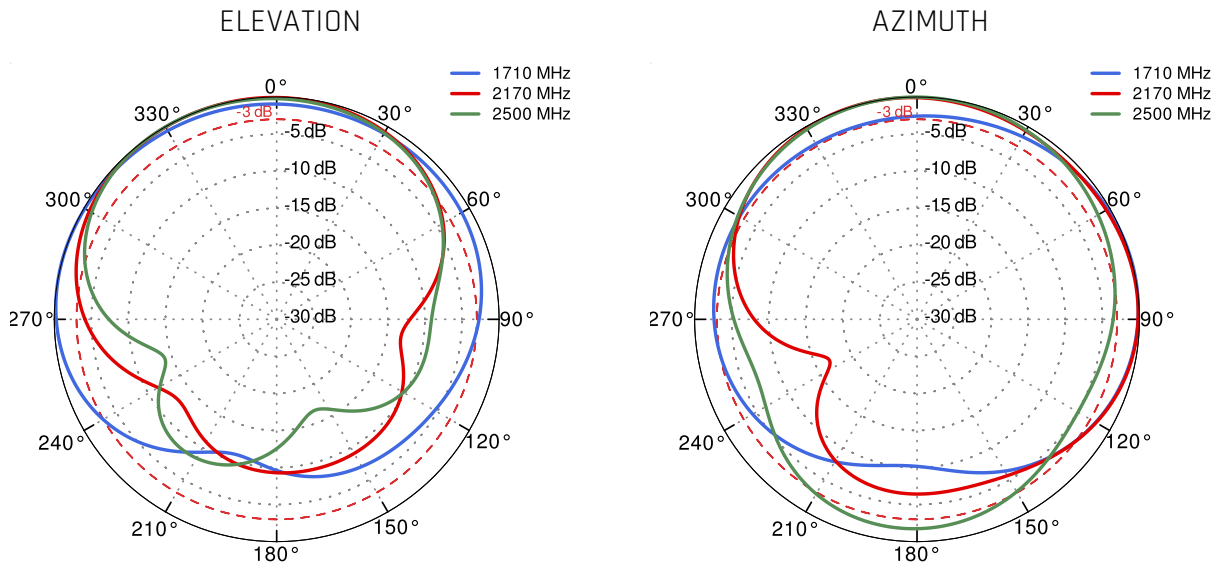
Wi-Fi - V Gain



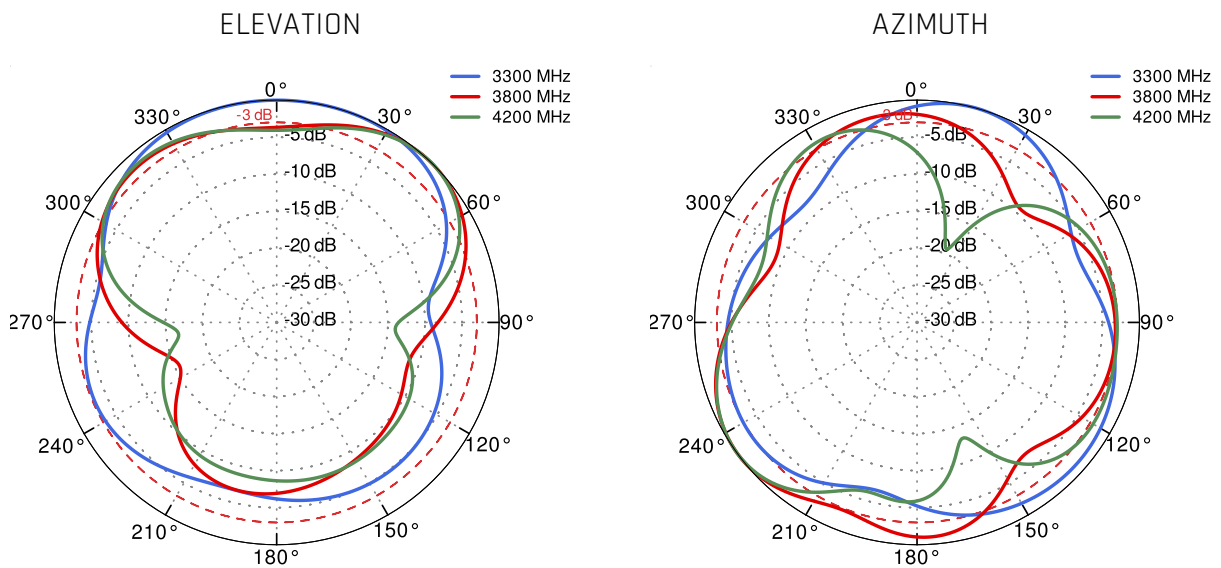
5G/LTE from 617MHz to 960MHz



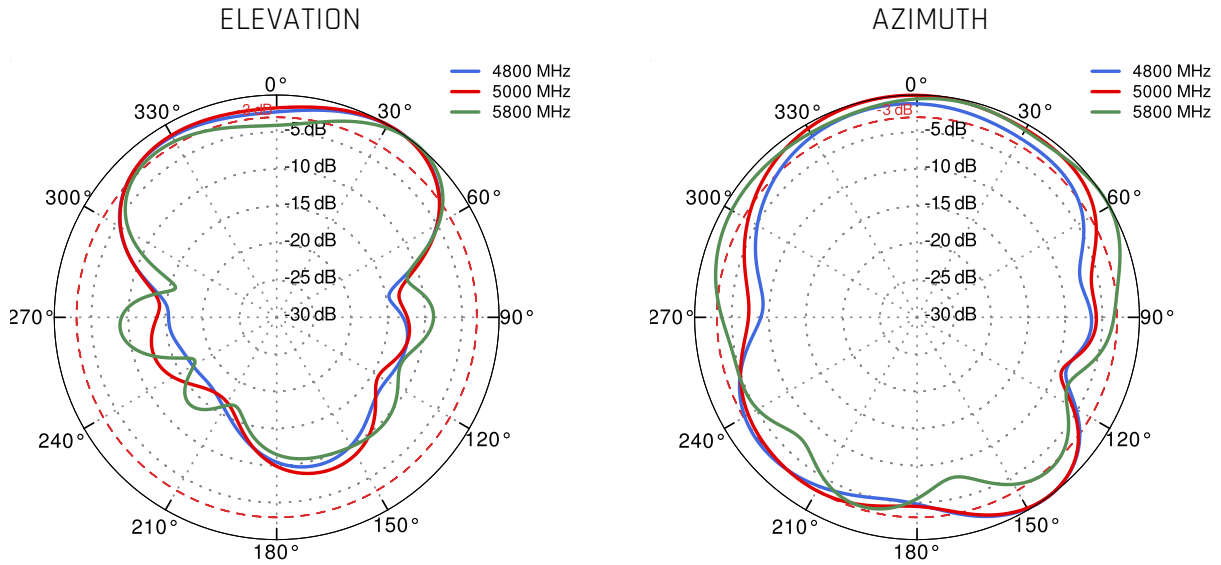
5G/LTE from 1.71GHz to 2.7GHz



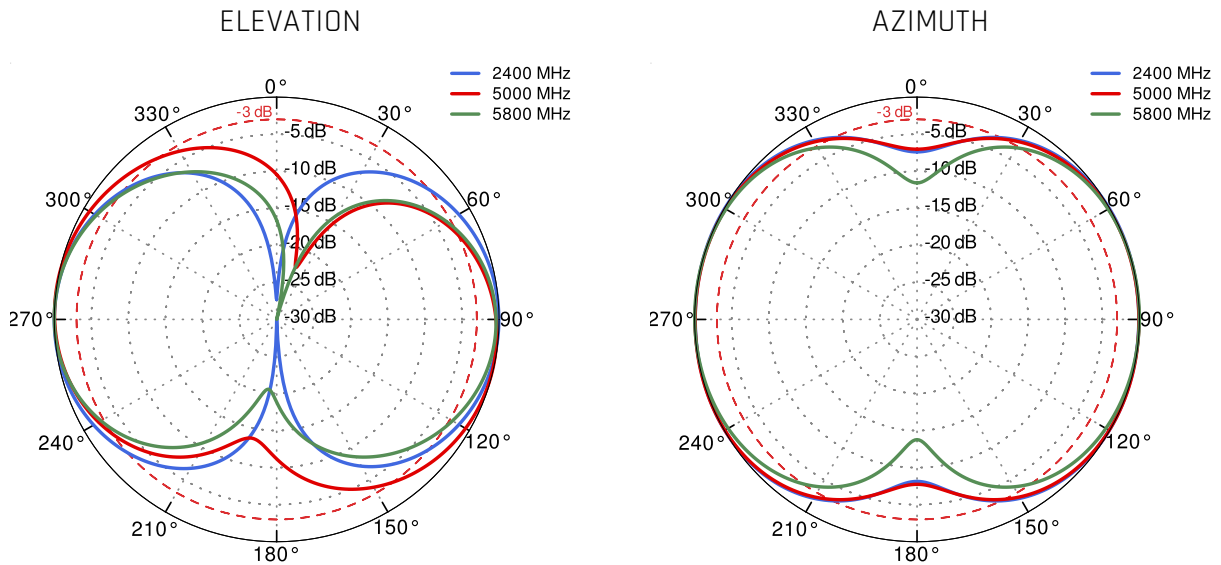
5G/LTE from 3.3GHz to 4.2GHz



5G/LTE from 4.8GHz to 5.8GHz



Wi-Fi V From 2.4 GHz to 6.5 GHz



## DIMENSIONS

