

QuMax XR for Cisco 9120AXE

Integrated outdoor multi band eXtra Range Wi-Fi directional antenna + place to install Cisco 9120AXE

QuMax eXtra Range for Cisco 9120AXE offers the most powerful directional Wi-Fi antenna of all QuWireless antennas. It is dedicated to connections with long distance to base station. It is designed to have **Cisco 9120AXE** router installed inside IP68 enclosure. It is the first choice for fixed installations in industrial environment.



OUTDOOR ANTENNA WORKS IN **ANY WEATHER CONDITIONS**, IP68



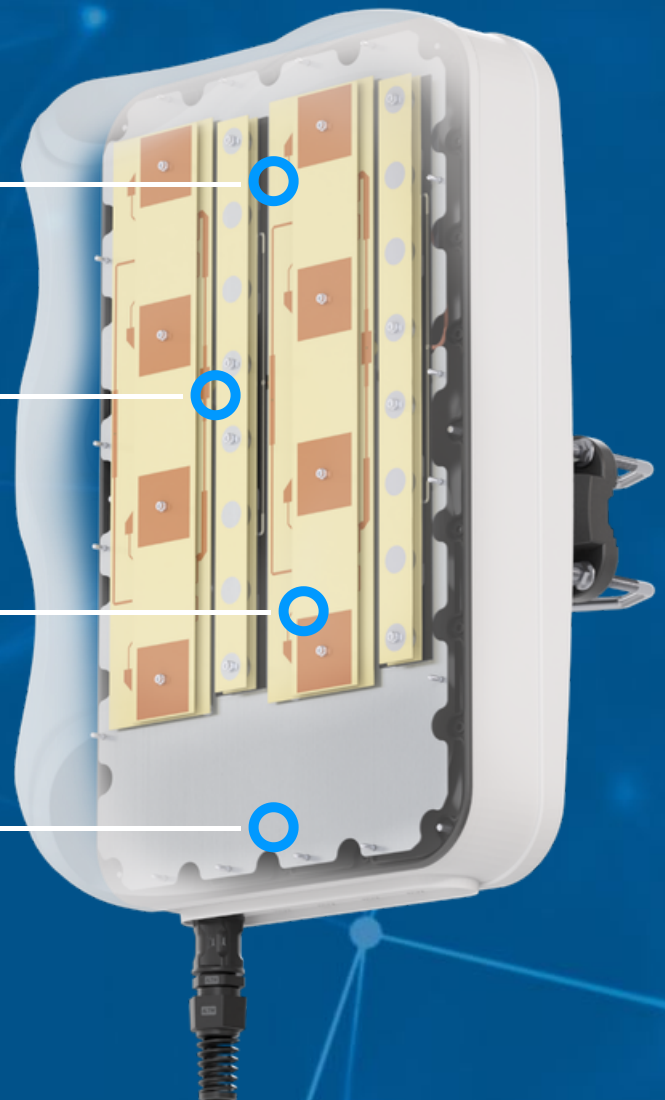
ANTENNA **PERFECTLY MATCHED** WITH THE ACCESS POINT



WALL OR MAST MOUNTING SYSTEM WITH **TWO PLANES, 60 DEGREES REGULATION**



MADE IN **EUROPE**



WI-FI SPECIFICATION

| | |
|---------------------|---|
| FREQUENCY | 2.3 - 2.6GHz 5.1 - 7.125GHz |
| GAIN | 2.3 - 2.6 GHz : 14 dBi 5.1 - 7.125 GHz : 17 dBi |
| VSWR | < 2 |
| BEAMWIDTH | 2.3 - 2.6 GHz : 90° /16° 5.1 - 7.125 GHz : 90° /8° |
| POLARIZATION | Horizontal Vertical |
| IMPEDANCE | 50 Ω |

MECHANICAL SPECIFICATION

| | |
|--|---|
| MATERIAL | ABS |
| CONNECTOR | RJ45 |
| OUTER DIMENSIONS | 486.0 x 292.2 x 210.0 mm 19.13 x 11.50 x 8.27 inch |
| WEIGHT | 2.8 kg |
| OPERATING TEMPERATURE | -40°C to +80°C -40°F to 176°F |
| ENCLOSURE RECOMMENDED TIGHTENING TORQUE | 0.6 - 0.8 Nm |

MOUNTING KIT

DIMENSIONS

9.9 x 10.5 x 14.8 cm
3.9 x 4.13 x 5.83 inch

REGULATION RANGE

+/- 30°

MAST DIAMETER RANGE

25 - 66mm
0.98-2.60 inch

MATERIAL

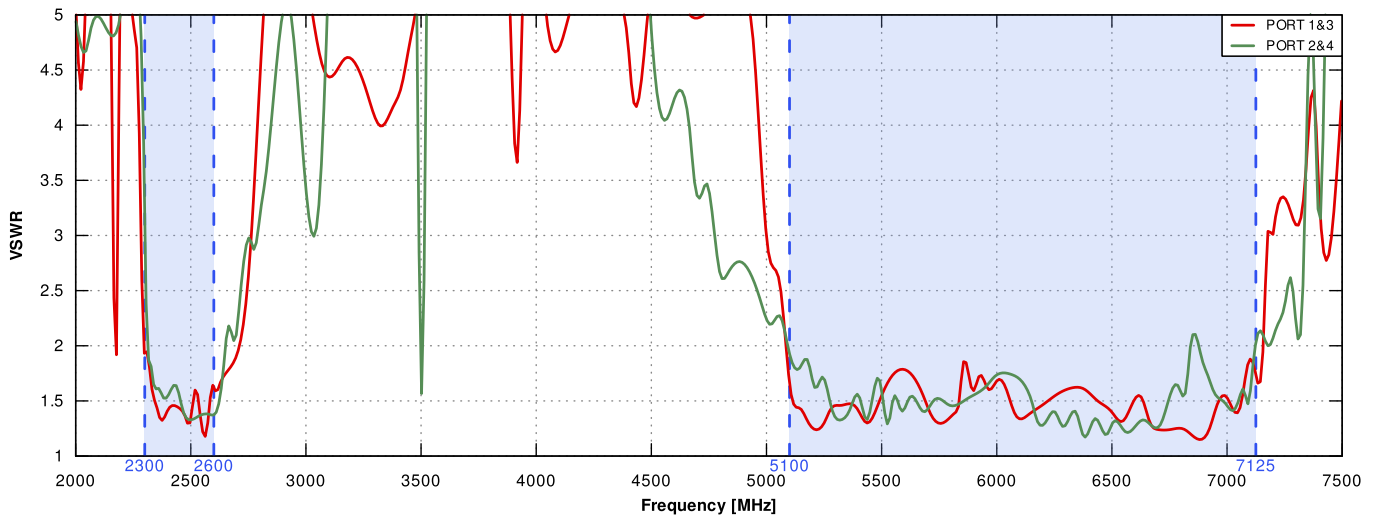
Polyamide with fiberglass + galvanized steel U-Bolts

MOUNTING PLACE

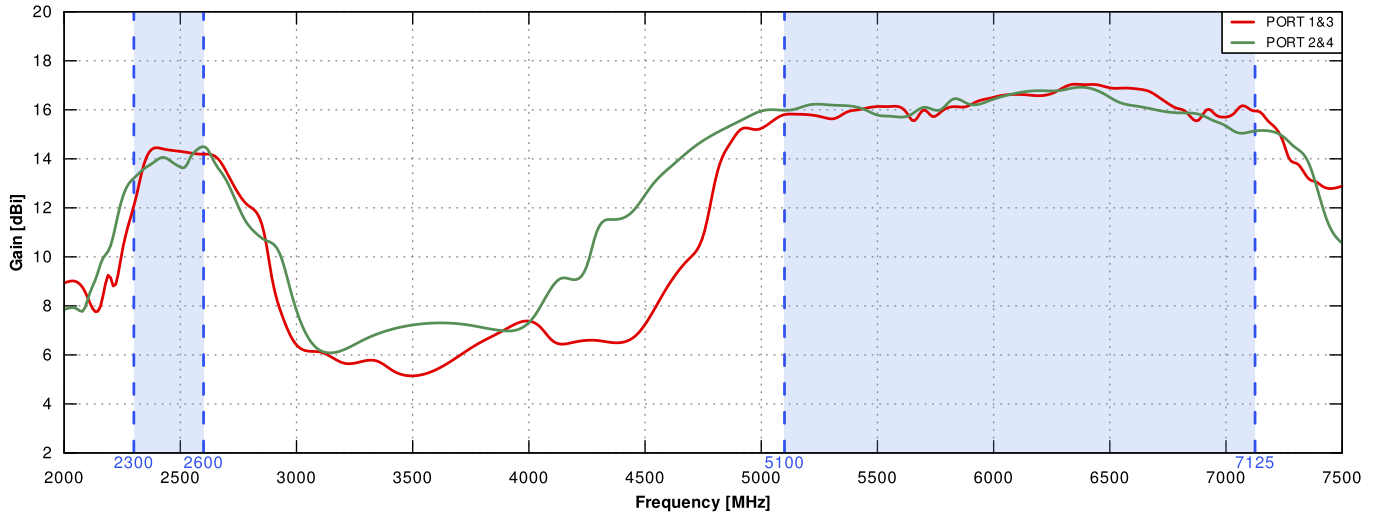
Wall or ceiling or mast

PLOTS

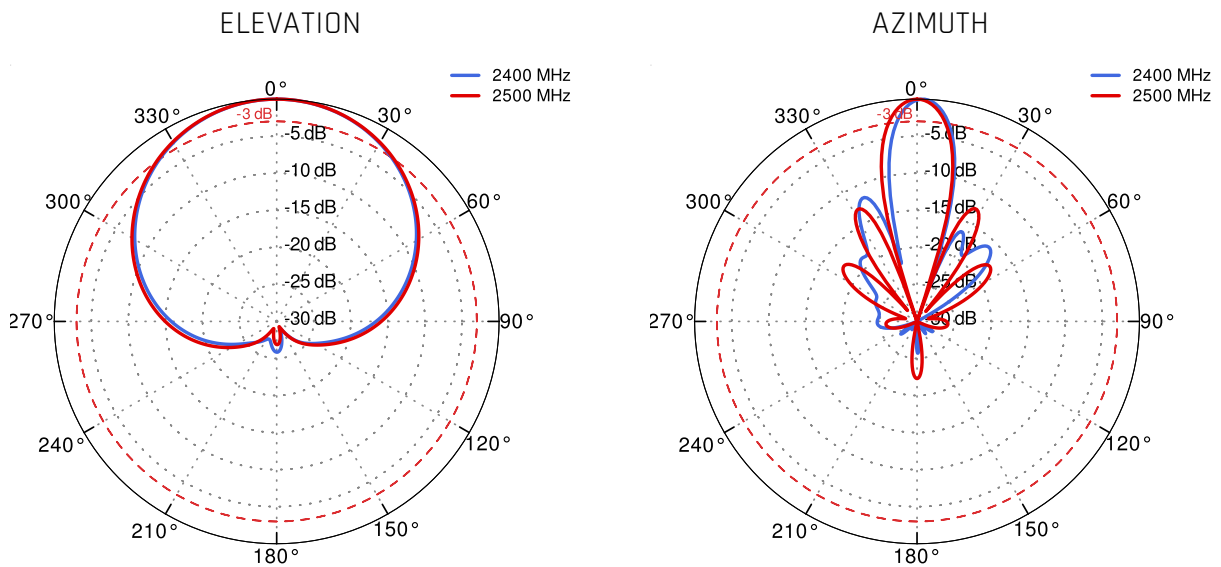
VSWR

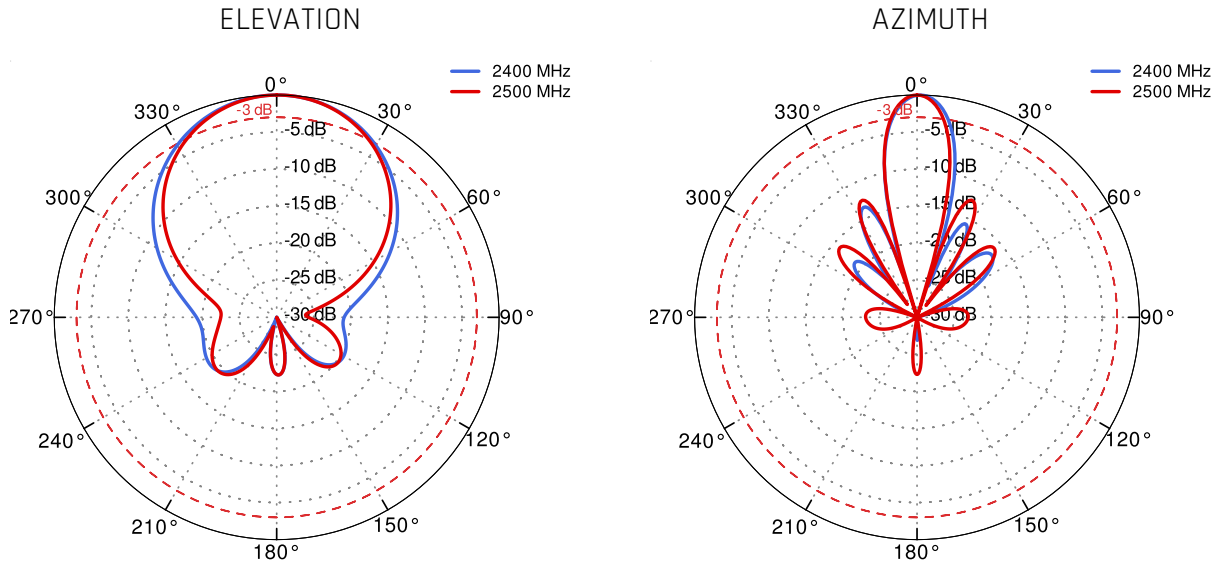
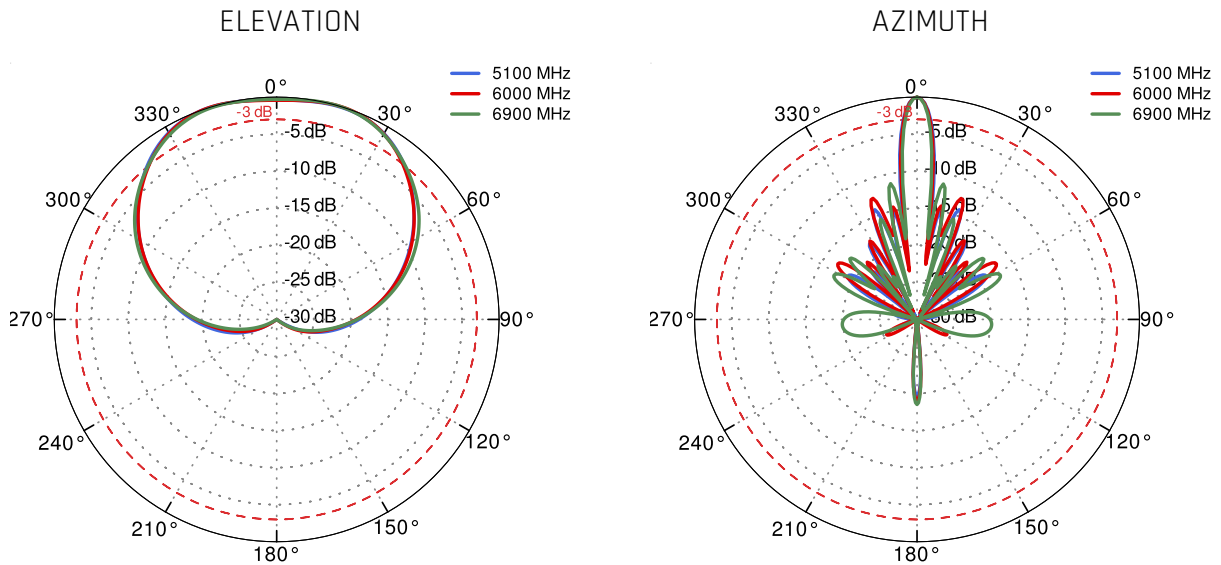


Gain

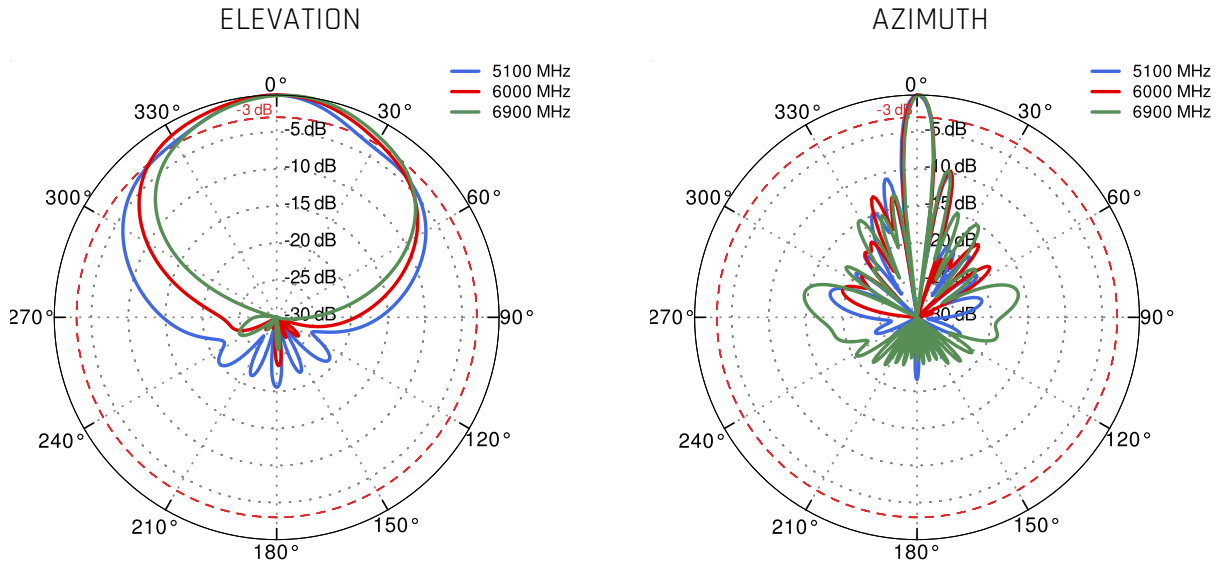


PORT 1&3 From 2.4GHz to 2.5GHz



PORT 2&4 From 2.4GHz to 2.5GHz

PORT 1&3 From 5.1GHz to 5.9GHz


PORT 2&4 From 5.1GHZ to 5.9GHZ



DIMENSIONS

