

# QuOmni Mini 450MHz

## 400-470MHz Terminal Mount Antenna with 90 Degree Hinged SMA(M) Connector

The QuOmni Mini is a high performance 433MHz and 450MHz Terminal mount antenna, it is 198mm tall and 13mm in diameter and can be mounted straight or right angled due to its hinged SMA(M) connector which comes as standard. This antenna performs very well with metal enclosures, which would be a common mounting placement for this antenna as it will be used with a variety of smart meters, remote monitoring devices.



TERMINAL ANTENNA WITH SLEEK,  
STYLISH DESIGN



COVERING ISM/UHF 400-470MHZ



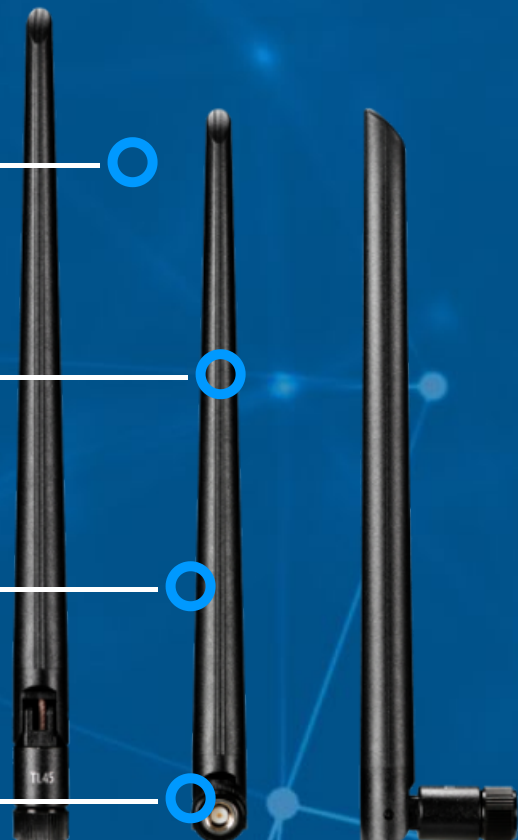
CONNECTOR: SMA(M)



CUSTOM CABLES AND CONNECTORS  
AVAILABLE



ROHS & REACH COMPLIANT



## ANTENNA SPECIFICATION

<b>FREQUENCY</b>	400 - 435 MHz 450 - 470 MHz
<b>GAIN</b>	400 - 435 MHz Straight: 4.2dBi 400 - 435 MHz Bent: 3.7dBi 450 - 470 MHz Straight: 2.5dBi 450 - 470 MHz Bent: 3dBi
<b>RADIATION PATTERN</b>	Omni
<b>POLARIZATION</b>	Linear
<b>IMPEDANCE</b>	50 $\Omega$

## MECHANICAL SPECIFICATION

<b>MATERIAL</b>	PC+PBT
<b>CONNECTOR</b>	SMA(M)
<b>DIMENSIONS</b>	Ø13 x 198mm
<b>WEIGHT</b>	23g
<b>OPERATING TEMPERATURE</b>	-40°C - +85°C

## COMPATIBLE ROUTERS

VARIANT: A0450S \_\_\_\_\_

