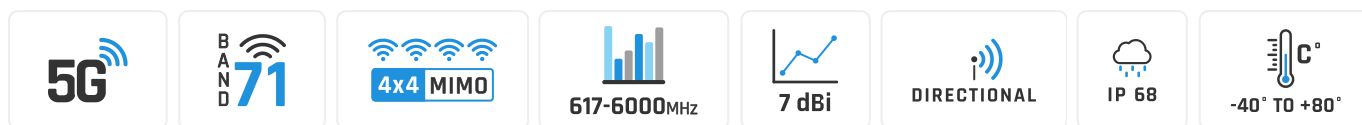


# QuPanel 5G/LTE Global MIMO 4x4

## Directional ultra wideband 5G/LTE MIMO 4x4 antenna

QuPanel **5G**/LTE directional MIMO 4x4 is ultra wideband 5G outdoor antenna. It's primary designed for LTE/5G/3G/2G devices which require high efficiency connections. The antenna covers many LTE bands including the new Extended LTE **Band 71** and frequencies: **600 - 6000MHz**. The mounting bracket allows the antenna to be installed on the pole or on the wall, as the client antenna to receive Internet by LTE/5G/3G/2G. It's ideal solution to use with all industrial and domestic 4x4 5G modems and routers like: Teltonika, Digi, Mikrotik, Robustel, Cisco, etc.



WIDE BAND 600-6000MHZ, 5G TECHNOLOGY



FIBREGLASS, WALL OR POLE MOUNTING BRACKET



FOUR SMA CONNECTORS



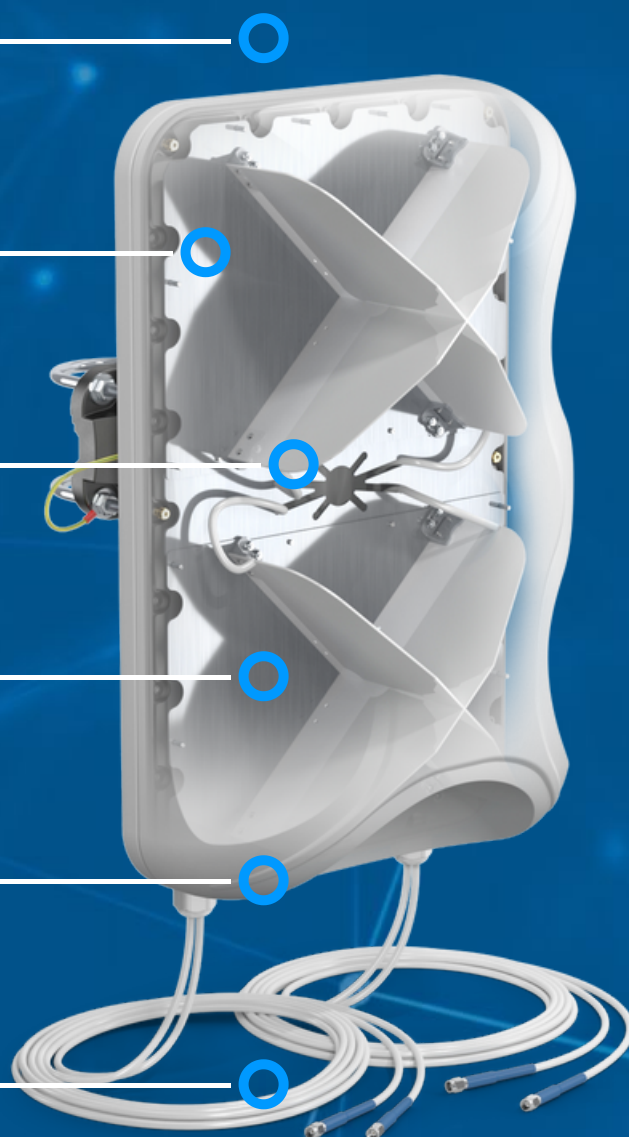
80° BEAMWIDTH



7DBI GAIN



MADE IN EUROPE



## 5G / LTE ANTENNA SPECIFICATION

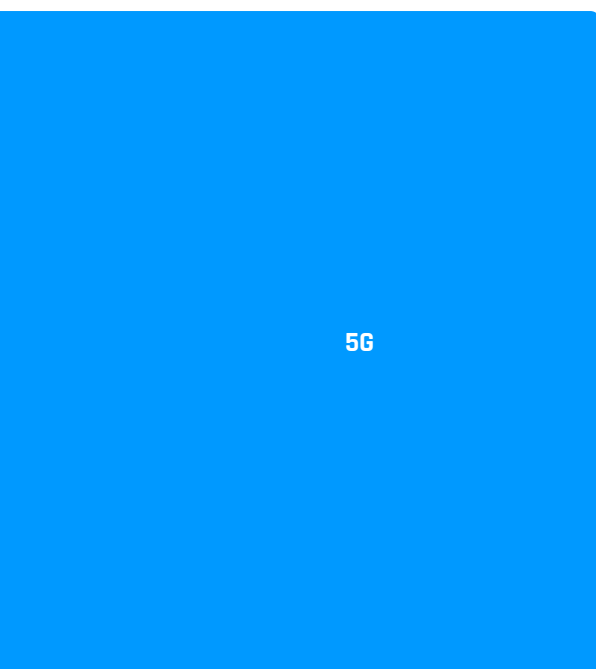
FREQUENCY	617 - 960 MHz 1.7 - 2.7 GHz 3.3 - 4.6 GHz 4.7 - 6.0 GHz
GAIN	617 - 960 MHz : 6 dBi 1.7 - 2.7 GHz : 7 dBi 3.3 - 4.6 GHz : 7 dBi 4.7 - 6.0 GHz : 5.5dBi
SUPPORTED LTE BANDS	1, 2, 3, 4, 5, 7, 8, 9, 10, 12, 13, 14, 17, 18, 19, 20, 22, 25, 26, 27, 28, 29, 30, 33, 34, 35, 36, 37, 38, 39, 40, 41, 42, 43, 44, 46, 47, 48, 49, 52, 53, 65, 66, 67, 68, 69, 71, 85, 103, 106
SUPPORTED 5G BANDS	n1, n2, n3, n5, n7, n8, n12, n13, n14, n18, n20, n25, n26, n28, n29, n30, n34, n38, n39, n40, n41, n46, n47, n48, n53, n65, n66, n67, n71, n77, n78, n79, n80, n81, n82, n83, n84, n85, n86, n89, n90, n95, n97, n98, n100, n101, n256
VSWR	<2.00, max <3.00
BEAMWIDTH	80°/80° ±15°
POLARIZATION	X (±45degrees)
IMPEDANCE	50 $\Omega$

## MECHANICAL SPECIFICATION

MATERIALS	ABS, aluminum, PTFE, fiberglass
CONNECTOR TYPE	SMA
INGRESS PROTECTION	IP68
DIMENSIONS	486.0 x 292.2 x 105.6 mm 19.13 x 11.50 x 4.16 inch
WEIGHT	2.8 kg 6.17 lbs
OPERATING TEMPERATURE	From -40°C to 80°C From -40°F to 176°F
MAST DIAMETER	25-66mm 0.98-2.60 inch

## FREQUENCY BANDS

LTE / 4G	1	2	3	4	5	7	8	6000 MHz
	9	10	12	13	14	17	18	
	19	20	22	25	26	27	28	
	29	30	33	34	35	36	37	
	38	39	40	41	42	43	44	
	45	47	48	49	52	53	65	
	66	67	68	69	71	85	103	
	106							
617 MHz								


**5G**

	n1	n2	n3	n5	n7	n8	n12	
	n13	n14	n18	n20	n25	n26	n28	
	n29	n30	n34	n38	n39	n40	n41	
617 MHz	n46	n47	n48	n53	n65	n66	n67	6000 MHz
	n71	n77	n78	n79	n80	n81	n82	
	n83	n84	n85	n86	n89	n90	n95	
	n97	n98	n100	n101	n256			

## COMPATIBLE ROUTERS

VARIANTS: AP5G4-G, AP5G4-G1


**TELTONIKA**

RUTC50, RUTM30, RUTM31, RUTM51, RUTM54, RUTM55, RUTM56, RUTM59, RUTX12, RUTX14, RUTX50, TRB500


**ROBUSTEL**

EG5120, EG5200, R2000, R5010, R5020, R5020 Lite


**COMSET**

CM550W, CM580W, CM685VX, CM770W-6, CM950W


**DIGI**

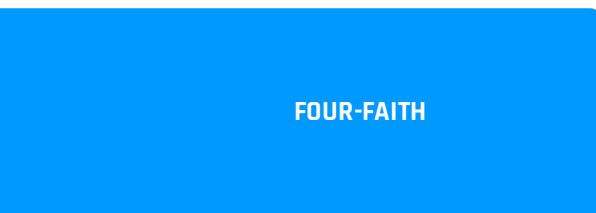
EX50, IX40, TX54 LTE-Advanced, TX64


**ERICSSON (CRADLEPOINT)**

E300, E3000, IBR1700, R1900, R980, W1850, W4005


**FORTINET**

FEX-311F, FEX-311F


**FOUR-FAITH**

5G Industrial CPE F-NR200, 5G Industrial Router F-NR100, 5G SIM WiFi Router F-NR120, 5G Smart Light Pole Gateway F-G300, 5G WiFi Router with SIM Card Slot F-NR130, Smart Light Pole Gateway F-G310


**MILESIGHT**

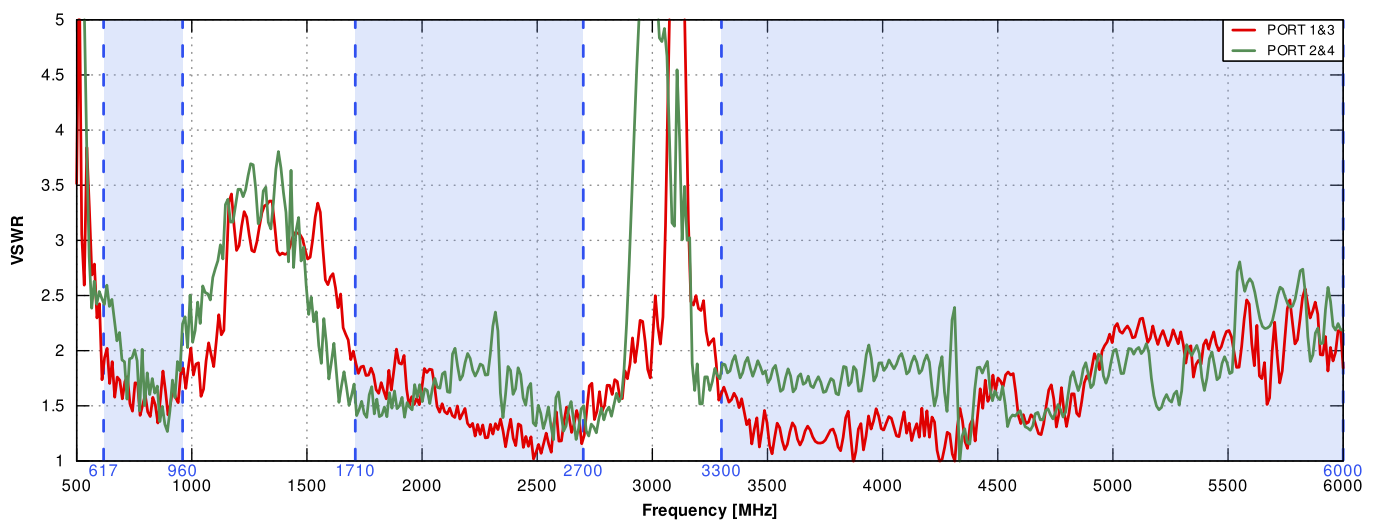
UF31, UR75



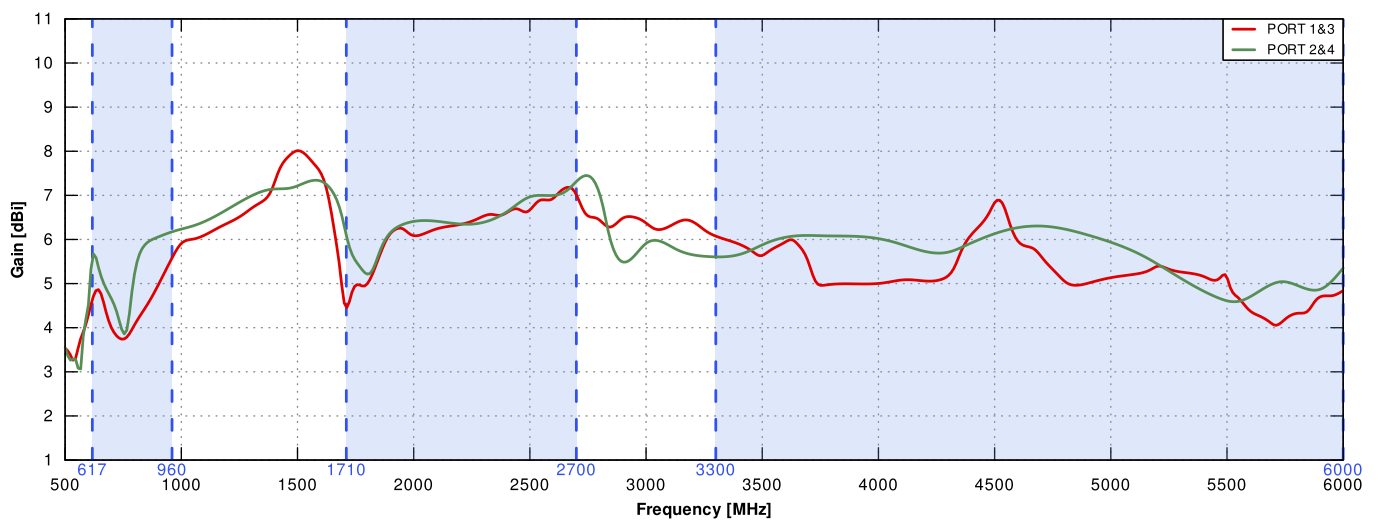
PEPLINK	Balance 310 5G, Balance 310 fiber 5G, BR1 Mini 5G, BR1 Pro (CAT-20), BR1 Pro CAT-20, BR2 PRO, MAX BR1 Pro 5G, MAX HD2, MAX HD2 Mini, MAX Transit, MAX Transit Duo Pro, UBR Plus
PROROUTE	H685 WRT M2M 5G Router, H900 5G Router
ROBUSTEL	EG5120, EG5200, R2000, R5010, R5020, R5020 Lite
SEMTECH (SIERRA WIRELESS)	AirLink MG90 5G, AirLink XR60
SIEMENS	6GK5853-2EA00-2DA1
TELTONIKA	RUTC50, RUTM30, RUTM31, RUTM51, RUTM54, RUTM55, RUTM56, RUTM59, RUTX12, RUTX14, RUTX50, TRB500
WAVETEL	W4600-NR 5G, W4A00 5G, WNR320 5G, WNR340 5G
WLINK	G230, G530, G530
ZYXEL	Nebula FWA510
OTHER	4 * SMA

## PLOTS

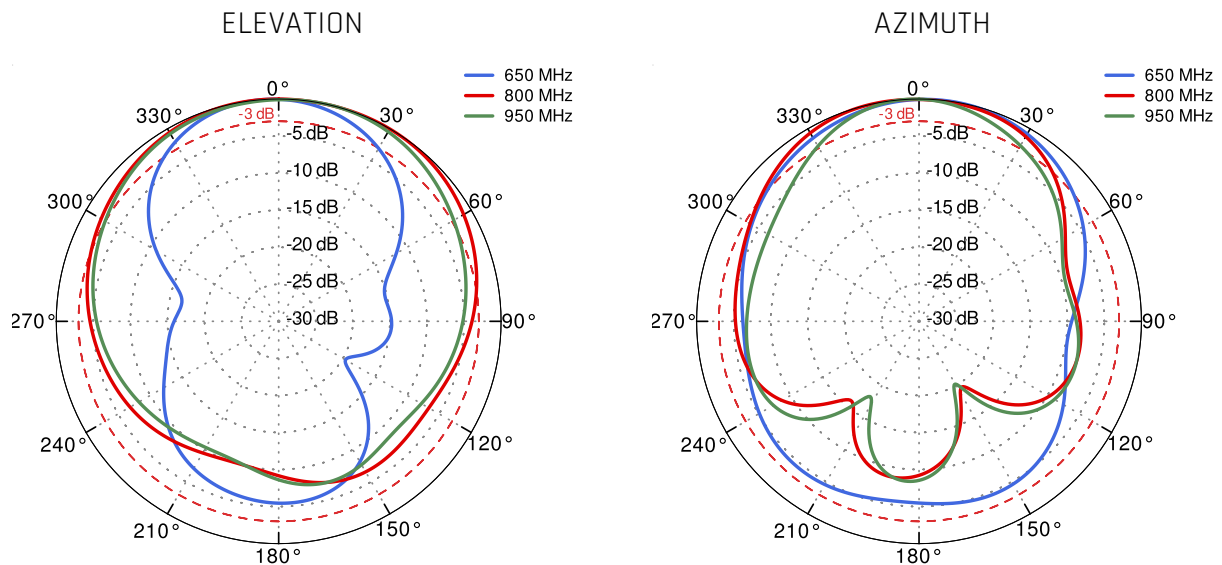
VSWR



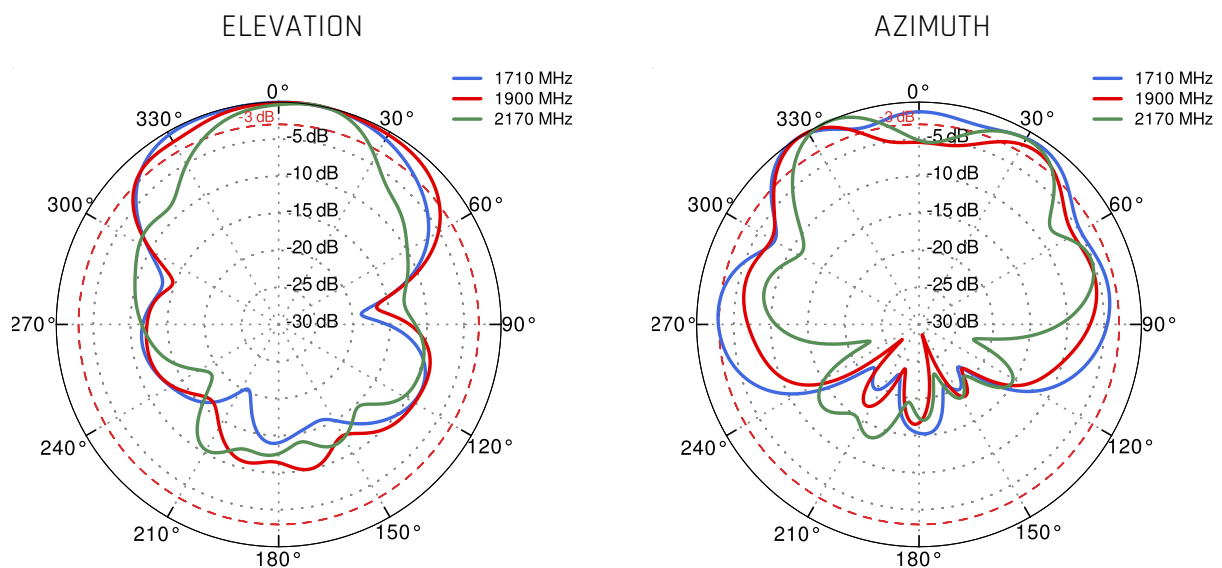
Gain



## PORT 1 - 5G/LTE from 650MHz to 950MHz



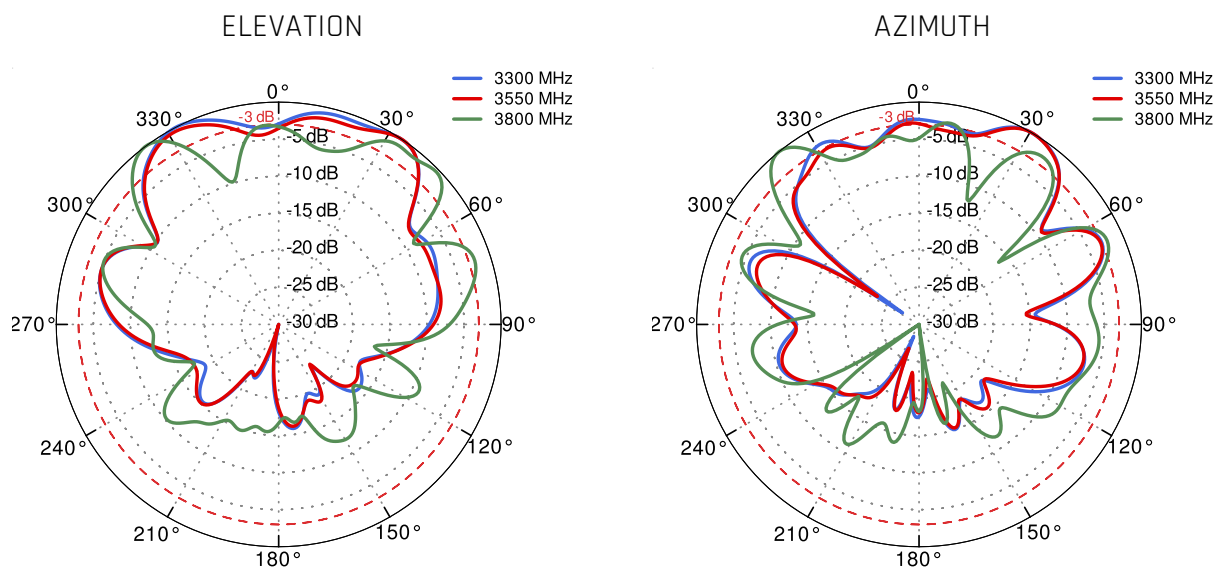
## PORT 1 - 5G/LTE from 1.71GHz to 2.17GHz



## PORT 1 - 5G/LTE from 2.3GHz to 2.7GHz



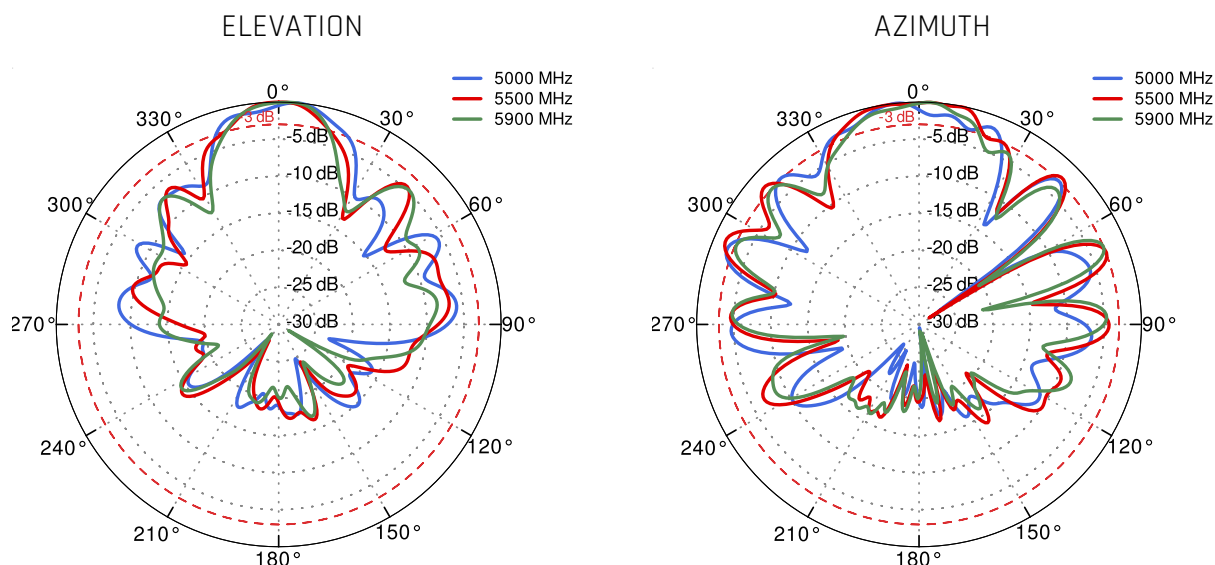
## PORT 1 - 5G/LTE from 3.3GHz to 3.8GHz



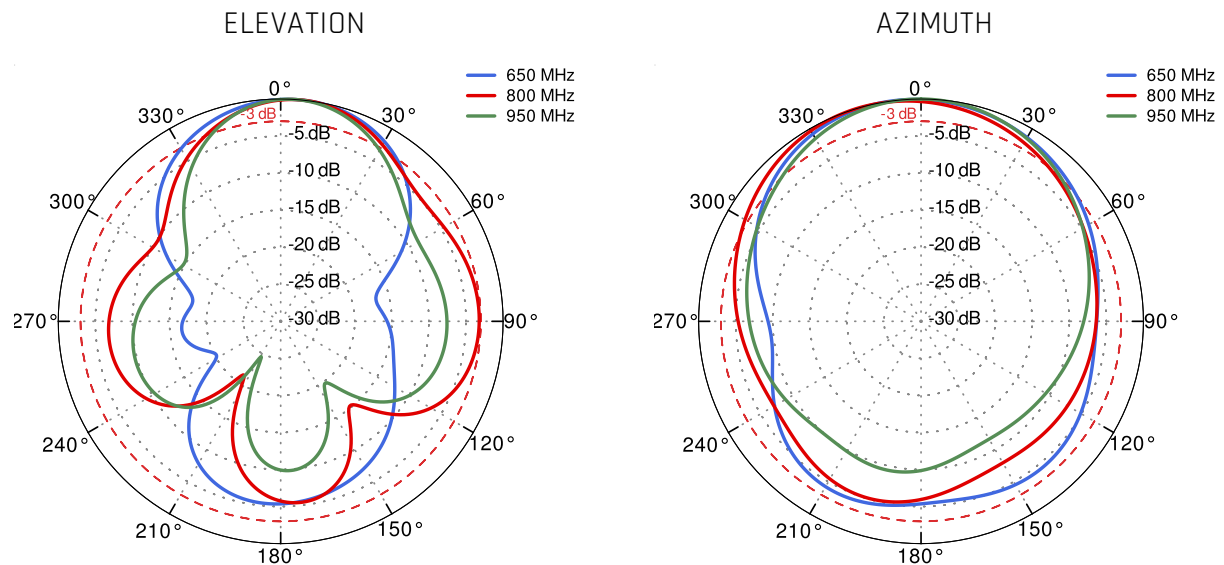
## PORT 1 - 5G/LTE from 4.2GHz to 4.6GHz



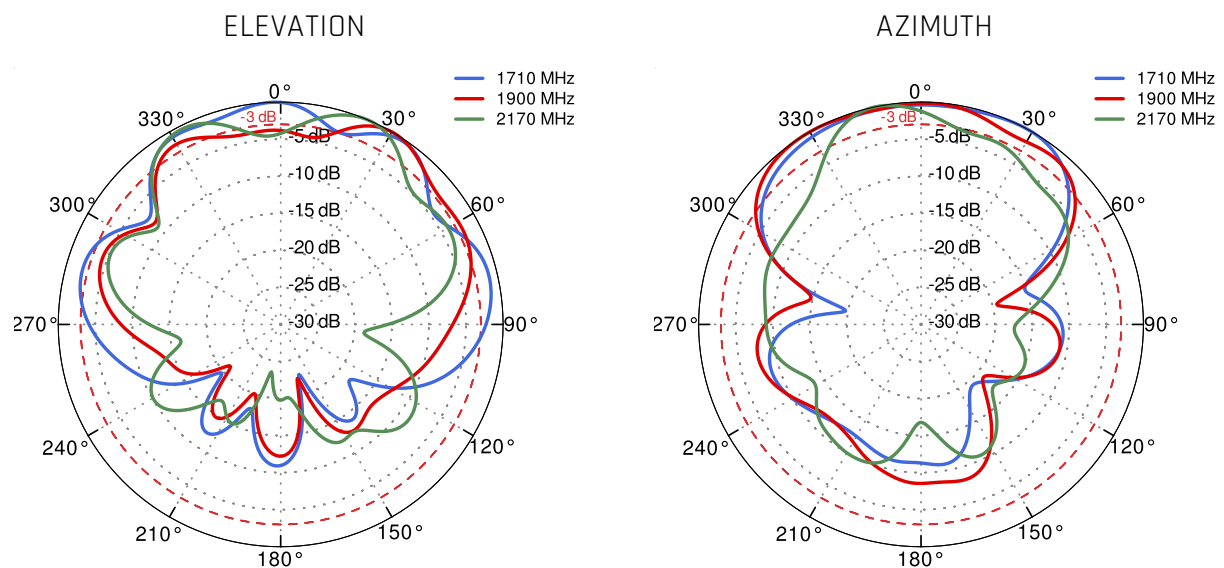
## PORT 1 - 5G/LTE from 5.0GHz to 5.9GHz



## PORT 2 - 5G/LTE from 650MHz to 950MHz



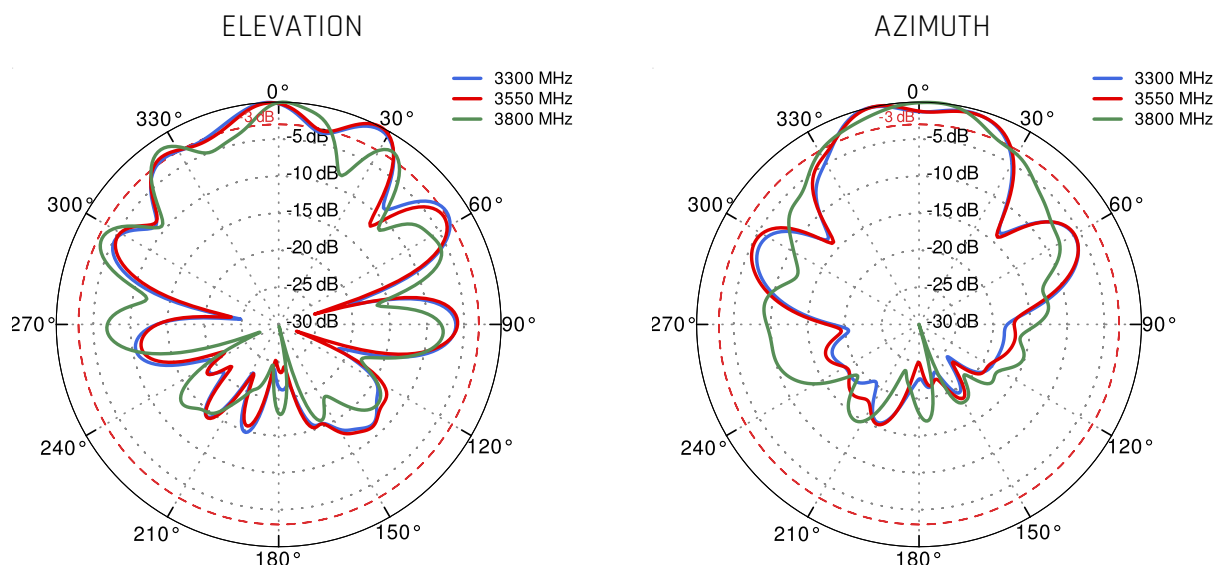
## PORT 2 - 5G/LTE from 1.71GHz to 2.17GHz



## PORT 2 - 5G/LTE from 2.3GHz to 2.7GHz



## PORT 2 - 5G/LTE from 3.3GHz to 3.8GHz

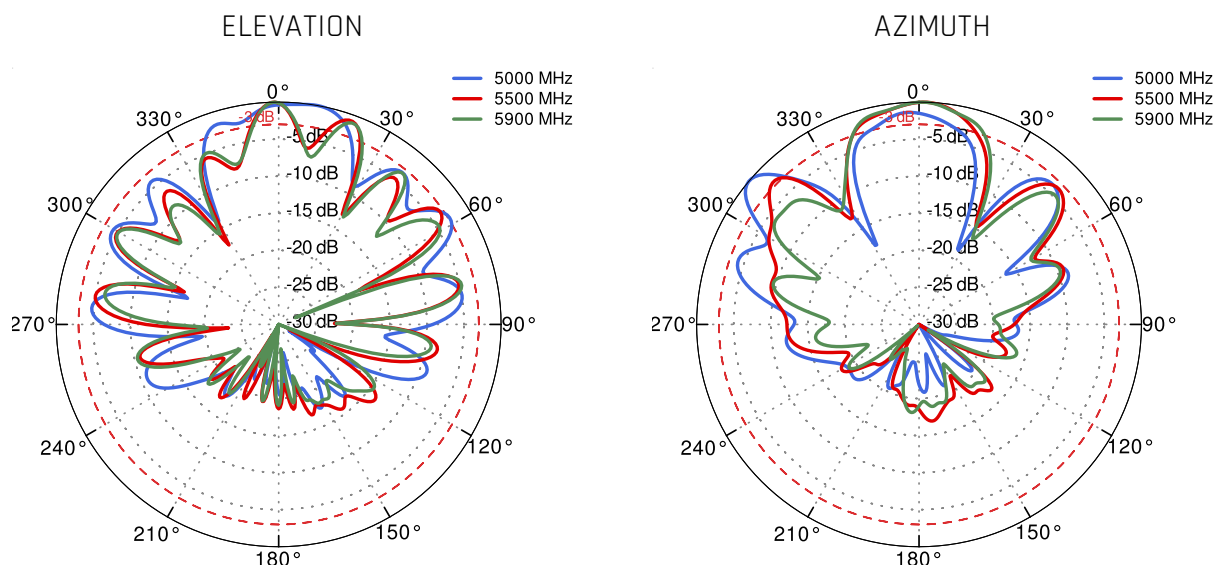




## PORT 2 - 5G/LTE from 4.2GHz to 4.6GHz



## PORT 2 - 5G/LTE from 5.0GHz to 5.9GHz





## DIMENSIONS

