

QuPoE PAS-FP - Passive PoE Splitter & Lightning arrester

QuPoE PAS-FP - passive splitter that provides full PoE and data output protection. It is compliant with the IEEE802.3 standard. The device is ideal for outdoor applications and powering gateway devices, routers, etc.

QuPoE PAS-FP splitter provides full PoE and data output protection. It has a temperature range of -40...+80C and is compliant with the **IEEE802.3 standard**. The device has lightning, surge, ESD and EFT protection and is ideal for outdoor applications and powering gateway devices, routers, etc. The GDT elements, Hight power TVS Diode and TVS Diode Array provide protection against lightning and high surge. The device has overcurrent/short protection that complies with the GR-1089, ITU K20/21. The device has 1 DC input/output 24...58VDC overcurrent/short protection 1,5A.

Important Notice:

Please note that there has been a change in our QuPoE PAS-FP on May 21, 2025. The polarity on the power socket has been reversed – the **positive (+)** and **negative (-)** terminals have been swapped. Please double-check your setup before connecting any devices to avoid damage.

Based on high-quality components ensuring long service life.



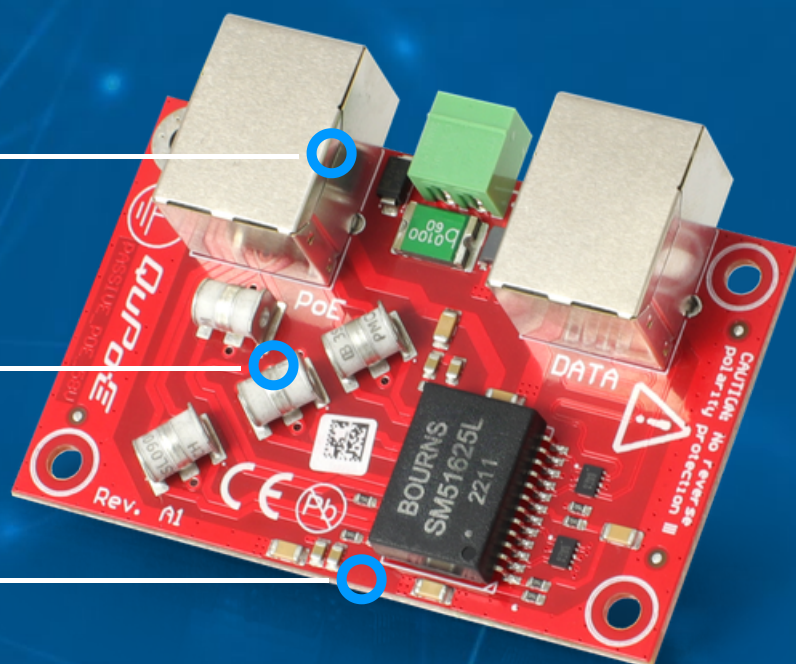
GIGABIT ETHERNET



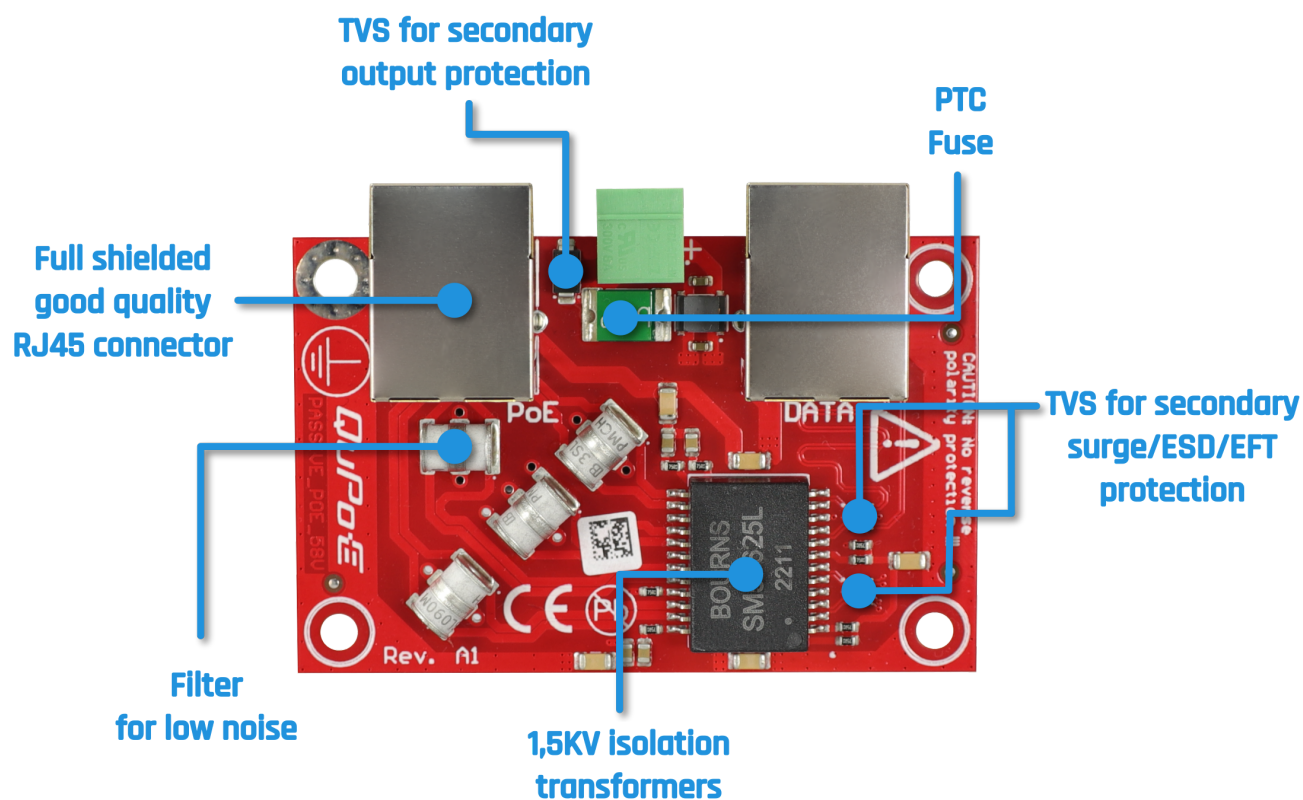
LIGHTNING/SURGE/ESD PROTECTION



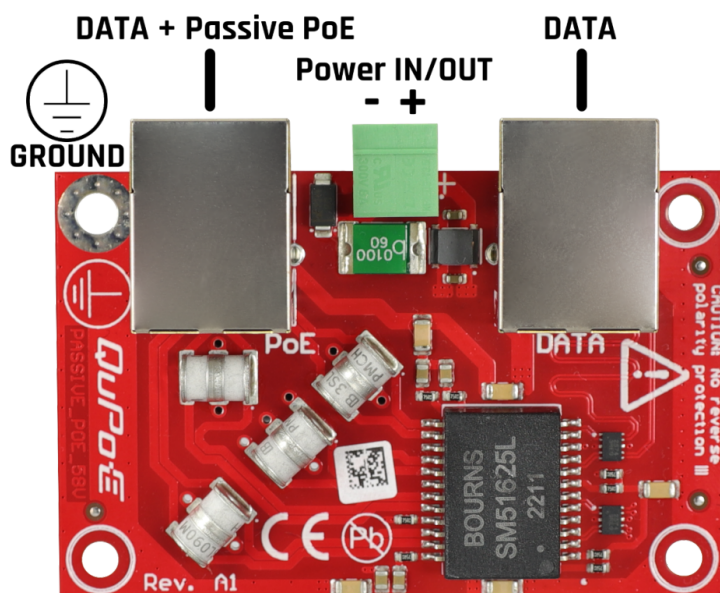
MADE IN EUROPE



SAFETY FEATURES



PORTS



POE SPECIFICATION

IEEE STANDARD

IEEE 802.3ab 1000Base-T Gigabit Ethernet

POWER SUPPLY

up to 58VDC overcurrent/short protection 1.5A

POE IN

Mode type: B

MECHANICAL SPECIFICATION

OPERATING TEMPERATURE

-40 ~ 80°C
-40 ~ 176°F

DIMENSIONS

70 x 50 x 17 mm
2.75 x 1.96 x 0.67 inch

SURGE PROTECTION

EN 61000-4-2 (ESD)

Level 4 (8kV contact, 15kV Air), Criteria B

EN 61000-4-3 (RS)

Level 3 (10V/m), Criteria A

EN 61000-4-4 (EFT)

Level 4 (4kV), Criteria A

EN 61000-4-6 (CS)

Level 3, Criteria A or extended level

EN 61000-4-5 (SURGE)

Level 5 (min 2kV), Criteria B (Telecommunication cables)
2 kA 8/20 μ s
1 kA 10/350 μ s

LIGHTING/SURGE/ESD PROTECTION REQUIREMENTS

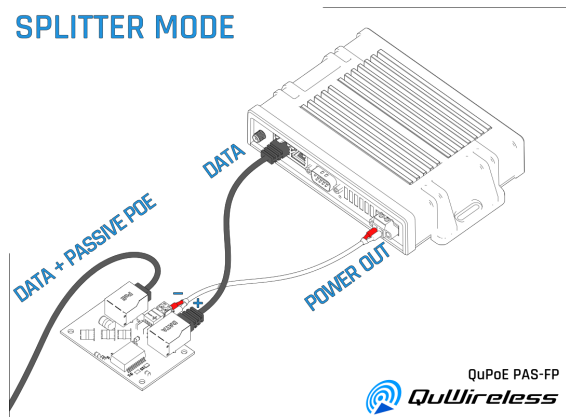
GDT elements, Hight power TVS Diode and TVS Diode Array provide protection against lighting and Hight surge.

ISOLATION REQUIREMENTS

The GDTs (Gas Discharge Tubes) are connected between the data pair and GND. A properly rated transformer provides the required isolation for IEEE 802.3 compliance.

HOW TO CONNECT

SPLITTER MODE



INJECTOR MODE

