

# QuWave for Ericsson R980 DC

**INTEGRATED MULTI-BAND 5G OMNI ANTENNA + WI-FI 6E OMNI ANTENNA + GPS ANTENNA + PLACE TO INSTALL ERICSSON R980 (ALL-IN-ONE)**

**QuWave for Ericsson R980 DC** is a perfect outdoor device for mobile and fixed installations like industrial, CCTV, hotspots, yachts, boats, campers, RV etc. It has embedded **omni 5G, omni Wi-Fi 6E and GPS antenna**. The device has two RJ45 connectors and a socket for power supply from a DC installation. If you use R980 with QuWave antenna, you get an integrated complete solution with embedded router and multi band antennas in one enclosure.

**Wi-Fi 6E support!**



OUTDOOR ANTENNA WORKS IN ANY WEATHER CONDITIONS, IP68



ANTENNA PERFECTLY MATCHED WITH THE ERICSSON R980



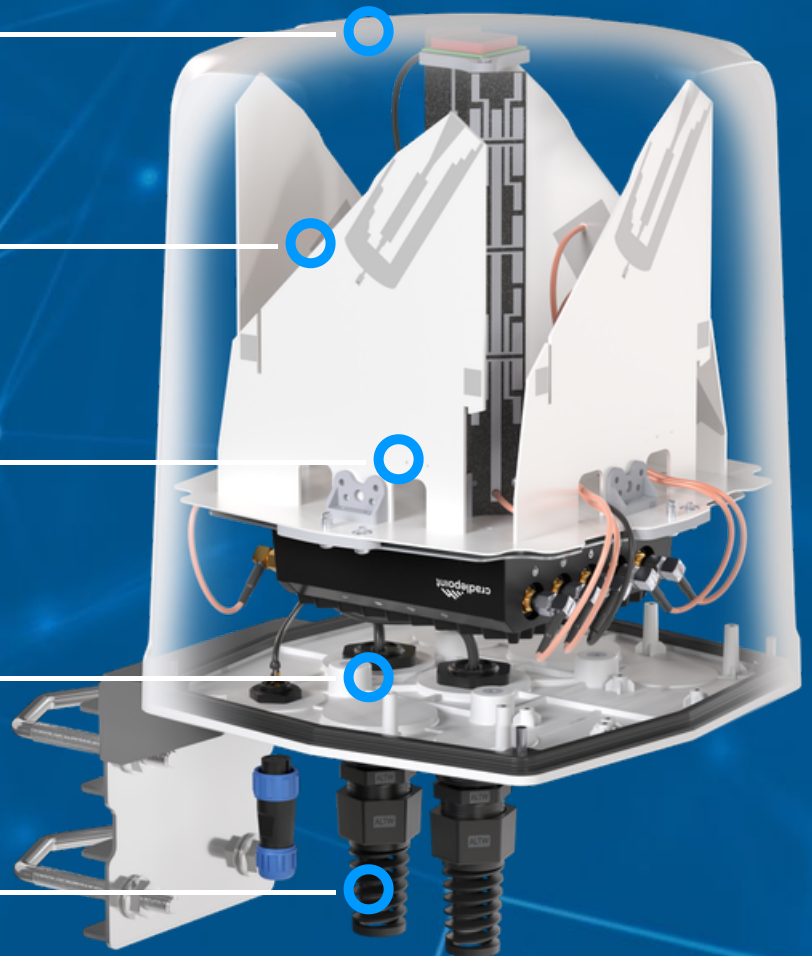
ALL ANTENNAS AND ERICSSON ROUTER INTEGRATED IN ONE ENCLOSURE



GALVANIZED STEEL, WALL OR POLE MOUNTING BRACKET



MADE IN EUROPE



## 5G / LTE ANTENNA SPECIFICATION

<b>FREQUENCY</b>	617 - 960 MHz 1.7 - 2.7 GHz 3.3 - 4.7 GHz 5.2 - 6.0 GHz
<b>GAIN</b>	617 - 960 MHz : 3 dBi 1.7 - 2.2 GHz : 4 dBi 3.3 - 4.7 GHz : 4.5 dBi 5.2 - 6.0 GHz : 2.5dBi
<b>SUPPORTED LTE BANDS</b>	1, 2, 3, 4, 5, 7, 8, 9, 10, 12, 13, 14, 17, 18, 19, 20, 22, 25, 26, 27, 28, 29, 30, 33, 34, 35, 36, 37, 38, 39, 40, 41, 42, 43, 44, 47, 48, 49, 52, 53, 65, 66, 67, 68, 69, 71, 85, 103, 106
<b>SUPPORTED 5G BANDS</b>	n1, n2, n3, n5, n7, n8, n12, n13, n14, n18, n20, n25, n26, n28, n29, n30, n34, n38, n39, n40, n41, n47, n48, n53, n65, n66, n67, n71, n77, n78, n80, n81, n82, n83, n84, n85, n86, n89, n90, n95, n97, n98, n100, n101, n256
<b>VSWR</b>	<1.80, max <2.00
<b>BEAMWIDTH</b>	360°/35° ±5°
<b>POLARIZATION</b>	Vertical
<b>IMPEDANCE</b>	50 Ω

## **WI-FI ANTENNA SPECIFICATION**

<b>FREQUENCY</b>	2.4 - 2.5 GHz 5.0 - 7.2 GHz
<b>GAIN</b>	2.4 - 2.5 GHz: 6dBi 5 GHz: 7.5dBi 7 GHz: 7.5dBi
<b>VSWR</b>	< 1.50, max < 2.00
<b>BEAMWIDTH</b>	360°/25°
<b>POLARIZATION</b>	Vertical
<b>IMPEDANCE</b>	50 $\Omega$

## **MECHANICAL SPECIFICATION**

<b>MATERIALS</b>	ABS, aluminum, PTFE
<b>CONNECTOR TYPE</b>	2x RJ45 QuPS2
<b>OUTER DIMENSIONS</b>	210 x 210 x 254 mm 8.27 x 8.27 x 10 inch
<b>INGRESS PROTECTION</b>	IP68
<b>OPERATING TEMPERATURE</b>	From -40°C to 80°C From -40°F to 176°F
<b>MAST DIAMETER</b>	25-66 mm 0.98-2.60 inch
<b>ENCLOSURE RECOMMENDED TIGHTENING TORQUE</b>	0.5 - 0.7 Nm

## FREQUENCY BANDS

LTE / 4G

	1	2	3	4	5	7	8	
	9	10	12	13	14	17	18	
	19	20	22	25	26	27	28	
617 MHz	29	30	33	34	35	36	37	6000 MHz
	38	39	40	41	42	43	44	
	47	48	49	52	53	65	66	
	67	68	69	71	85	103	106	

5G

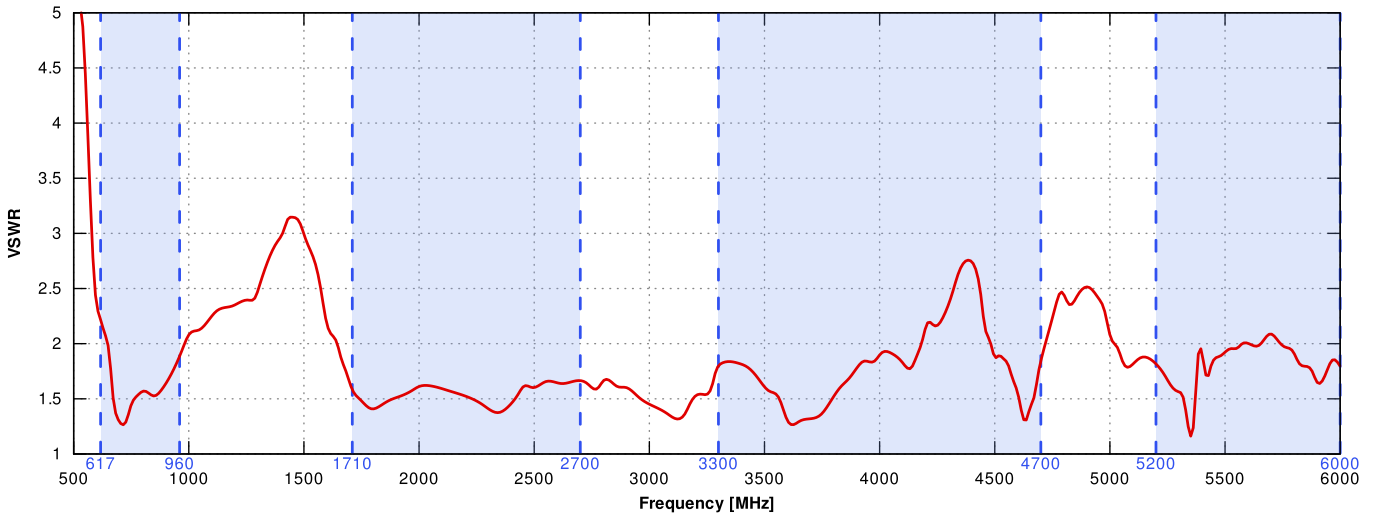
	n1	n2	n3	n5	n7	n8	n12	
	n13	n14	n18	n20	n25	n26	n28	
	n29	n30	n34	n38	n39	n40	n41	
617 MHz	n47	n48	n53	n65	n66	n67	n71	6000 MHz
	n77	n78	n80	n81	n82	n83	n84	
	n85	n86	n89	n90	n95	n97	n98	
	n100	n101	n256					

## COMPATIBLE ROUTERS

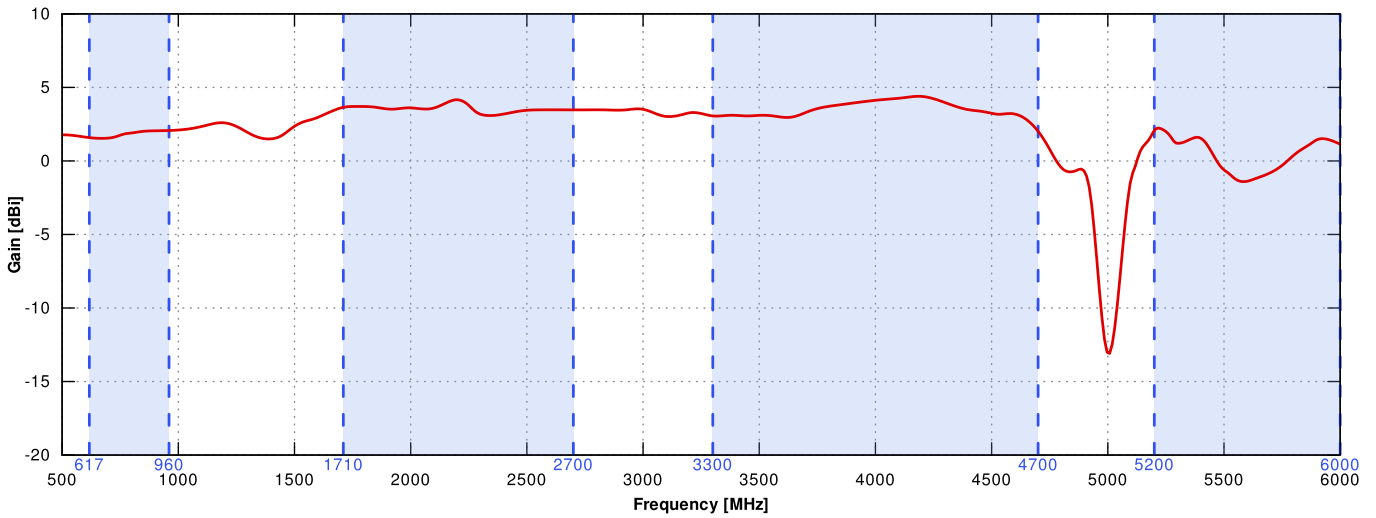
VARIANT: - \_\_\_\_\_

# PLOTS

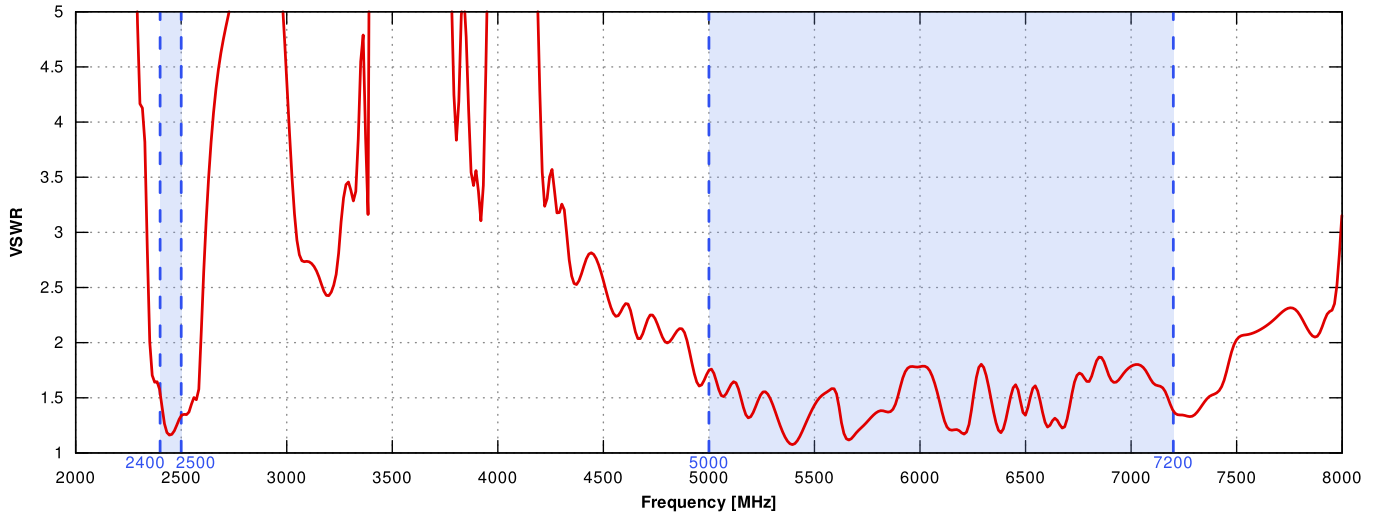
## 5G/LTE VSWR



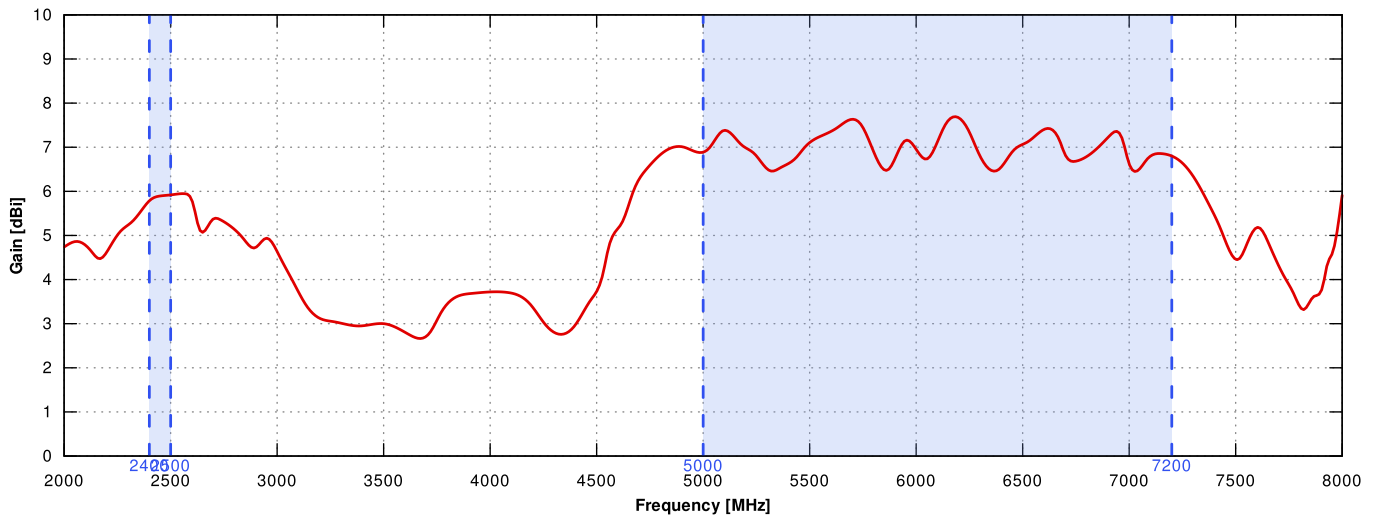
## 5G/LTE Gain



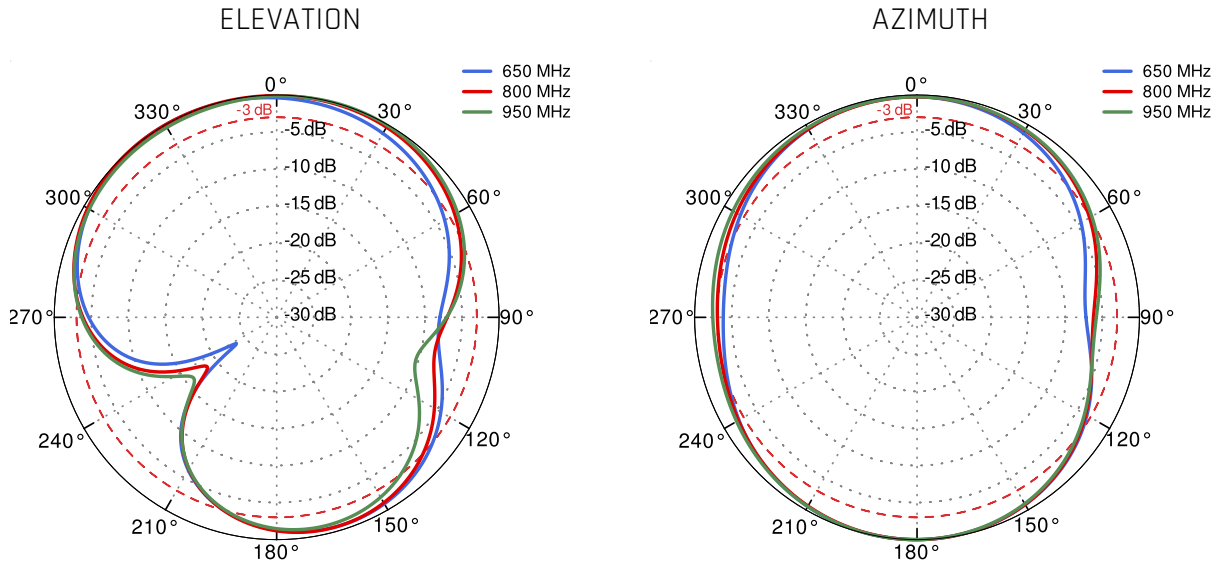
## WI-FI VSWR



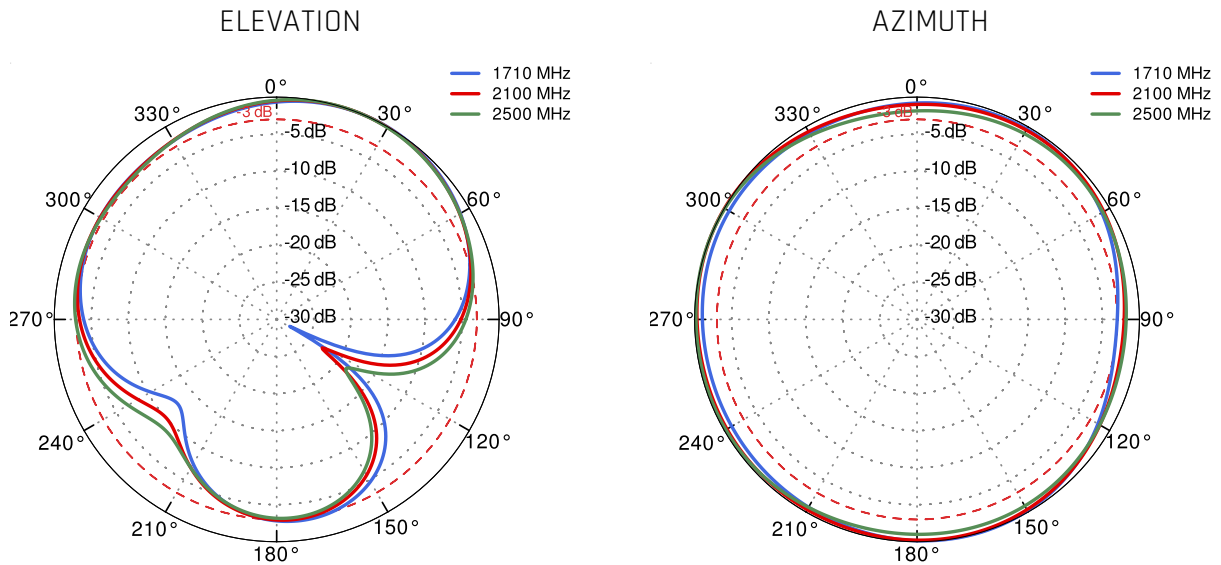
## WI-FI Gain



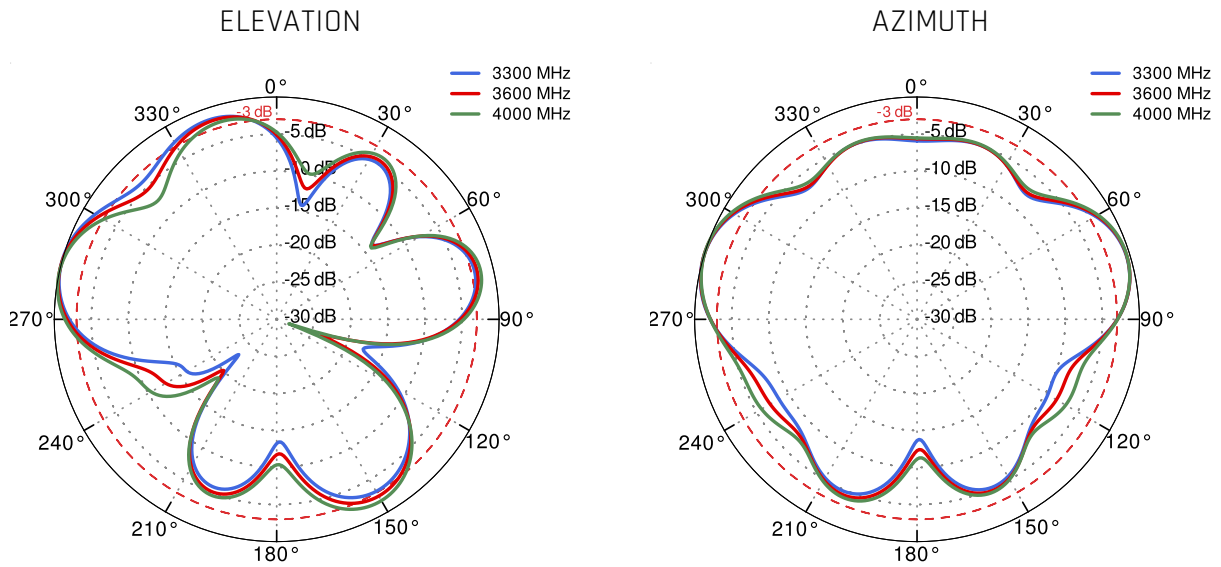
5G/LTE From 650MHz to 950MHz



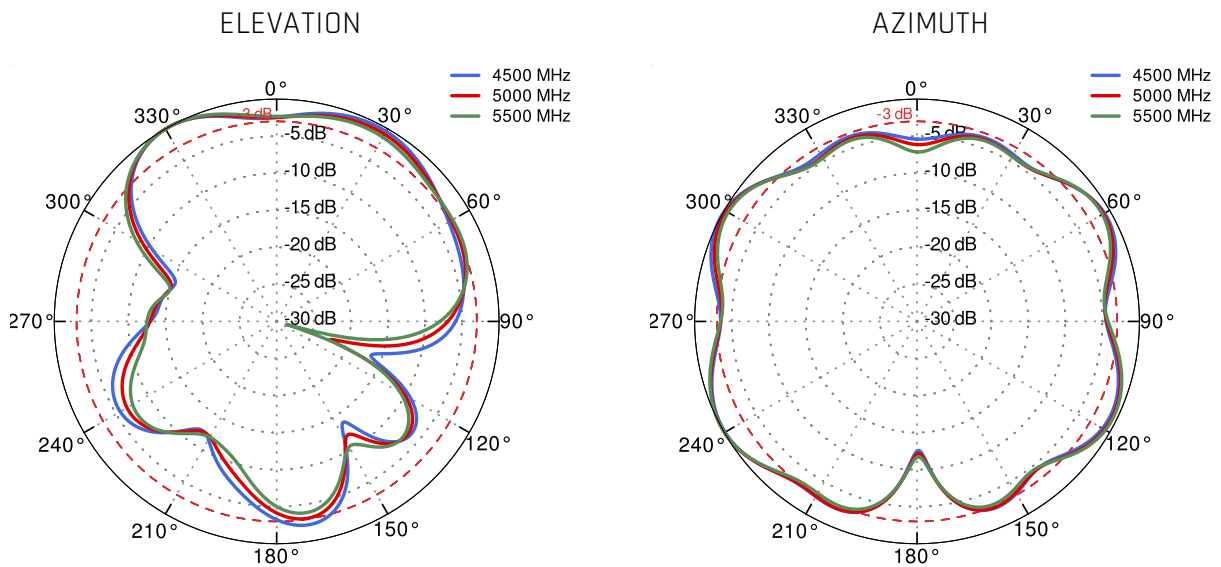
5G/LTE From 1.71GHz to 2.5GHz



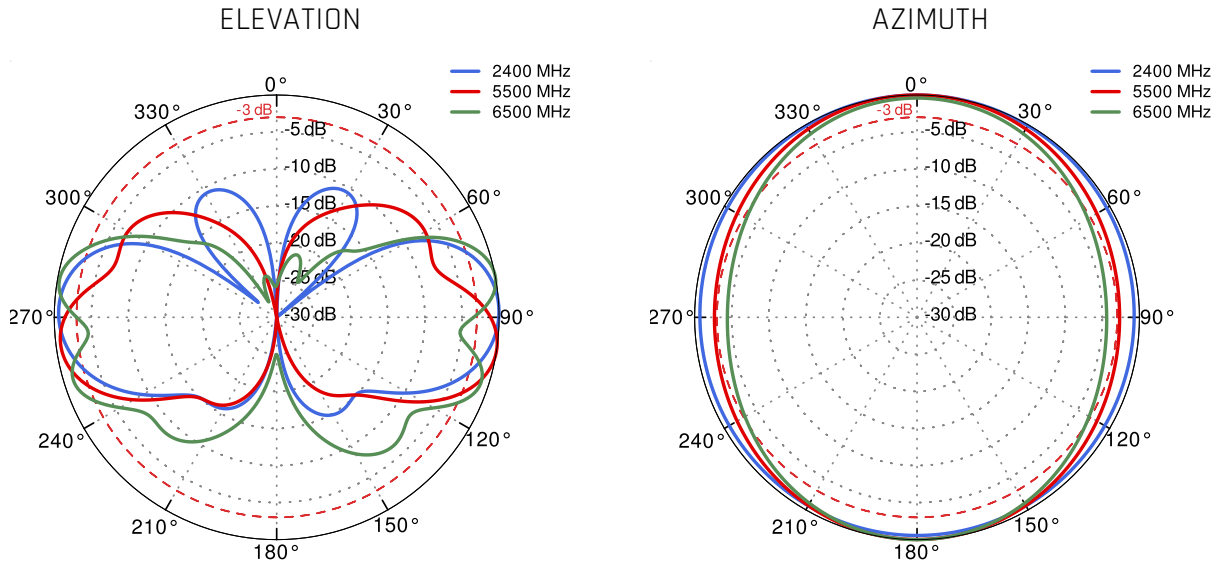
5G/LTE From 3.3GHz to 4.0GHz



5G/LTE From 4.6GHz to 5.5GHz



## Wi-Fi From 2.4 GHz to 6.5 GHz



## DIMENSIONS

