

QuWave for Ericsson

INTEGRATED MULTI-BAND LTE & 5G OMNI ANTENNA + WI-FI OMNI ANTENNA + GPS ACTIVE ANTENNA + ACTIVE POE SPLITTER + PLACE TO INSTALL ERICSSON ROUTERS (ALL-IN-ONE)

QuWave is an outdoor antenna designed to provide reliable wireless connectivity in a variety of environments. This product is an all in one solution that integrates a high gain omnidirectional 5G and Wi-Fi antennas with Ericsson routers into a single IP67 enclosure. Such integration allows implementation of new outdoor 5G solutions. QuWave for Ericsson is an ideal solution for outdoor wireless connectivity in moving applications such as transportation, yachting, boats and camping but also city centres with high signal density.

Compatible with the following Ericsson routers: R1900, R980, R920, S700

The set contains a [802.3at PoE splitter](#), allowing you to split data and power from a single Ethernet cable and maintain gigabit transfer speeds while protecting the LAN port from damage caused by overvoltage, short circuit or improper connection. Using QuWireless splitter provides 3KA surge and lightning protection.



OUTDOOR ANTENNA WORKS IN ANY WEATHER CONDITIONS, IP67



ANTENNA PERFECTLY MATCHED WITH THE ERICSSON ROUTERS



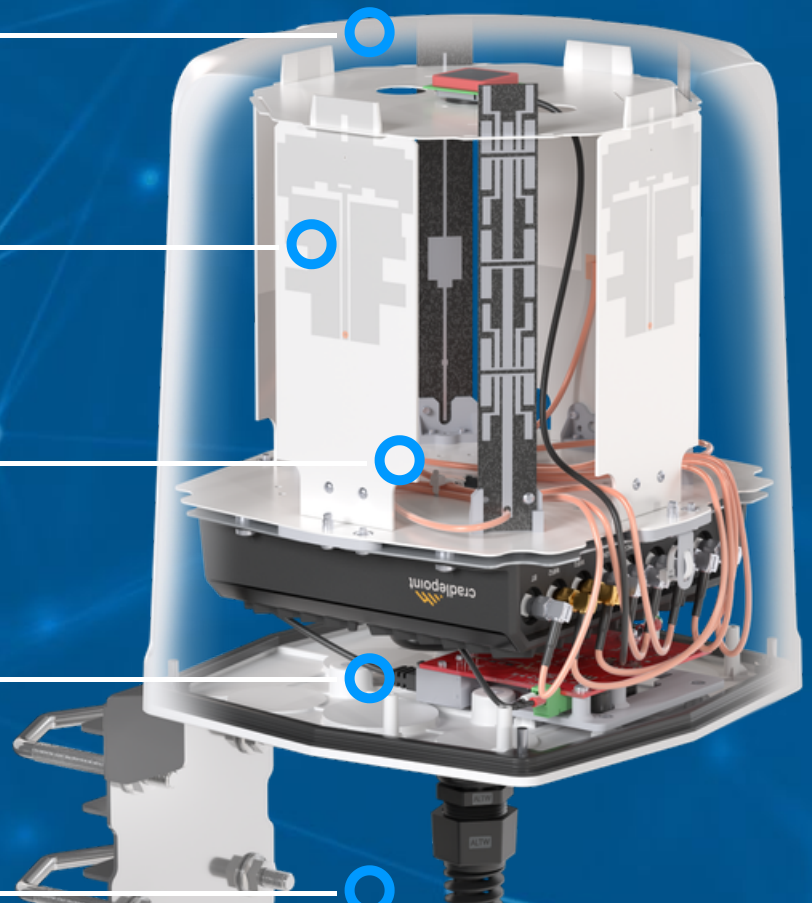
ALL ANTENNAS AND ERICSSON ROUTER INTEGRATED IN ONE ENCLOSURE



GALVANIZED STEEL, WALL OR POLE MOUNTING BRACKET



MADE IN EUROPE



5G / LTE ANTENNA SPECIFICATION

| | |
|----------------------------|--|
| FREQUENCY | 617 - 960 MHz 1.7 - 2.7 GHz 2.7 - 3.8 GHz 3.8 - 5.0 GHz 5.0 - 6.0 GHz |
| GAIN | 617 - 960 MHz: 3 dBi 1.7 - 2.7 GHz: 3.5 dBi 2.7 - 3.8 GHz: 4 dBi 3.8 - 5.0 GHz: 4.5 dBi 5.0 - 6.0 GHz: 4 dBi |
| SUPPORTED LTE BANDS | 1, 2, 3, 4, 5, 6, 7, 8, 9, 10, 11, 12, 13, 14, 17, 18, 19, 20, 21, 22, 23, 24, 25, 26, 27, 28, 29, 30, 32, 33, 34, 35, 36, 37, 38, 39, 40, 41, 42, 43, 44, 45, 46, 47, 48, 49, 50, 51, 52, 53, 54, 65, 66, 67, 68, 69, 70, 71, 74, 75, 76, 85, 103, 106, 111, 252, 253, 254, 255, 256 |
| SUPPORTED 5G BANDS | n1, n2, n3, n5, n7, n8, n12, n13, n14, n18, n20, n24, n25, n26, n28, n29, n30, n34, n38, n39, n40, n41, n46, n47, n48, n50, n51, n53, n54, n65, n66, n67, n68, n70, n71, n74, n75, n76, n77, n78, n79, n80, n81, n82, n83, n84, n85, n86, n89, n90, n91, n92, n93, n94, n95, n97, n98, n99, n100, n101, n106, n109, n110, n250, n251, n252, n253, n254, n255, n256 |
| VSWR | < 2.0, max < 2.5 |
| BEAMWIDTH | 360°/35° ±5° |
| POLARIZATION | Vertical |
| IMPEDANCE | 50 Ω |
| CONNECTOR | 4x SMA |
| CABLE TYPE | RG316 |

WI-FI ANTENNA SPECIFICATION

| | |
|---------------------|---|
| FREQUENCY | 2.4 - 2.5 GHz 5.0 - 7.2 GHz |
| GAIN | 2.4 - 2.5 GHz: 6dBi 5 GHz: 7.5dBi 7 GHz: 7.5dBi |
| VSWR | < 1.50, max < 2.00 |
| BEAMWIDTH | 360°/25° |
| POLARIZATION | Vertical |
| IMPEDANCE | 50 Ω |
| CONNECTOR | 3x RPSMA |
| CABLE TYPE | RG316 |

GPS ACTIVE ANTENNA SPECIFICATION

| | |
|--------------------------|-----------------|
| FREQUENCY | 1.56 - 1.61 GHz |
| VSWR | < 2 |
| GAIN | 3 dBi |
| GAIN 3V | 28 dBi |
| DC POWER INPUT | 2.5 V ~ 6.5 V |
| POWER CONSUMPTION | 2.5 - 6.5 mA |
| IMPEDANCE | 50 Ω |

POLARIZATION

RHCP (right hand circularly polarized)

CONNECTOR

1x SMA

CABLE TYPE

RG174

 **MECHANICAL SPECIFICATION****MATERIALS**

ABS, aluminum, PTFE

CONNECTOR TYPE

1x QuRJ45

OUTER DIMENSIONS210 x 210 x 254 mm
8.27 x 8.27 x 10 inch**INGRESS PROTECTION**

IP67

OPERATING TEMPERATUREFrom -40°C to 80°C
From -40°F to 176°F**MAST DIAMETER**25-66 mm
0.98-2.60 inch**ENCLOSURE RECOMMENDED
TIGHTENING TORQUE**

0.5 - 0.7 Nm

FREQUENCY BANDS

LTE / 4G

| | | | | | | | | |
|------------|----|----|----|----|----|-----|-----|-------------|
| | 1 | 2 | 3 | 4 | 5 | 7 | 8 | |
| | 9 | 10 | 12 | 13 | 14 | 17 | 18 | |
| | 19 | 20 | 22 | 25 | 26 | 27 | 28 | |
| 617 MHz | 29 | 30 | 33 | 34 | 35 | 36 | 37 | 6000 MHz |
| | 38 | 39 | 40 | 41 | 42 | 43 | 44 | |
| | 47 | 48 | 49 | 52 | 53 | 65 | 66 | |
| | 67 | 68 | 69 | 71 | 85 | 103 | 106 | |

5G

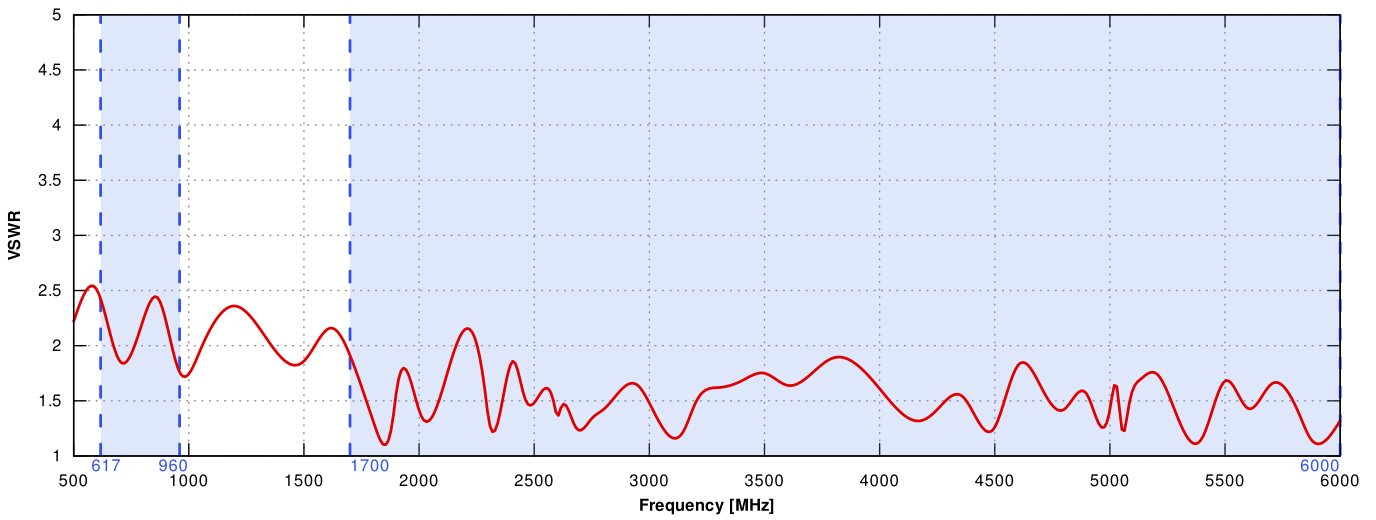
| | | | | | | | | |
|------------|------|------|------|-----|-----|-----|-----|-------------|
| | n1 | n2 | n3 | n5 | n7 | n8 | n12 | |
| | n13 | n14 | n18 | n20 | n25 | n26 | n28 | |
| | n29 | n30 | n34 | n38 | n39 | n40 | n41 | |
| 617 MHz | n47 | n48 | n53 | n65 | n66 | n67 | n71 | 6000 MHz |
| | n77 | n78 | n80 | n81 | n82 | n83 | n84 | |
| | n85 | n86 | n89 | n90 | n95 | n97 | n98 | |
| | n100 | n101 | n256 | | | | | |

COMPATIBLE ROUTERS

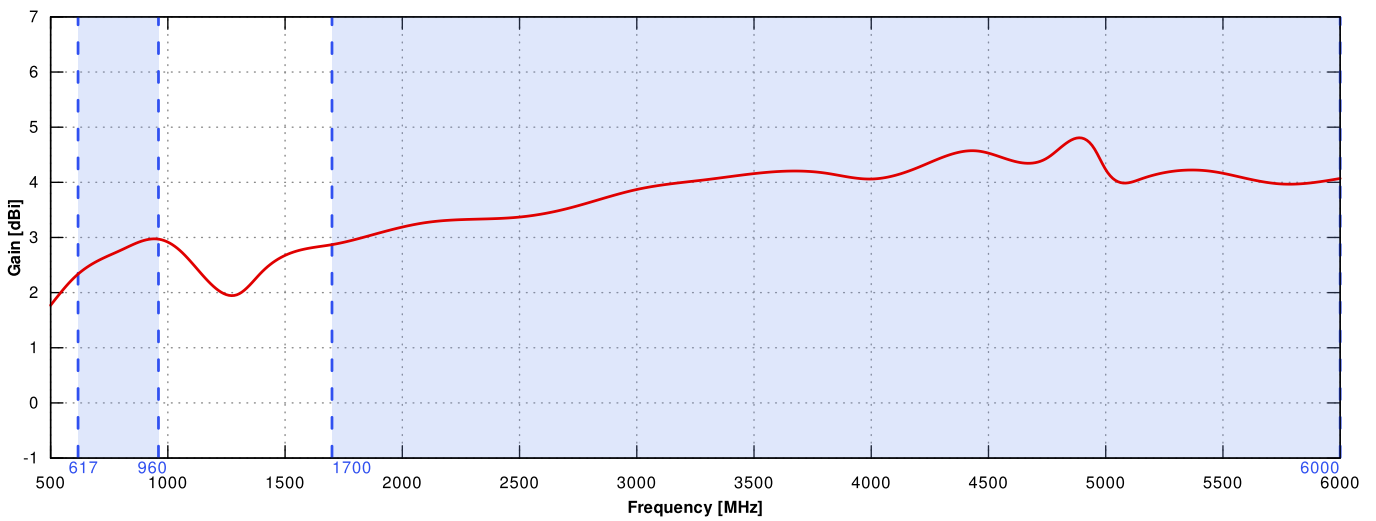
VARIANT: AEM5GGXAT

PLOTS

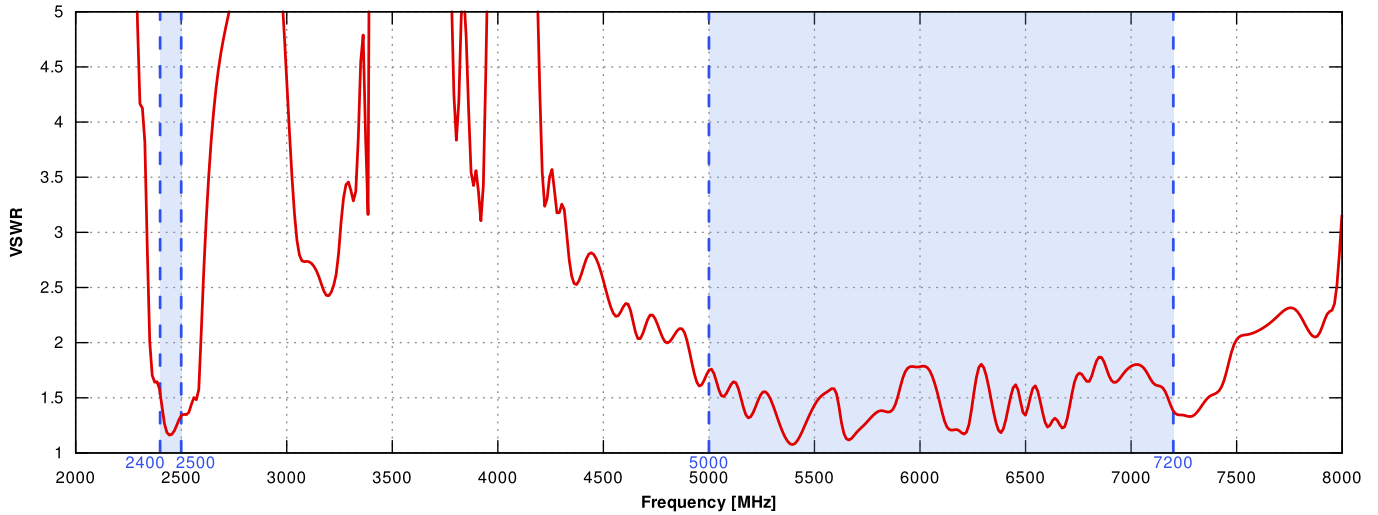
5G/LTE VSWR



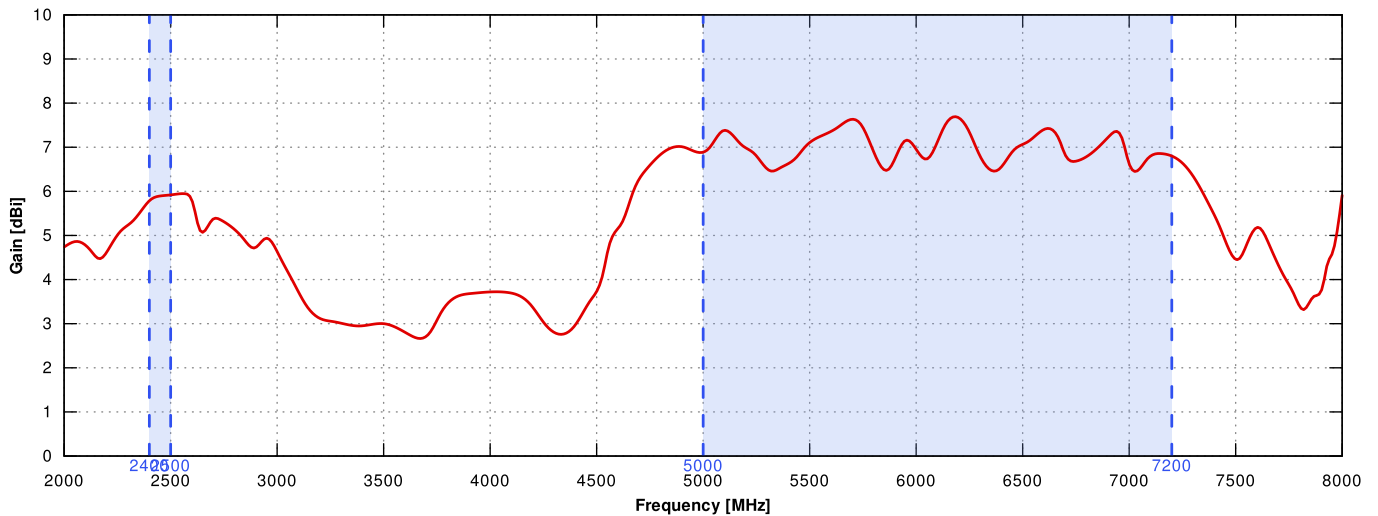
5G/LTE Gain



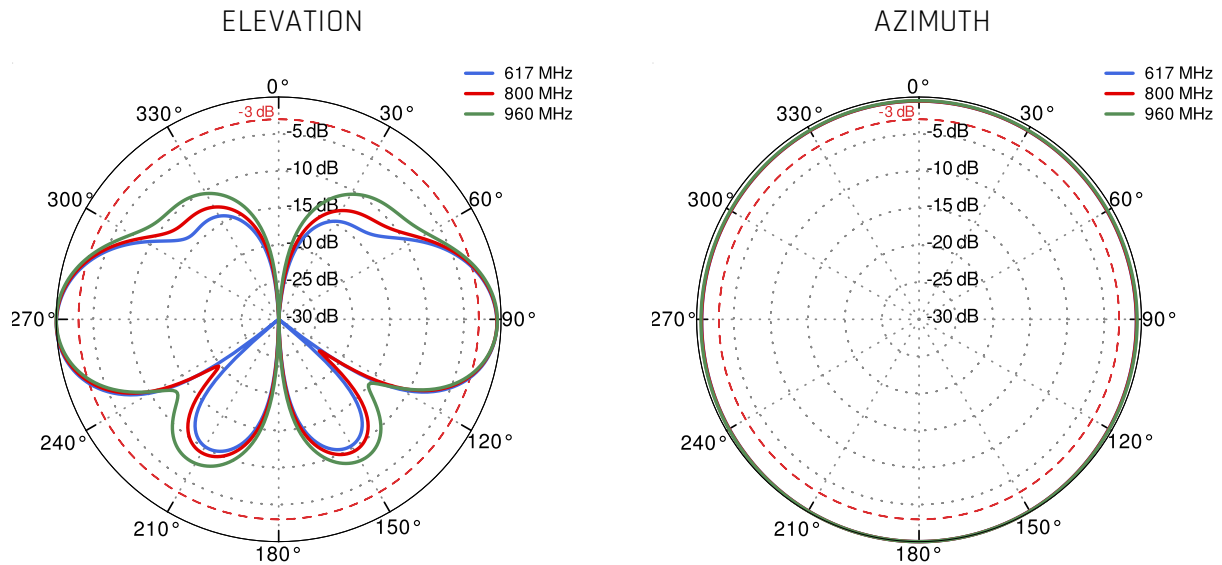
WI-FI VSWR



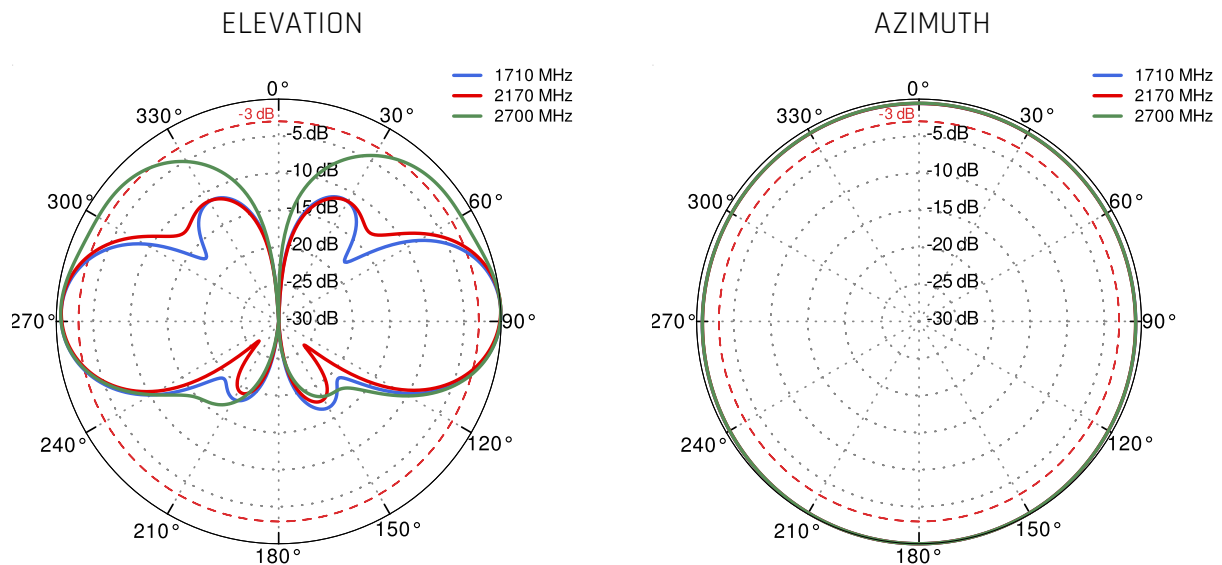
WI-FI Gain



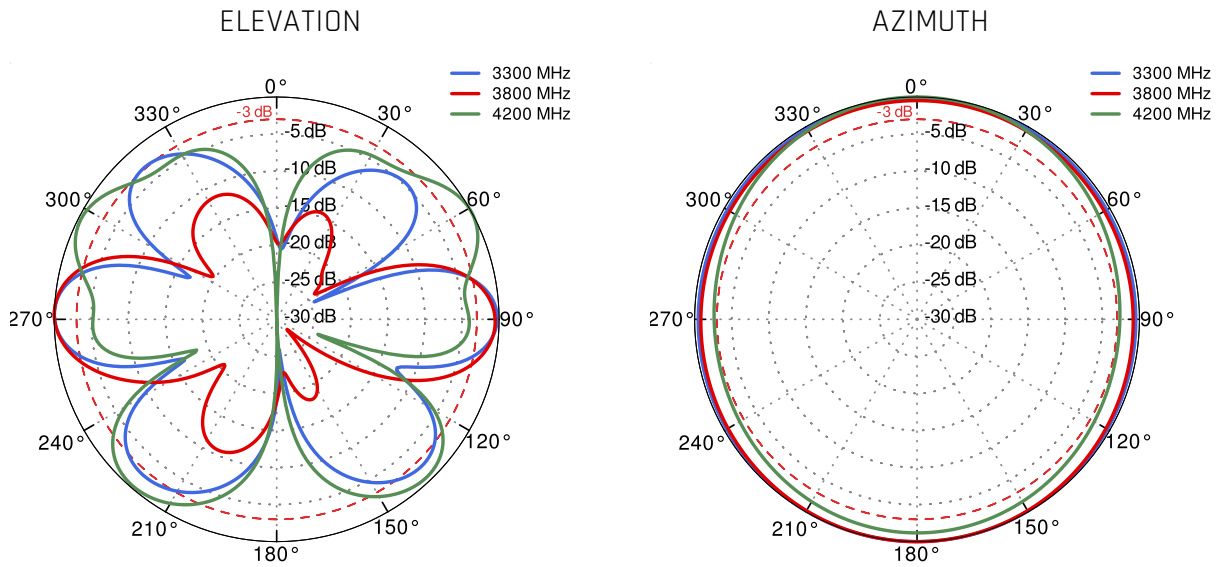
5G/LTE From 617MHz to 960MHz



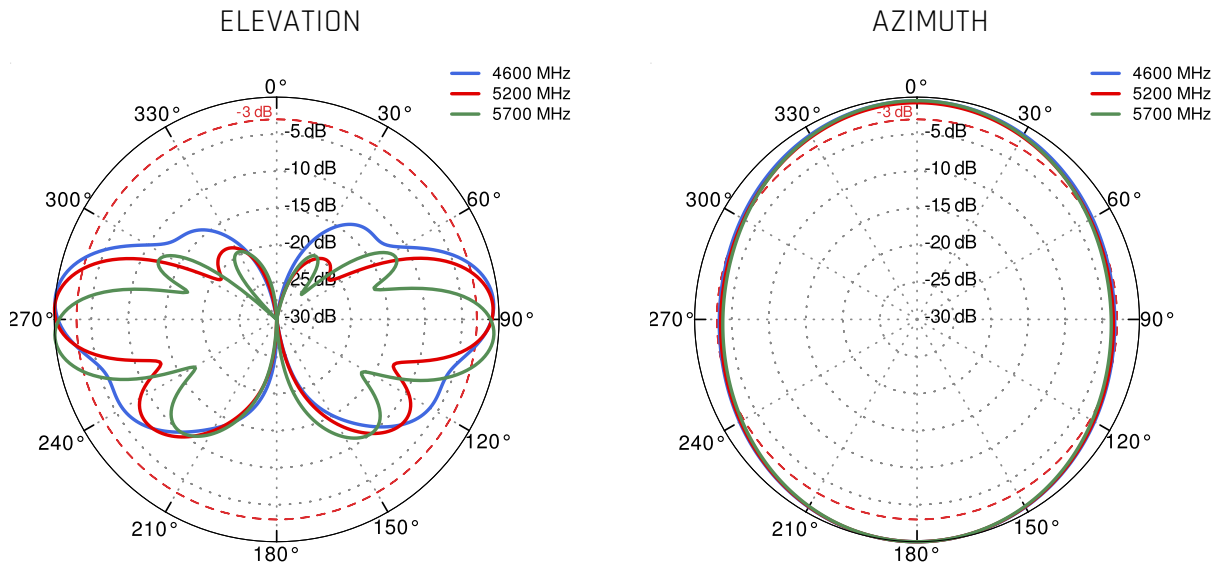
5G/LTE From 1.71GHz to 2.7GHz



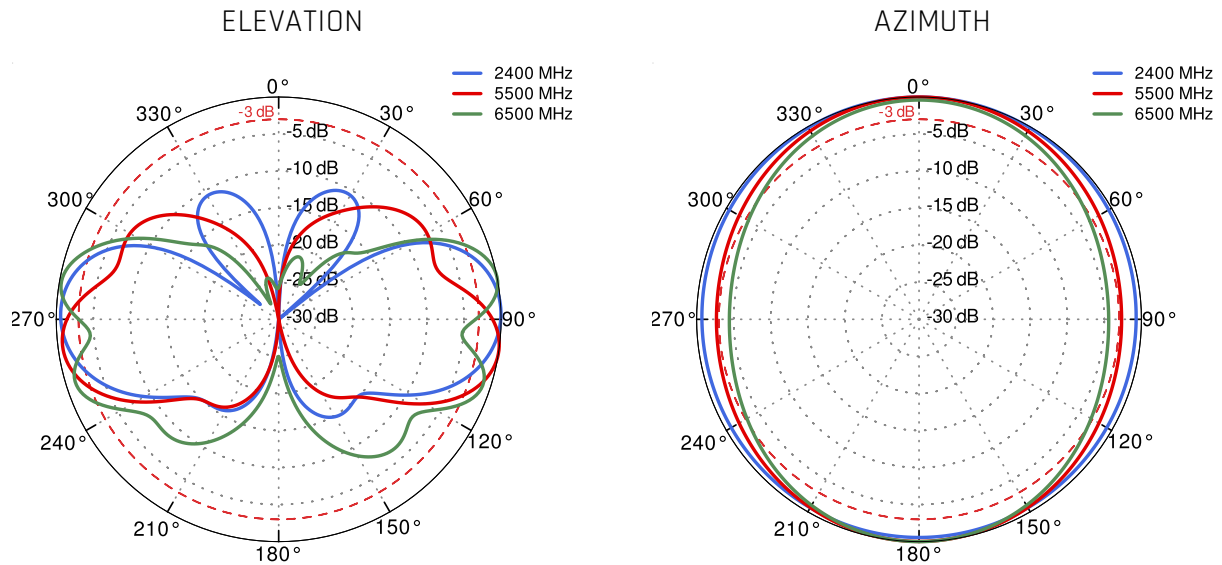
5G/LTE From 3.3GHz to 4.2GHz



5G/LTE From 4.6GHz to 5.7GHz



Wi-Fi From 2.4 GHz to 6.5 GHz



DIMENSIONS

