

QuWave for Perle IRG7440

INTEGRATED MULTI-BAND 5G OMNI ANTENNA + GPS ANTENNA + PLACE TO INSTALL PERLE IRG7440 (ALL-IN-ONE)

QuWave for Perle IRG7440 is a perfect outdoor device for mobile and fixed installations like industrial, CCTV, hotspots, yachts, boats, campers, RV etc. It has embedded **omni 5G and GPS antennas**. If you use Perle IRG7440 router with QuWave antenna, you get an integrated complete solution with embedded router and multi band antennas in one enclosure.

The set contains a [802.3at PoE splitter](#), allowing you to split data and power from a single Ethernet cable and maintain gigabit transfer speeds while protecting the LAN port from damage caused by overvoltage, short circuit or improper connection. Using QuWireless splitter provides 3KA surge and lightning protection.



OUTDOOR ANTENNA WORKS IN ANY WEATHER CONDITIONS, IP67



ANTENNA PERFECTLY MATCHED WITH THE PERLE IRG7440



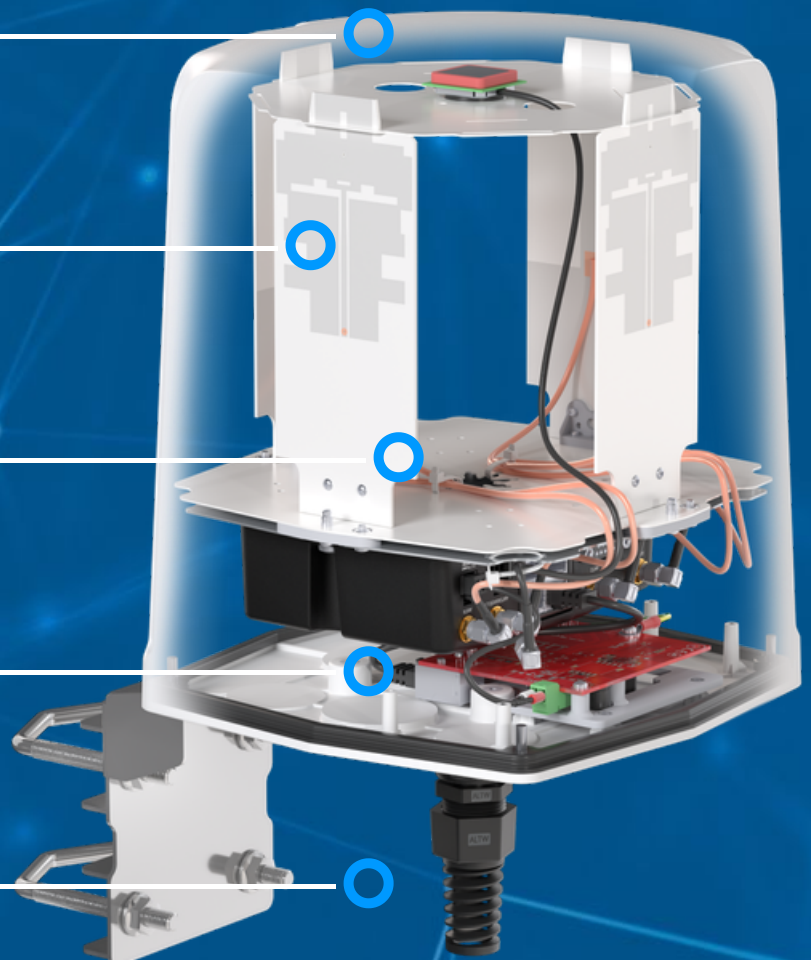
ALL ANTENNAS AND PERLE ROUTER INTEGRATED IN ONE ENCLOSURE



GALVANIZED STEEL, WALL OR POLE MOUNTING BRACKET



MADE IN EUROPE



5G / LTE ANTENNA SPECIFICATION

FREQUENCY	617 - 960 MHz 1.7 - 2.7 GHz 2.7 - 3.8 GHz 3.8 - 5.0 GHz 5.0 - 6.0 GHz
GAIN	617 - 960 MHz: 3 dBi 1.7 - 2.7 GHz: 3.5 dBi 2.7 - 3.8 GHz: 4 dBi 3.8 - 5.0 GHz: 4.5 dBi 5.0 - 6.0 GHz: 4 dBi
SUPPORTED LTE BANDS	1, 2, 3, 4, 5, 6, 7, 8, 9, 10, 11, 12, 13, 14, 17, 18, 19, 20, 21, 22, 23, 24, 25, 26, 27, 28, 29, 30, 32, 33, 34, 35, 36, 37, 38, 39, 40, 41, 42, 43, 44, 45, 46, 47, 48, 49, 50, 51, 52, 53, 54, 65, 66, 67, 68, 69, 70, 71, 74, 75, 76, 85, 103, 106, 111, 252, 253, 254, 255, 256
SUPPORTED 5G BANDS	n1, n2, n3, n5, n7, n8, n12, n13, n14, n18, n20, n24, n25, n26, n28, n29, n30, n34, n38, n39, n40, n41, n46, n47, n48, n50, n51, n53, n54, n65, n66, n67, n68, n70, n71, n74, n75, n76, n77, n78, n79, n80, n81, n82, n83, n84, n85, n86, n89, n90, n91, n92, n93, n94, n95, n97, n98, n99, n100, n101, n106, n109, n110, n250, n251, n252, n253, n254, n255, n256
VSWR	< 2.0, max < 2.5
BEAMWIDTH	360°/35° ±5°
POLARIZATION	Vertical
IMPEDANCE	50 Ω
CONNECTOR	4x SMA
CABLE TYPE	RG316

MECHANICAL SPECIFICATION

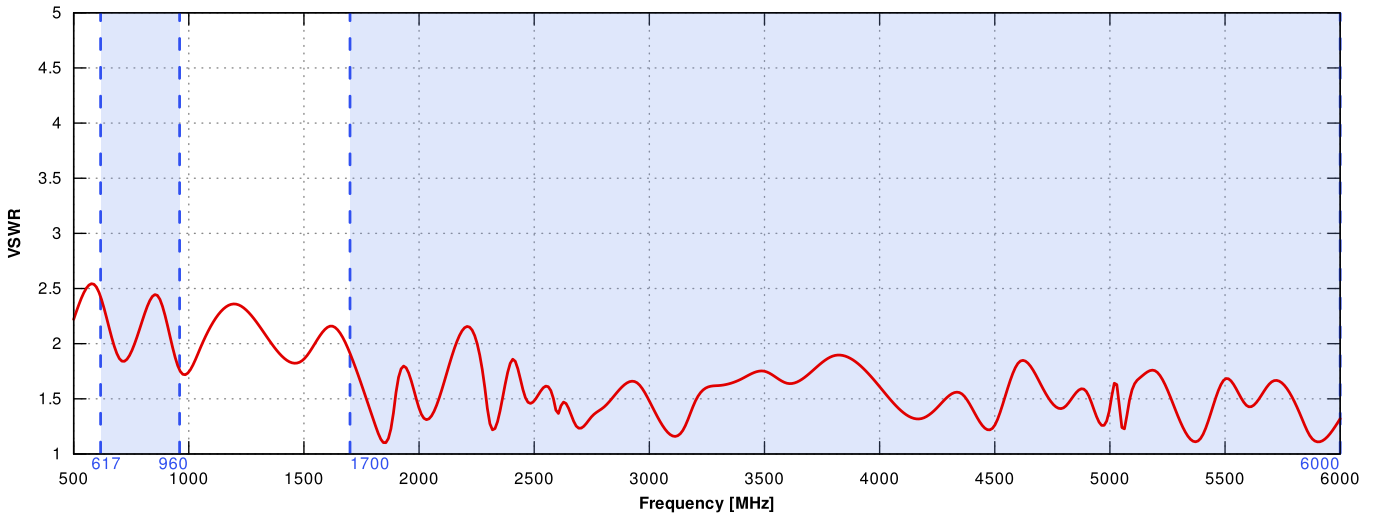
MATERIALS	ABS, aluminum, PTFE
CONNECTOR TYPE	1x QuRJ45
OUTER DIMENSIONS	210 x 210 x 254 mm 8.27 x 8.27 x 10 inch
INGRESS PROTECTION	IP67
OPERATING TEMPERATURE	From -40°C to 80°C From -40°F to 176°F
MAST DIAMETER	25-66 mm 0.98-2.60 inch
ENCLOSURE RECOMMENDED TIGHTENING TORQUE	0.5 - 0.7 Nm

COMPATIBLE ROUTERS

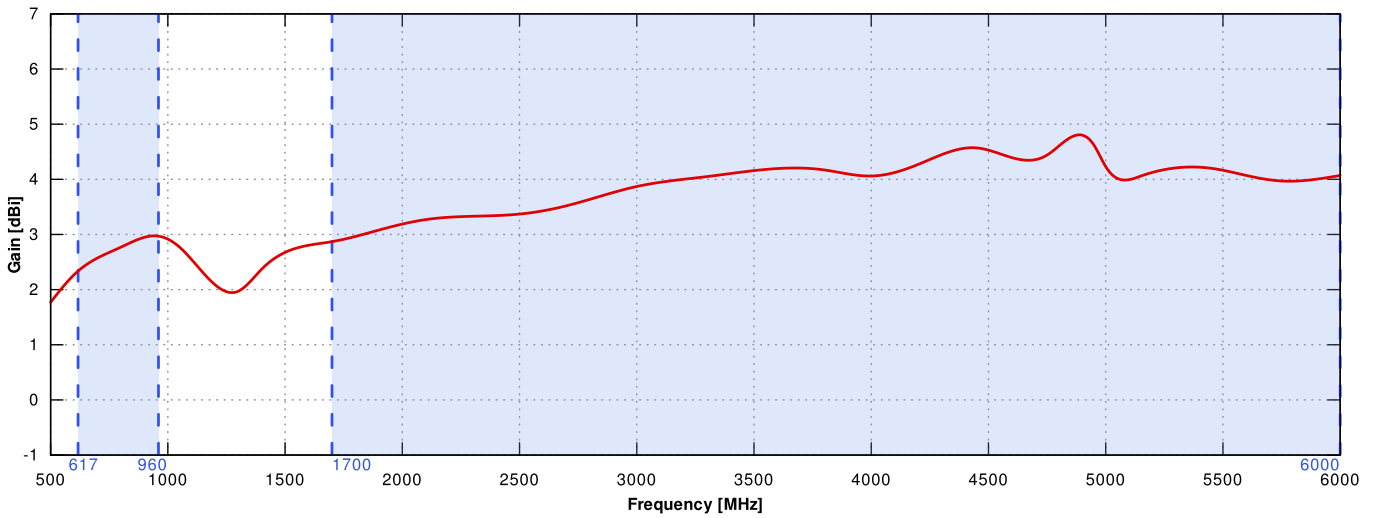
VARIANT: APE7440W _____

PLOTS

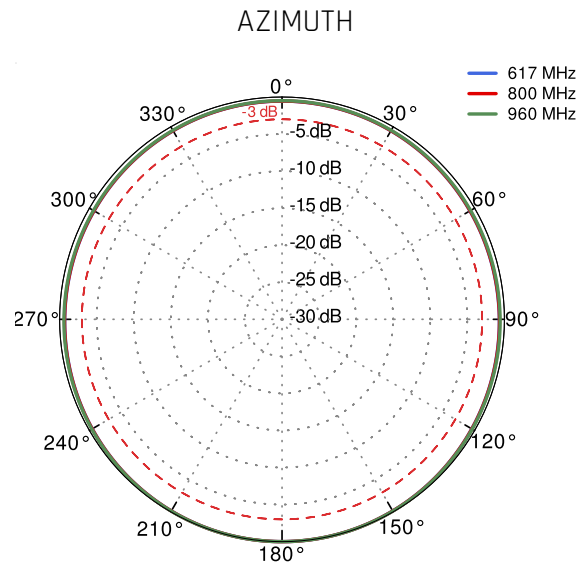
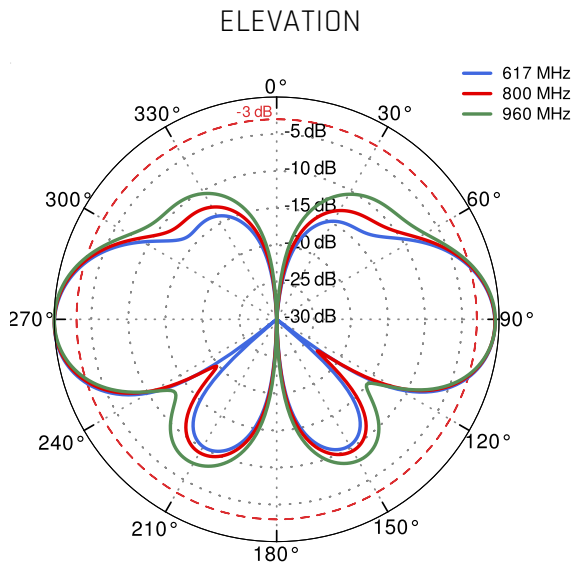
5G/LTE VSWR



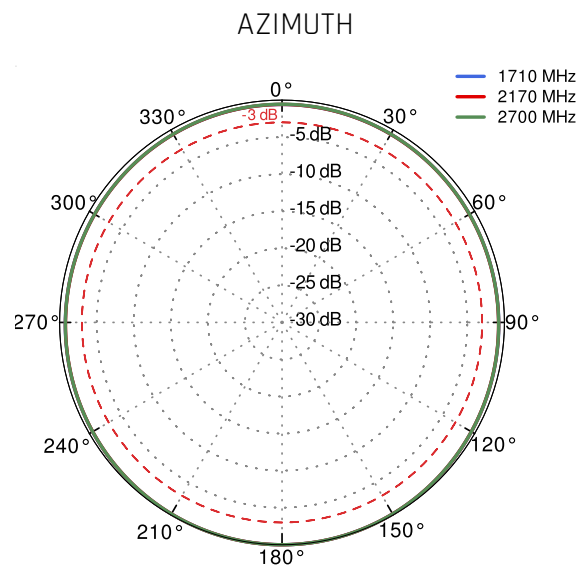
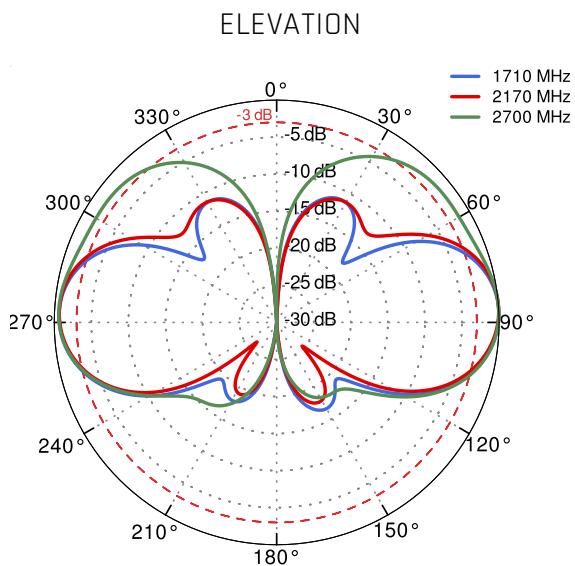
5G/LTE Gain



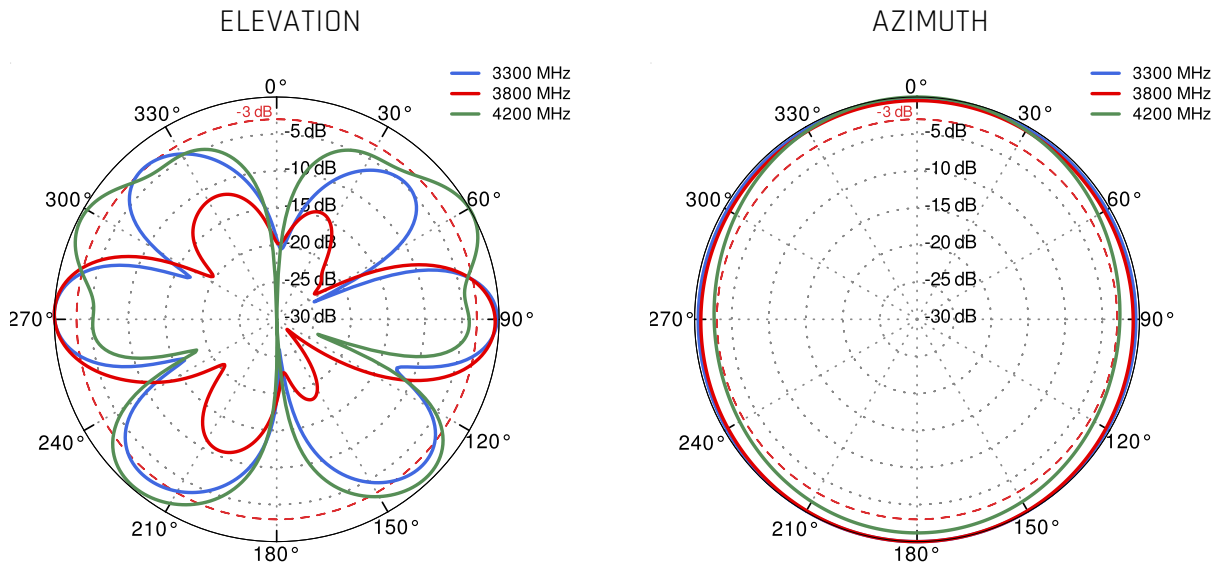
5G/LTE From 617MHz to 960MHz



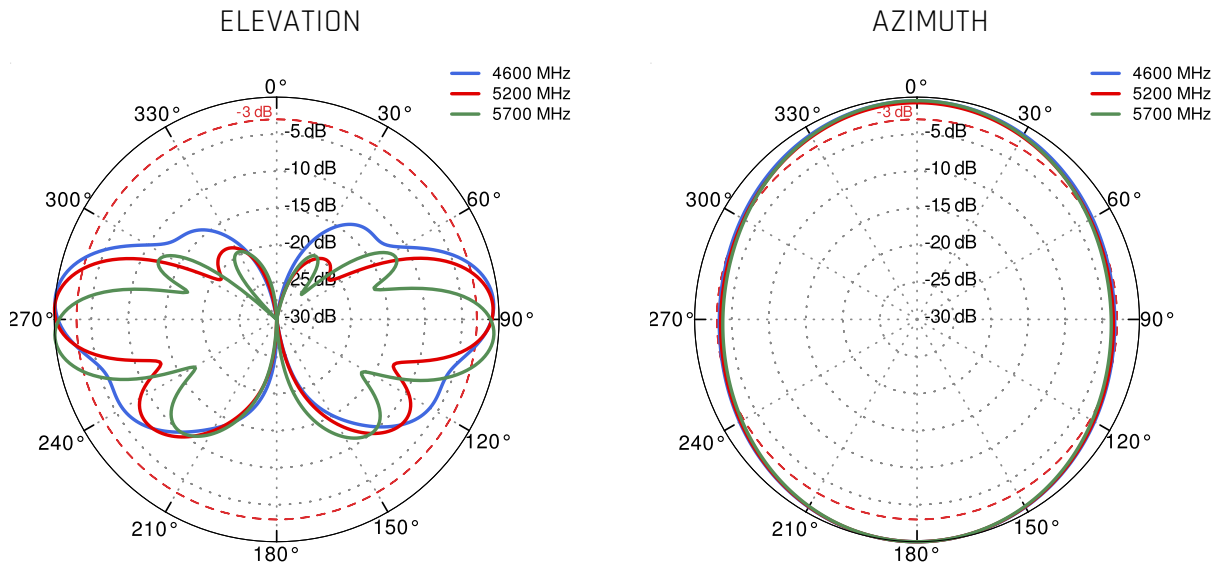
5G/LTE From 1.71GHz to 2.5GHz



5G/LTE From 3.3GHz to 4.2GHz



5G/LTE From 4.6GHz to 5.7GHz



DIMENSIONS

